

# 42DW

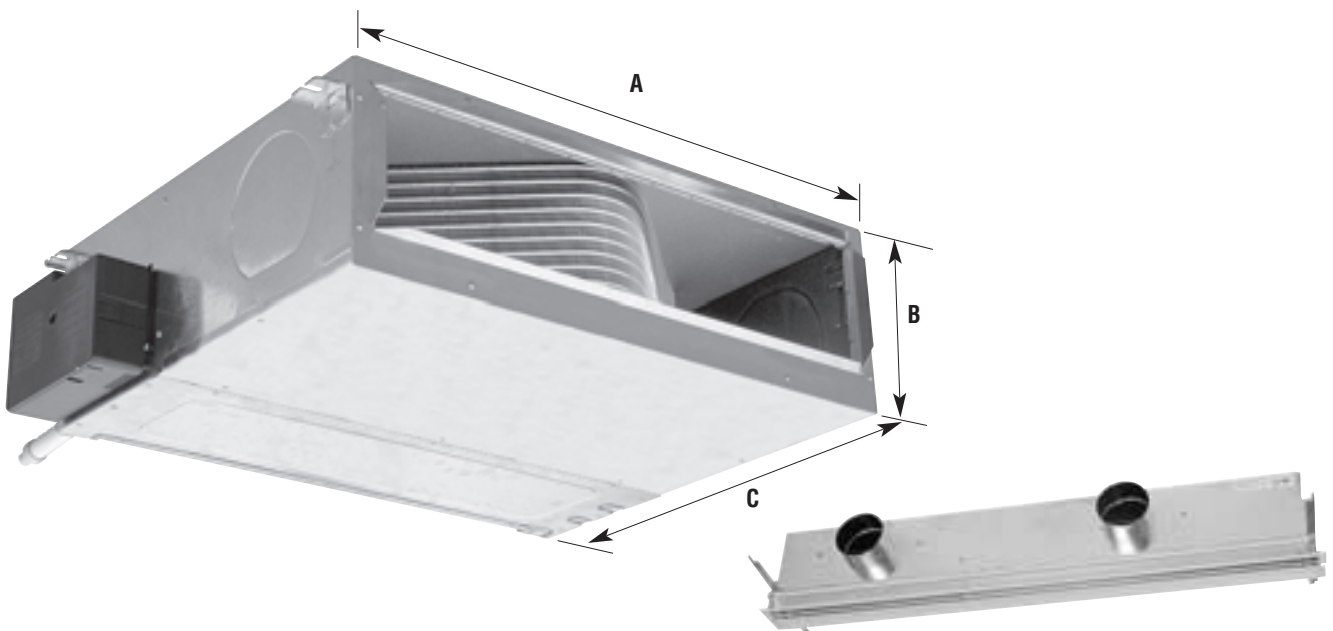
## HORIZONTAL DUCTED FAN COIL UNITS

Unit size	42DWC 07			42DWC 09			42DWC 12			42DWC 16			42DWD 09			42DWD 16			
	Low	Medium	High	Low	Medium	High	Low	Medium	High	Low	Medium	High	Low	Medium	High	Low	Medium	High	
Fan speed																			
Fan																			
Air flow	l/s	228	250	260	253	303	349	478	562	632	601	655	692	301	368	433	658	738	805
	m <sup>3</sup> /h	820	900	935	910	1090	1256	1719	2024	2276	2162	2359	2491	1083	1323	1560	2369	2655	2899
Static pressure	Pa	40	50	55	35	50	65	35	50	60	40	50	55	0	0	0	0	0	0
Cooling mode																			
Total cooling capacity*	kW	5.08	5.5	5.67	5.88	6.81	7.69	9.29	10.36	11.15	12.44	13.39	13.65	6.34	7.33	8.19	11.32	12.12	12.64
Sensible cooling capacity*	kW	4	4.33	4.47	4.54	5.32	6.05	7.53	8.52	9.28	10	10.59	10.72	4.92	5.79	6.55	9.38	10.16	10.69
Water flow rate	l/s	0.24	0.26	0.27	0.28	0.33	0.38	0.45	0.51	0.54	0.59	0.64	0.67	0.31	0.35	0.40	0.56	0.60	0.63
	l/h	870	940	980	1020	1170	1355	1630	1825	1950	2135	2305	2425	1110	1275	1425	2010	2150	2250
Water pressure drop	kPa	16	21.1	23.2	16.1	21.5	27.5	38	45	55	48.3	56.1	58.4	26	32	39	48	54	58
2-pipe heating mode																			
Heating capacity*	kW	6.74	7.28	7.6	7.95	9.31	10.5	13.09	14.8	16.26	17.35	18.71	19.76	-	-	-	-	-	-
4-pipe heating mode																			
Heating capacity*	kW	-	-	-	-	-	-	-	-	-	-	-	-	8.24	9.3	10.15	15.35	16.41	17.28
Water flow rate	l/h	-	-	-	-	-	-	-	-	-	-	-	-	0.19	0.22	0.24	0.35	0.38	0.40
	l/h	-	-	-	-	-	-	-	-	-	-	-	-	700	775	850	1265	1370	1440
Water pressure drop	kPa	-	-	-	-	-	-	-	-	-	-	-	-	15	17	21	45	51	56
Electric heater capacity	W	3000			3000			3000			3000			3000			3000		
Sound levels																			
Sound power level	dBA	51	53	54	52	56	60	57	61	63	63	65	67	53	58	63	69	71	73
Sound pressure level**	dBA	33	35	36	34	38	42	39	43	45	45	47	49	35	40	45	51	58	55
NR value***		28	30	31	29	33	37	34	38	40	40	42	44	30	35	40	46	48	50
Electrical data																			
Power supply	V-ph-Hz	230-1-50			230-1-50			230-1-50			230-1-50			230-1-50			230-1-50		
Power input	W	85	95	105	125	165	195	265	310	360	370	410	450	135	175	220	400	460	510
Current draw	A	0.37	0.41	0.45	0.55	0.71	0.85	1.16	1.37	1.57	1.63	1.76	1.94	0.58	0.76	0.95	1.82	2.04	2.24
Dimensions																			
Coil outlet/inlet diameter	inch	3/4			3/4			3/4			3/4			3/4			3/4		
Length A	mm	925			925			1325			1325			925			1325		
Height B	mm	285			285			285			285			285			285		
Depth C	mm	750			750			750			750			750			750		
Weight	kg	35			37			48			53			37			53		

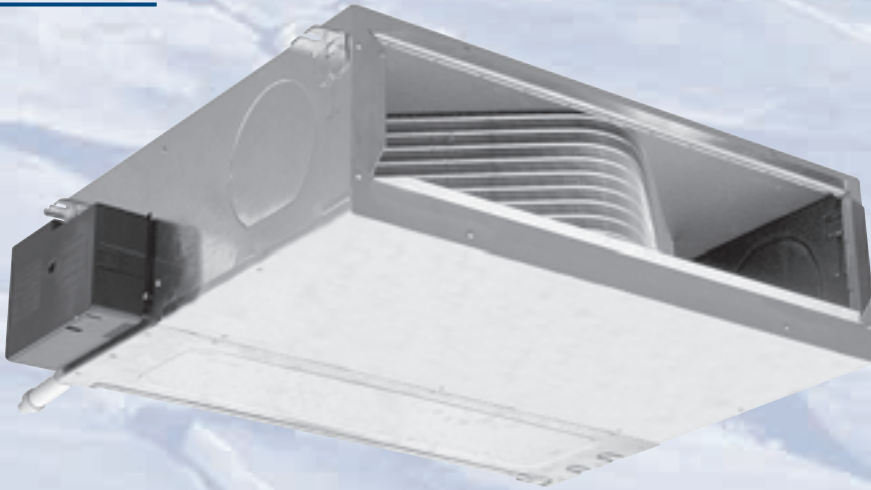
\* Based on standard Eurovent conditions:  
 Cooling 27°C db/19°C wb air temperature, 7°C/12°C entering/leaving water temperature  
 2-pipe heating: 20°C air temperature, 50°C entering water temperature, same water flow rate as in cooling  
 4-pipe heating: 20°C air temperature, 70°C/60°C entering/leaving water temperature

\*\* Sound pressure levels are based on a hypothetical acoustic attenuation for the room and the system (diffuser, ductwork, ceiling) of -18 dB(A) for a 2-pipe system

### Dimensions



35BD/SR linear diffuser (supply and return air)



## FEATURES

- Available in four sizes with two-pipe, two-pipe plus electric heater or four-pipe coils, with an air flow range from 230 to 800 l/s, a cooling capacity range from 5 to 14 kW and a heating capacity range from 7 to 20 kW
- Compact ducted chilled-water fan coil units, designed for installation above false ceilings
- Reliable and efficient heating and cooling for light commercial and residential applications
- Minimised size, using a V-shaped coil, and reduced height of 285 mm
- Air return from the rear or below for increased installation flexibility
- Air outlet modularity (sleeve or spigots), outlets on the front or at the sides
- High-capacity unit with low sound levels
- Four-speed motor, offering a choice of two medium comfort speeds
- High-pressure centrifugal fans
- Compatible with the 35BD/SR air diffuser range
- Safe factory-installed electric heater for single or two-stage hot water heating
- Low hydraulic pressure drop with a valve mounted, compatible with all chiller pump kits
- Quick installation with factory-installed options (controls, valves)
- Improved market competitiveness

## STANDARD CONTROLS

### Electronic thermostat



- Two versions, A and B, with potentiometer
- Automatic or manual three-speed selection
- Automatic or manual change-over
- Electric heat control
- Comfort/economy/frost protection modes

### HDB controller



- Digital display or infra-red terminal
- Unit grouping capability
- Adjustable settings and parameters
- Timer and daily scheduling

### NTC communicating controller



- Network communication
- Aquasmart Evolution system compatible
- IAQ and DCV management
- Motorised blinds and lighting control

## OPTIONS/ACCESSORIES

- Factory-installed two- or four-way valves
- High-efficiency filter