



30XAS "A" Air-Cooled Liquid Chillers

Nominal cooling capacity: 232-486 kW

50 Hz

PRO-DIALOG

AQUAFORCE™



Installation, operation and maintenance instructions



Quality and Environment
Management Systems
Approval

CONTENTS

1 - INTRODUCTION	4
1.1 - Installation safety considerations	4
1.2 - Equipment and components under pressure	5
1.3 - Maintenance safety considerations	5
1.4 - Repair safety considerations	6
2 - PRELIMINARY CHECKS	7
2.1 - Check equipment received	7
2.2 - Moving and siting the unit	7
3 - DIMENSIONS, CLEARANCES	9
3.1 - 30XAS 242	9
3.2 - 30XAS 282-342	9
3.3 - 30XAS 442-482	10
3.4 - Multiple chiller installation	10
3.5 - Distance to the wall	10
4 - PHYSICAL AND ELECTRICAL DATA FOR 30XAS UNITS	11
4.1 - Physical data 30XAS - standard and high-efficiency units (option 119), options 254/255/116C**	11
4.2 - Electrical data	12
4.3 - Electrical data, optional hydronic module (option 116C)	12
4.4 - Short-circuit stability current for all units	13
4.5 - 30XAS compressor electrical data	13
5 - ELECTRICAL CONNECTION	13
5.1 - Power supply	13
5.2 - Voltage phase imbalance (%)	13
5.3 - Recommended wire sections	14
5.4 - Power cable entry	14
5.5 - Field control wiring	14
6 - APPLICATION DATA	15
6.1 - Operating range	15
6.2 - Minimum chilled water flow (units without hydronic module)	15
6.3 - Maximum chilled water flow (units without hydronic module)	15
6.4 - Variable flow evaporator	16
6.5 - System minimum water volume	16
6.6 - Maximum system water volume	16
6.7 - Evaporator water flow rate	16
6.8 - Evaporator pressure drop curve	16
7 - WATER CONNECTIONS	16
7.1 - Operating precautions	16
7.2 - Victaulic water connections	17
7.3 - Flow control	17
7.4 - Evaporator water box bolt tightening	18
7.5 - Frost protection	18
7.6 - Operation of two units in master/slave mode (option 58)	19
7.7 - Pump characteristics	19
8 - HEAT RECLAIM CONDENSER OPTION (OPTION 50)	20
8.1 - Technical data, 30XAS units with heat reclaim condenser option	20
8.2 - Dimensions, clearances	20
8.3 - Condenser location	22
8.4 - Condenser water connections	22
8.5 - Operating limits for stable operation (no mode changeover)	22
8.6 - Operating limits for changeover between modes	22
8.7 - Flow control	23
8.8 - Heat reclaim operation	23
8.9 - Condenser pump selection	23
8.10 - Frost protection	23

9 - MAJOR SYSTEM COMPONENTS AND OPERATION DATA	24
9.1 - Direct-drive twin-screw compressor with variable capacity slide valve	24
9.2 - Pressure vessels.....	24
9.3 - Control and safety	25
9.4 - Condensers.....	25
9.5 - Fans	25
9.6 - Electronic expansion valve (EXV)	25
9.7 - Moisture indicator	25
9.8 - Filter drier	25
9.9 - Sensors.....	25
10 - MAIN OPTIONS.....	27
11 - STANDARD MAINTENANCE.....	28
11.1 - Level 1 maintenance (see note).....	28
11.2 - Level 2 maintenance (see note).....	28
11.3 - Level 3 (or higher) maintenance (see note).....	28
11.4 - Tightening torques for the main electrical connections.....	28
11.5 - Tightening torques for the main bolts and screws	29
11.6 - Condenser coil.....	29
11.7 - Evaporator maintenance	30
11.8 - Compressor maintenance	30
11.9 - Precaution for compressor power supply bus bar connection	30
12 - START-UP CHECKLIST FOR 30XAS LIQUID CHILLERS (USE FOR JOB FILE).....	31

The cover photograph is for illustrative purposes only and is not part of any offer for sale or contract.

1 - INTRODUCTION

The 30XAS Aquaforce units are designed to cool water for the air conditioning of buildings and industrial processes.

Prior to the initial start-up of the units, the people involved in the on-site installation, start-up, operation, and maintenance of this unit should be thoroughly familiar with these instructions and the specific project data for the installation site.

The 30XAS liquid chillers are designed to provide a very high level of safety during installation, start-up, operation and maintenance. They will provide safe and reliable service when operated within their application range.

This manual provides the necessary information to familiarize yourself with the control system before performing start-up procedures. The procedures in this manual are arranged in the sequence required for machine installation, start-up, operation and maintenance.

Always ensure that all required safety measures are followed, including those in this document, such as: wearing protective clothing (gloves, ear defenders, safety glasses and shoes), using appropriate tools, employing qualified and skilled technicians (electricians, refrigeration engineers) and following local regulations.

To find out, if these products comply with European directives (machine safety, low voltage, electromagnetic compatibility, equipment under pressure etc.) check the declarations of conformity for these products.

1.1 - Installation safety considerations

Access to the unit must be reserved to authorised personnel, qualified and trained in monitoring and maintenance. The access limitation device must be installed by the customer (e.g. cut-off, enclosure).

After the unit has been received, when it is ready to be installed or reinstalled, and before it is started up, it must be inspected for damage. Check that the refrigerant circuit(s) is (are) intact, especially that no components or pipes have shifted (e.g. following a shock). If in doubt, carry out a leak tightness check and verify with the manufacturer that the circuit integrity has not been impaired. If damage is detected, immediately file a claim with the shipping company.

Carrier strongly recommends employing a specialised company to unload the machine.

Do not remove the skid or the packaging until the unit is in its final position. These units can be moved with a fork lift truck, as long as the forks are positioned in the right place and direction on the unit.

The units can also be lifted with slings, using only the designated lifting points marked on the unit.

These units are not designed to be lifted from above. Use slings with the correct capacity, and always follow the lifting instructions on the certified drawings supplied with the unit.

Safety is only guaranteed, if these instructions are carefully followed. If this is not the case, there is a risk of material deterioration and injuries to personnel.

DO NOT COVER ANY PROTECTION DEVICES.

This applies to fuse plugs and safety valves (if used) in the refrigerant or heat transfer medium circuits. Check if the original protection plugs are still present at the valve outlets. These plugs are generally made of plastic and should not be used. If they are still present, please remove them. Install devices at the valve outlets or drain piping that prevent the penetration of foreign bodies (dust, building debris, etc.) and atmospheric agents (water can form rust or ice). These devices, as well as the drain piping, must not impair operation and not lead to a pressure drop that is higher than 10% of the control pressure.

Classification and control

In accordance with the Pressure Equipment Directive and national usage monitoring regulations in the European Union the protection devices for these machines are classified as follows:

	Safety accessory*	Damage limitation accessory** in case of an external fire
Refrigerant side		
High-pressure switch	x	
External relief valve***		x
Rupture disk		x
Fuse plug		x
Heat transfer fluid side		
External relief valve****	x	x

* Classified for protection in normal service situations.

** Classified for protection in abnormal service situations.

*** The instantaneous over-pressure limited to 10% of the operating pressure does not apply to this abnormal service situation. The control pressure can be higher than the service pressure. In this case either the design temperature or the high-pressure switch ensures that the service pressure is not exceeded in normal service situations.

**** The classification of these safety valves must be made by the personnel that completes the whole hydronic installation.

Do not remove these valves and fuses, even if the fire risk is under control for a particular installation. There is no guarantee that the accessories are re-installed if the installation is changed or for transport with a gas charge.

All factory-installed relief valves are lead-sealed to prevent any calibration change. If the relief valves are installed on a change-over manifold this is equipped with a relief valve on each of the two outlets. Only one of the two relief valves is in operation, the other one is isolated. Never leave the change-over valve in the intermediate position, i.e. with both ways open (locate the control element in the stop position). If a relief valve is removed for checking or replacement please ensure that there is always an active relief valve on each of the change-over valves installed in the unit.

The external safety valves must always be connected to drain pipes for units installed in a closed room. Refer to the installation regulations, for example those of European standard EN 378 and EN 13136.

These pipes must be installed in a way that ensures that people and property are not exposed to refrigerant leaks. As the fluids can be diffused in the air, ensure that the outlet is far away from any building air intake, or that they are discharged in a quantity that is appropriate for a suitably absorbing environment.

Periodic check of the relief valves: See paragraph 1.3 “Maintenance safety considerations”.

Provide a drain in the discharge circuit, close to each relief valve, to avoid an accumulation of condensate or rain water.

All precautions concerning handling of refrigerant must be observed in accordance with local regulations.

Ensure good ventilation, as accumulation of refrigerant in an enclosed space can displace oxygen and cause asphyxiation or explosions.

Inhalation of high concentrations of vapour is harmful and may cause heart irregularities, unconsciousness, or death. Vapour is heavier than air and reduces the amount of oxygen available for breathing. These products cause eye and skin irritation. Decomposition products are hazardous.

1.2 - Equipment and components under pressure

See chapter 9.2 “Pressure vessels”.

1.3 - Maintenance safety considerations

Engineers working on the electric or refrigeration components must be authorized, trained and fully qualified to do so.

All refrigerant circuit repairs must be carried out by a trained person, fully qualified to work on these units. He must have been trained and be familiar with the equipment and the installation. All welding operations must be carried out by qualified specialists.

Any manipulation (opening or closing) of a shut-off valve must be carried out by a qualified and authorised engineer. These procedures must be carried out with the unit shut-down.

NOTE: The unit must never be left shut down with the liquid line valve closed, as liquid refrigerant can be trapped between this valve and the expansion device. (This valve is situated on the liquid line before the filter drier box.)

During any handling, maintenance and service operations the engineers working on the unit must be equipped with safety gloves, glasses, shoes and protective clothing.

Never work on a unit that is still energized.

Never work on any of the electrical components, until the general power supply to the unit has been cut using the disconnect switch(es) in the control box(es).

If any maintenance operations are carried out on the unit, lock the power supply circuit in the open position ahead of the machine.

If the work is interrupted, always ensure that all circuits are still deenergized before resuming the work.

ATTENTION: Even if the unit has been switched off, the power circuit remains energized, unless the unit or circuit disconnect switch is open. Refer to the wiring diagram for further details. Attach appropriate safety labels.

Operating checks:

IMPORTANT INFORMATION REGARDING THE REFRIGERANT USED:

- *This product contains fluorinated greenhouse gas covered by the Kyoto protocol.
Refrigerant type: R-134a
Global Warming Potential (GWP): 1300*

Periodic inspections for refrigerant leaks may be required depending on European or local legislation. Please contact your local dealer for more information.

- *During the life-time of the system, inspection and tests must be carried out in accordance with national regulations.*

The information on operating inspections given in annex C of standard EN 378 can be used if no similar criteria exist in the national regulations.

While working in the fan area, especially when grilles or casings are removed, disconnect the fan power supply to prevent their automatic restart.

Protection device checks:

- *If no national regulations exist, check the protection devices on site in accordance with standard EN 378: once a year for the high-pressure switches, every five years for external safety valves.*
- *Refer to the 30XA/30XAS/30XW Pro-Dialog control manual for a detailed explanation of the high-pressure switch test method.*

If the machine operates in a corrosive environment, inspect the protection devices more frequently.

Regularly carry out leak tests and immediately repair any leaks.

Ensure regularly that the vibration levels remain acceptable and close to those at the initial unit start-up.

Before opening a refrigerant circuit, purge and consult the pressure gauges.

Change the refrigerant after an equipment failure, following a procedure such as the one described in NF E29-795 or carry out a refrigerant analysis in a specialist laboratory.

Plug all openings whenever the refrigerant circuit is opened for up to one day. For longer openings place a nitrogen charge in the circuit.

1.4 - Repair safety considerations

All installation parts must be maintained by the personnel in charge, in order to avoid material deterioration and injuries to people. Faults and leaks must be repaired immediately. The authorized technician must have the responsibility to repair the fault immediately. After each repair of the unit, check the operation of the protection devices and create a report of the parameter operation at 100%.

Comply with the regulations and recommendations in unit and HVAC installation safety standards, such as: EN 378, ISO 5149, etc.

If a leak occurs or if the refrigerant becomes contaminated (e.g. by a short circuit in a motor) remove the complete charge using a recovery unit and store the refrigerant in mobile containers.

Repair the leak detected and recharge the circuit with the total R-134a charge, as indicated on the unit name plate. Certain parts of the circuit can be isolated. Only charge liquid refrigerant R-134a at the liquid line.

Ensure that you are using the correct refrigerant type before recharging the unit.

Charging any refrigerant other than the original charge type (R-134a) will impair machine operation and can even lead to a destruction of the compressor. The compressors operating with this refrigerant type are lubricated with a synthetic polyolester oil.

RISK OF EXPLOSION: Never use air or a gas containing oxygen during leak tests to purge lines or to pressurise a machine. Pressurised air mixtures or gases containing oxygen can be the cause of an explosion.

Only use dry nitrogen for leak tests, possibly with an appropriate tracer gas.

If the recommendations above are not observed, this can have serious or even fatal consequences and damage the installation.

Never exceed the specified maximum operating pressures. Verify the allowable maximum high- and low-side test pressures by checking the instructions in this manual and the pressures given on the unit name plate.

Do not unweld or flamecut the refrigerant lines or any refrigerant circuit component until all refrigerant (liquid and vapour) has been removed from chiller. Traces of vapour should be displaced with dry air nitrogen. Refrigerant in contact with an open flame produces toxic gases.

The necessary protection equipment must be available, and appropriate fire extinguishers for the system and the refrigerant type used must be within easy reach.

Do not siphon refrigerant.

Avoid spilling liquid refrigerant on skin or splashing it into the eyes. Use safety goggles. Wash any spills from the skin with soap and water. If liquid refrigerant enters the eyes, immediately and abundantly flush the eyes with water and consult a doctor.

Never apply an open flame or live steam to a refrigerant container. Dangerous overpressure can result. If it is necessary to heat refrigerant, use only warm water.

During refrigerant removal and storage operations follow applicable regulations. These regulations, permitting conditioning and recovery of halogenated hydrocarbons under optimum quality conditions for the products and optimum safety conditions for people, property and the environment are described in standard NFE 29795.

Any refrigerant transfer and recovery operations must be carried out using a transfer unit. A 3/8" SAE connector on the manual liquid line valve is supplied with all units for connection to the transfer station. The units must never be modified to add refrigerant and oil charging, removal and purging devices. All these devices are provided with the units. Please refer to the certified dimensional drawings for the units.

Do not re-use disposable (non-returnable) cylinders or attempt to refill them. It is dangerous and illegal. When cylinders are empty, evacuate the remaining gas pressure, and move the cylinders to a place designated for their recovery. Do not incinerate them.

ATTENTION: Only use refrigerant R134a, in accordance with 700 AHRI (Air conditioning, Heating and Refrigeration Institute). The use of any other refrigerant may expose users and operators to unexpected risks.

Do not attempt to remove refrigerant circuit components or fittings, while the machine is under pressure or while it is running. Be sure pressure is at 0 kPa and that the unit has been shut-down and de-energised before removing components or opening a circuit.

Do not attempt to repair or recondition any safety devices when corrosion or build-up of foreign material (rust, dirt, scale, etc.) is found within the valve body or mechanism. If necessary, replace the device. Do not install safety valves in series or backwards.

ATTENTION: No part of the unit must be used as a walk-way, rack or support. Periodically check and repair or if necessary replace any component or piping that shows signs of damage.

The refrigerant lines can break under the weight and release refrigerant, causing personal injury.

Do not climb on a machine. Use a platform, or staging to work at higher levels.

Use mechanical lifting equipment (crane, hoist, winch, etc.) to lift or move heavy components. For lighter components, use lifting equipment when there is a risk of slipping or losing your balance.

Use only original replacement parts for any repair or component replacement. Consult the list of replacement parts that corresponds to the specification of the original equipment.

Do not drain water circuits containing industrial brines, without informing the technical service department at the installation site or a competent body first.

Close the entering and leaving water shutoff valves and purge the unit water circuit, before working on the components installed on the circuit (screen filter, pump, water flow switch, etc.).

Do not loosen the water box bolts until the water boxes have been completely drained.

Periodically inspect all valves, fittings and pipes of the refrigerant and hydronic circuits to ensure that they do not show any corrosion or any signs of leaks.

It is recommended to wear ear defenders, when working near the unit and the unit is in operation.

2 - PRELIMINARY CHECKS

2.1 - Check equipment received

- Inspect the unit for damage or missing parts. If damage is detected, or if shipment is incomplete, immediately file a claim with the shipping company.
- Confirm that the unit received is the one ordered. Compare the name plate data with the order.
- The unit name plate must include the following information:
 - Version number
 - Model number
 - CE marking
 - Serial number
 - Year of manufacture and test date
 - Refrigerant used and refrigerant class
 - Refrigerant charge per circuit
 - Containment fluid to be used
 - PS: Min./max. allowable pressure (high and low pressure side)
 - TS: Min./max. allowable temperature (high and low pressure side)
 - Relief valve set pressure
 - Pressure switch cut-out pressure
 - Unit leak test pressure
 - Voltage, frequency, number of phases
 - Maximum current drawn
 - Maximum power input
 - Unit net weight
- Confirm that all accessories ordered for on-site installation have been delivered, and are complete and undamaged.

The unit must be checked periodically during its whole operating life to ensure that no shocks (handling accessories, tools etc.) have damaged it. If necessary, the damaged parts must be repaired or replaced. See also chapter 11 “Standard maintenance”.

2.2 - Moving and siting the unit

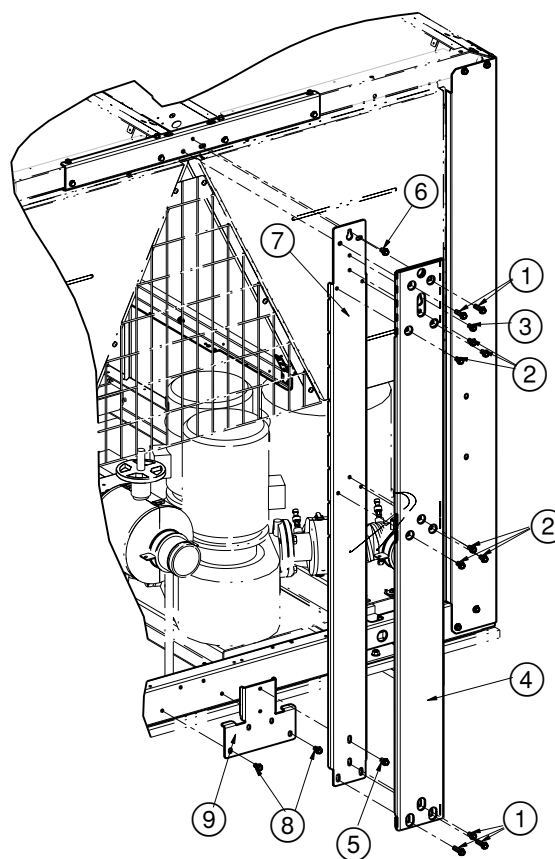
2.2.1 - Moving

See chapter 1.1 “Installation safety considerations”.

In some cases vertical supports are added for the transport and handling of the unit. These supports can be removed for access or connection, if required.

IMPORTANT: Follow the disassembly sequence shown in the disassembly instruction notes.

- Unscrew screws marked 1 and 2
- Loosen screw 3, and lift and remove support 4
- Unscrew screw 5 and loosen screw 6.
- Lift and remove support 7.
- Unscrew screw 8 and remove plate 9.



2.2.2 - Siting the unit

Always refer to the chapter “Dimensions and clearances” to confirm that there is adequate space for all connections and service operations. For the centre of gravity coordinates, the position of the unit mounting holes, and the weight distribution points, refer to the certified dimensional drawing supplied with the unit.

The support points under the chassis must have at least the size of the chassis opening at the lifting point (minimum 220 x 180 mm) in order to prevent a deformation of the chassis.

Typical applications of these units are in refrigeration systems, and they do not require earthquake resistance. Earthquake resistance has not been verified.

CAUTION: Only use slings at the designated lifting points which are marked on the unit.

Before siting the unit check that:

- the permitted loading at the site is adequate or that appropriate strengthening measures have been taken.
- the unit is installed level on an even surface (maximum tolerance is 5 mm in both axes).
- there is adequate space above the unit for air flow and to ensure access to the components.
- the number of support points is adequate and that they are in the right places.
- the location is not subject to flooding.
- for outdoor installations, where heavy snowfall is likely and long periods of sub-zero temperatures are normal, provision has to be made to prevent snow accumulating by raising the unit above the height of drifts normally experienced.
- Baffles may be necessary to deflect strong winds. They must not restrict air flow into the unit.

CAUTION: Before lifting the unit, check that all casing panels are securely fixed in place. Lift and set down the unit with great care. Tilting and jarring can damage the unit and impair unit operation.

If 30XAS units are hoisted with rigging, it is advisable to protect coils against crushing while a unit is being moved. Use struts or spreader bar to spread the slings above the unit. Do not tilt a unit more than 15°.

WARNING: Never push or lever on any of the enclosure panels of the unit. Only the base of the unit frame is designed to withstand such stresses.

2.2.3 - Checks before system start-up

Before the start-up of the refrigeration system, the complete installation, including the refrigeration system must be verified against the installation drawings, dimensional drawings, system piping and instrumentation diagrams and the wiring diagrams.

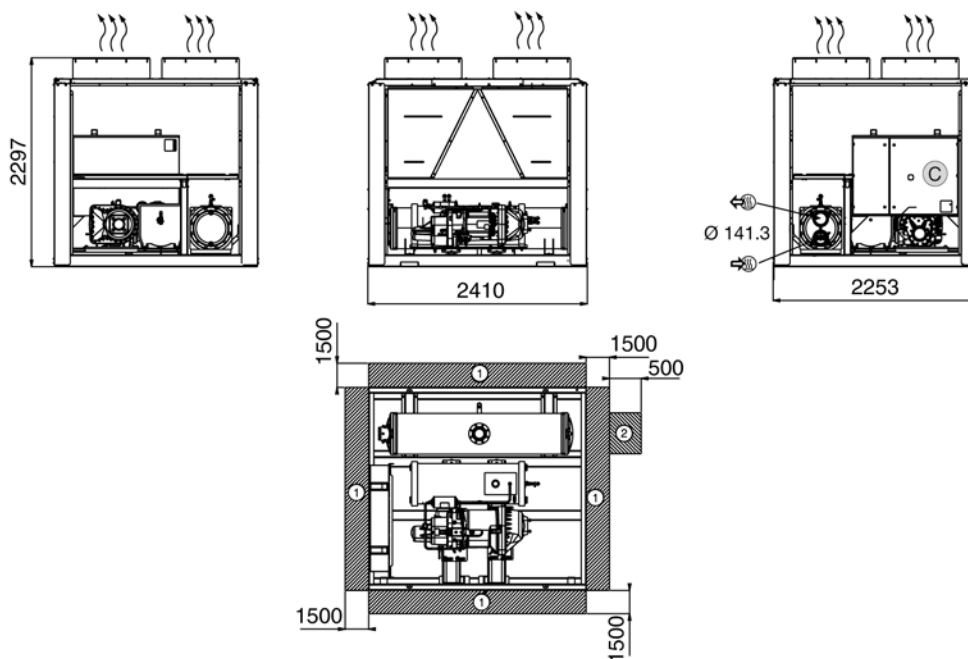
During the installation test national regulations must be followed. If no national regulation exists, paragraph 9-5 of standard EN 378 can be used as a guide.

External visual installation checks:

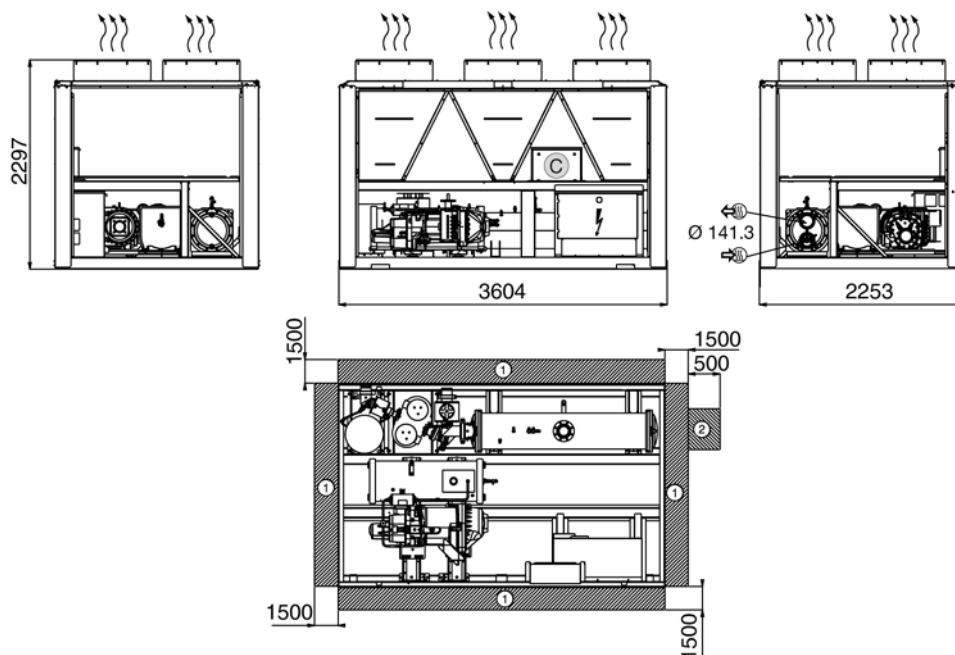
- Compare the complete installation with the refrigeration system and power circuit diagrams.
- Check that all components comply with the design specifications.
- Check that all protection documents and equipment provided by the manufacturer (dimensional drawings, P&ID, declarations etc.) to comply with the regulations are present.
- Verify that the environmental safety and protection and devices and arrangements provided by the manufacturer to comply with the regulations are in place.
- Verify that all documents for pressure containers, certificates, name plates, files, instruction manuals provided by the manufacturer to comply with the regulations are present.
- Verify the free passage of access and safety routes.
- Check that ventilation in the plant room is adequate.
- Check that refrigerant detectors are present.
- Verify the instructions and directives to prevent the deliberate removal of refrigerant gases that are harmful to the environment.
- Verify the installation of connections.
- Verify the supports and fixing elements (materials, routing and connection).
- Verify the quality of welds and other joints.
- Check the protection against mechanical damage.
- Check the protection against heat.
- Check the protection of moving parts.
- Verify the accessibility for maintenance or repair and to check the piping.
- Verify the status of the valves.
- Verify the quality of the thermal insulation and of the vapour barriers.

3 - DIMENSIONS, CLEARANCES

3.1 - 30XAS 242



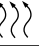




3.2 - 30XAS 282-342



Legend:

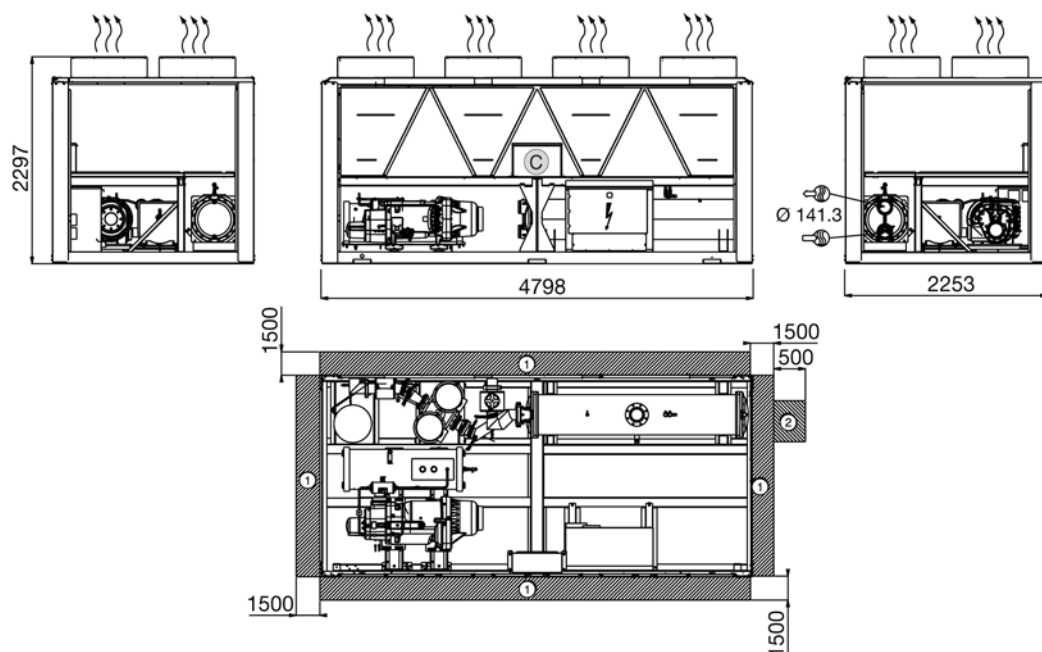
All dimensions are given in mm.

- ① Required clearances for maintenance and air flow
- ② Recommended space for evaporator tube removal
-  Water inlet
-  Water outlet
-  Air outlet - do not obstruct
-  Power supply connection
-  Control circuit connection

NOTE: Drawings are not contractually binding. Before designing an installation, consult the certified dimensional drawings supplied with the unit or available on request.



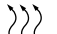


For the positioning of the fixing points, weight distribution and centre of gravity coordinates please refer to the dimensional drawings.

3.3 - 30XAS 442-482



Legend:

All dimensions are given in mm.

- ① Required clearances for maintenance and air flow
- ② Recommended space for evaporator tube removal
-  Water inlet
-  Water outlet
-  Air outlet - do not obstruct
-  Power supply connection
-  Control circuit connection

NOTE: Drawings are not contractually binding. Before designing an installation, consult the certified dimensional drawings supplied with the unit or available on request.

For the positioning of the fixing points, weight distribution and centre of gravity coordinates please refer to the dimensional drawings.

3.4 - Multiple chiller installation

It is recommended to install multiple chillers in a single row, arranged as shown in the example below, to avoid recycling of warm air from one unit to another.



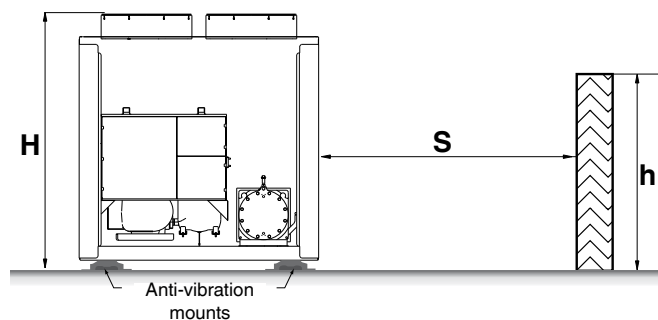
If the situation at the site does not permit this arrangement, contact your Carrier distributor to estimate the space required between units.

3.5 - Distance to the wall

To ensure correct operation for most cases:

If $h < H$ (2.3 m), minimum $S = 3$ m

If $h > H$ or $S < 3$ m, contact your Carrier distributor.



4 - PHYSICAL AND ELECTRICAL DATA FOR 30XAS UNITS

4.1 - Physical data 30XAS - standard and high-efficiency units (option 119), options 254/255/116C**

30XAS		242	282	342	442	482
Operating weight*	kg	2390	2810	2870	3630	3720
With option 116C**	kg	-	3070	3190	3990	4150
With options 254 or 255**	kg	2540	3060	3140	3950	4070
Sound levels						
Standard unit		99	98	98	103	102
Sound power***	dB(A)	67	66	66	70	70
Sound pressure at 10 m****	dB(A)					
Standard unit with option 279		94	94	93	97	96
Sound power***	dB(A)	62	62	61	65	64
Sound pressure at 10 m****	dB(A)					
Standard unit with option 257		92	92	91	95	94
Sound power***	dB(A)	60	60	59	62	61
Sound pressure at 10 m****	dB(A)					
Standard unit with option 258		89	89	88	92	91
Sound power***	dB(A)	57	57	56	59	58
Sound pressure at 10 m****	dB(A)					
High-energy-efficiency unit (option 119)						
Sound power***	dB(A)	96	96	96	98	98
Sound pressure at 10 m****	dB(A)	64	64	63	66	66
High-energy-efficiency unit (option 119 + option 257)						
Sound power***	dB(A)	95	95	95	97	97
Sound pressure at 10 m****	dB(A)	63	62	62	65	64
Compressor		06T semi-hermetic screw compressor, 50 r/s				
Oil charge	l	23.5	23.5	23.5	27.6	27.6
Refrigerant*		R-134a				
No. of circuits		1	1	1	1	1
Refrigerant charge	kg	60	72	73	83	88
Refrigerant charge option 254/255**	kg	85	95	105	120	130
Capacity control		PRO-DIALOG+, electronic expansion valves (EXV)				
Minimum capacity	%	30	30	30	30	30
Condensers		All-aluminium micro-channel heat exchanger				
Condenser fans		Axial Flying Bird IV fans with rotating shroud				
Standard units and options 119/254**						
Quantity		4	5	6	7	8
Total air flow, standard unit	l/s	13667	17083	20500	23917	27333
Fan speed, standard unit	r/s	11.7	11.7	11.7	11.7	11.7
Total air flow - unit with option 119**	l/s	18055	22569	27083	31597	36111
Fan speed - unit with option 119**	r/s	15.7	15.7	15.7	15.7	15.7
Evaporator		Flooded shell-and-tube type				
Water content	l	53	53	53	75	75
Without hydronic module						
Water connections, inlet/outlet		Victaulic				
Nominal diameter	in	5	5	5	5	5
Actual outside diameter	mm	141.3	141.3	141.3	141.3	141.3
Max. water-side pressure	kPa	1000	1000	1000	1000	1000
With hydronic module (option 116C**)						
Water connections, inlet/outlet		Victaulic				
Nominal diameter	in	-	4	4	4	4
Actual outside diameter	mm	-	114.3	114.3	114.3	114.3
Expansion tank volume	l	-	50	50	50	50
Max. water-side pressure	kPa	-	400	400	400	400
Chassis paint colour		Colour code: RAL7035				

* Weights are guidelines only. The refrigerant charge is also given on the unit nameplate.

** Options: 116C = high-pressure dual-pump hydronic module; 119 = high energy efficiency unit; 254 = unit with copper/aluminium coils with slots; 255 = unit with copper/aluminium coils with plain fins; 257 = low sound level, 258 = very low sound level, 279 = compressor enclosure.

*** 10⁻¹² W - in accordance with ISO 9614-1 and certified by Eurovent.

**** Average sound pressure level, unit in a free field on a reflecting surface. For information, calculated from the sound power level L_w(A).

Note: Option 119 (high energy efficiency) can be used together with options 254 and 255. Contact your Carrier representative to obtain the performances.

4.2 - Electrical data

30XAS		242	282	342	442	482
Power circuit						
Nominal power supply	V-ph-Hz	400-3-50				
Voltage range	V	360-440				
Control circuit		24 V via internal transformer				
Start-up current*	A	303	388	388	587	587
Standard units						
Cosine Phi maximum**		0.89	0.88	0.88	0.87	0.87
Cosine Phi nominal***		0.85	0.85	0.86	0.84	0.85
Maximum power input****	kW	101	113	134	184	213
Nominal unit current draw***	A	141	153	174	258	278
Maximum unit current draw (Un)****	A	165	185	218	305	353
Maximum unit current draw (Un -10%)**	A	180	198	231	324	375
Units with option 119						
Cosine Phi maximum**		0,88	0,88	0,88	0,87	0,87
Cosine Phi nominal***		0,84	0,85	0,85	0,83	0,84
Maximum power input****	kW	105	118	139	190	221
Nominal unit current draw***	A	141	153	175	254	271
Maximum unit current draw (Un)****	A	172	194	229	318	368
Maximum unit current draw (Un -10%)**	A	187	207	242	337	390

* Instantaneous start-up current (locked rotor current with star connection of the compressor).

** Values obtained at operation with maximum unit power input.

*** Values obtained at standard Eurovent unit operating conditions: air 35°C, water 12/7°C.

**** Values obtained at operation with maximum unit power input. Values given on the unit name plate.

Note:

Motor and fan electrical data if the unit operates at Eurovent conditions (ambient motor temperature 50°C): 1.9 A, start-up current: 8.4 A, power input: 760 W.

4.3 - Electrical data, optional hydronic module (option 116C)

The pumps that are factory-installed in these units have motors with efficiency class IE2. The additional electrical data required is as follows:*

No.**	Description***		30XAS			
			282	342	442	482
1	Nominal efficiency at full load and nominal voltage	%	86.1	88.6	88.5	90.5
1	Nominal efficiency at 75% rated load and nominal voltage	%	85.7	86.9	87.7	89.3
1	Nominal efficiency at 50% rated load and nominal voltage	%	84.3	85.2	85.9	87.5
2	Efficiency level		IE2			
3	Year of manufacture		This information varies depending on the manufacturer and model at the time of incorporation. Please refer to the motor name plates.			
4	Manufacturer's name and trademark, commercial registration number and place of manufacturer					
5	Product's model number					
6	Number of motor poles		2			
7-1	Rated shaft power output at full load and nominal voltage (400 V)	kW	4.0	5.5	7.5	11
7-2	Maximum power input (400 V)****	kW	4.6	6.2	8.5	12.2
8	Rated input frequency	Hz	50			
9-1	Rated voltage	V	3 x 400			
9-2	Maximum current drawn at nominal voltage (400 V)†	A	7.7	10.2	13.7	20.5
10	Rated speed	r/s (rpm)	48 (2900)			
11	Product disassembly, recycling or disposal at end of life		Disassembly using standard tools. Disposal and recycling using an appropriate company.			
12	Operating conditions for which the motor is specifically designed					
	I - Altitudes above sea level	m	< 1000††			
	II - Ambient air temperature	°C	< 40			
	IV - Maximum air temperature	°C	Please refer to the operating conditions given in this manual or in the specific conditions in the Carrier selection programs.			
	V - Potentially explosive atmospheres		Non-ATEX environment			

* Required by regulation 640/2009 with regard to the application of directive 2005/32/EC on the eco-design requirements for electric motors

** Item number imposed by regulation 640/2009, annex I2b.

*** Description given by regulation 640/2009, annex I2b.

**** To obtain the maximum power input for a unit with hydronic module add the maximum unit power input from the electrical data table to the pump power input.

† To obtain the maximum unit operating current draw for a unit with hydronic module add the maximum unit current draw from the electrical data table to the pump current draw.

†† Above 1000 m, a degradation of 3% for each 500 m should be taken into consideration.

4.4 - Short-circuit stability current for all units

30XAS		242	282	342	442	482
Short-circuit stability current (TN system)*	kA**	38	50	50	50	50

* Type of system earthing

** rms value

4.5 - 30XAS compressor electrical data

30XAS	Compressor	I Nom* Std/Option 119	I Max (Un)**	MHA	LRYA (Un)	LRDA (Un)	Cosine Phi (max.)**	Cosine Phi (nom.)*
242	06TTA266	133/125	157	172	303	945	0.90	0.86
282	06TTA301	143/134	175	188	388	1210	0.90	0.87
342	06TTA356	163/153	207	220	388	1210	0.90	0.88
442	06TUA483	245/228	292	311	587	1828	0.88	0.85
482	06TUA554	263/241	338	360	587	1828	0.88	0.86

* Average value for the range (unit at Eurovent conditions)

** Value at maximum capacity and nominal voltage (400 V)

Legend

MHA - Maximum compressor operating current, limited by the unit (current given for maximum capacity at 360 V)

LRYA - Locked rotor current for star connection (connection during compressor start-up)

LRDA - Locked rotor current for delta connection

Electrical data notes and operating conditions for 30XAS units:

- 30XAS 242-482 units have a single power connection point located immediately upstream of the main disconnect switch.
- The control box includes the following standard features:
 - One general disconnect switch
 - Starter and motor protection devices for the compressor, the fan(s) and the pump
 - Control devices

Field connections:

- All connections to the system and the electrical installations must be in full accordance with all applicable local codes.
- The Carrier 30XAS units are designed and built to ensure conformance with these codes. The recommendations of European standard EN 60 204-1 (corresponds to IEC 60204-1) (machine safety - electrical machine components - part 1: general regulations) are specifically taken into account, when designing the electrical equipment.

IMPORTANT:

- Generally the recommendations of IEC 60364 are accepted as compliance with the requirements of the installation directives. Conformance with EN 60 204 is the best means of ensuring compliance with the Machines Directive § 1.5.1.
- Annex B of EN 60204-1 describes the electrical characteristics used for the operation of the machines.

- The operating environment for the 30XAS units is specified below:
 - Environment* - Environment as classified in EN 60 721 (corresponds to IEC 60721) :
 - outdoor installation*
 - ambient temperature range: -20°C to +55°C, class 4K4H*
 - altitude: ≤ 2000 m
 - presence of hard solids, class 4S2* (no significant dust present)
 - presence of corrosive and polluting substances, class 4C2 (negligible)
 - Power supply frequency variation: ± 2 Hz.
 - The neutral (N) line must not be connected directly to the unit (if necessary use a transformer).
 - Overcurrent protection of the power supply conductors is not provided with the unit.
 - The factory-installed disconnect switch(es)/circuit breaker(s) is (are) of a type suitable for power interruption in accordance with EN 60947-3 (corresponds to IEC 60947-3).
 - The units are designed for simplified connection on TN(s) networks (IEC 60364). For IT networks derived currents may interfere with network monitoring elements, and it is recommended to create an IT type divider for the system units that require this and/or a TN type divider for Carrier units. Please consult the appropriate local organisations to define the monitoring and protection elements and carry out the electrical installation.

NOTE: If particular aspects of an actual installation do not conform to the conditions described above, or if there are other conditions which should be considered, always contact your local Carrier representative.

* The required protection level for this class is IP43BW (according to reference document IEC 60529). All 30XAS units are protected to IP44CW and fulfil this protection condition.

5 - ELECTRICAL CONNECTION

Please refer to the certified dimensional drawings, supplied with the unit.

5.1 - Power supply

The power supply must conform to the specification on the chiller nameplate. The supply voltage must be within the range specified in the electrical data table. For connections refer to the wiring diagrams and the certified dimensional drawings.

WARNING: Operation of the chiller with an improper supply voltage or excessive phase imbalance constitutes abuse which will invalidate the Carrier warranty. If the phase imbalance exceeds 2% for voltage, or 10% for current, contact your local electricity supply at once and ensure that the chiller is not switched on until corrective measures have been taken.

5.2 - Voltage phase imbalance (%)

$$\frac{100 \times \text{max. deviation from average voltage}}{\text{Average voltage}}$$

Example:

On a 400 V - 3 ph - 50 Hz supply, the individual phase voltages were measured to be:

$$AB = 406 \text{ V}; BC = 399; AC = 394 \text{ V}$$

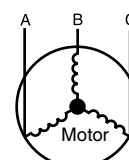
$$\text{Average voltage} = (406 + 399 + 394)/3 = 1199/3 = 399.7 \text{ say } 400 \text{ V}$$

Calculate the maximum deviation from the 400 V average:

$$(AB) = 406 - 400 = 6$$

$$(BC) = 400 - 399 = 1$$

$$(CA) = 400 - 394 = 6$$



The maximum deviation from the average is 6 V. The greatest percentage deviation is: $100 \times 6/400 = 1.5\%$

This is less than the permissible 2% and is therefore acceptable.

5.3 - Recommended wire sections

Wire sizing is the responsibility of the installer, and depends on the characteristics and regulations applicable to each installation site. The following is only to be used as a guideline, and does not make in any way liable. After wire sizing has been completed, using the certified dimensional drawing, the installer must ensure easy connection and define any modifications necessary on site.

The connections provided as standard for the field-supplied power entry cables to the general disconnect/isolator switch are designed for the number and type of wires, listed in the table below.

The calculations are based on the maximum machine current (see electrical data tables).

For the design the following standardised installation methods are used, in accordance with IEC 60364, table 52C:

- For 30XAS units installed outside the building:
No.17: suspended aerial lines
No. 61: buried conduit with a derating coefficient of 20.

The calculation is based on PVC or XLPE insulated cables with copper core. The maximum temperature is 46°C for 30XAS units.

The given wire length limits the voltage drop to < 5%.

IMPORTANT: Before connection of the main power cables (L1 - L2 - L3) on the terminal block, it is imperative to check the correct order of the 3 phases before proceeding to the connection on then terminal block or the main disconnect/isolator switch.

5.4 - Power cable entry

The power cables can enter the control box from below or from the unit side.

For 30XAS unit sizes 282 to 482 the control box that includes the power supply cable connection terminal is located in the lower part of the unit. In this case the control box is raised by 120 mm compared to the lowest point of the chassis.

The cable entry point depends on the unit configuration:

1. Unit raised from the ground (e.g. installation on support rails): It is recommended to enter the power cables from below the control box. A removable aluminium plate below the control box allows introduction of the cables.
2. Unit placed on the ground: For power cable entry from below the control box ensure that the cable bend radius is compatible with the connection space available in the control box. If not, an aluminium plate on the control box face allows introduction of the cables.

IMPORTANT: Check the cable bend radius for cable entry into a control box, located in the lower part of the unit.

Refer to the certified dimensional drawing for the unit.

5.5 - Field control wiring

Refer to the 30XA/30XAS/30XW Pro-Dialog control manual and the certified wiring diagram supplied with the unit for the field control wiring of the following features:

- Evaporator pump interlock (mandatory)
- Remote on/off switch
- Demand limit external switch
- Remote dual set point
- Alarm, alert and operation report
- Evaporator pump control
- Heat reclaim condenser pump control (option)
- Hot water valve control (option)
- Set point reset via outside air temperature sensor reset
- Various interlocks on the Energy Management Module (EMM) board (accessory or option)

Selection table of minimum and maximum wire sections for connection to 30XAS units

30XAS	Maximum wire section	Minimum calculated section			Maximum calculated section		
	Section (mm ²)	Section (mm ²)*	Max. length (m)	Wire type	Section (mm ²)*	Max. length (m)	Wire type
242	2 x 150	1 x 70	200	XLPE Cu	1 x 240	500	PVC Cu
282	2 x 95	1 x 70	190	XLPE Cu	2 x 95	410	PVC Cu
342	2 x 150	1 x 95	200	XLPE Cu	2 x 120	435	PVC Cu
442	2 x 150	1 x 150	200	XLPE Cu	2 x 185	480	PVC Cu
482	2 x 240	1 x 240	250	XLPE Cu	2 x 240	500	PVC Cu

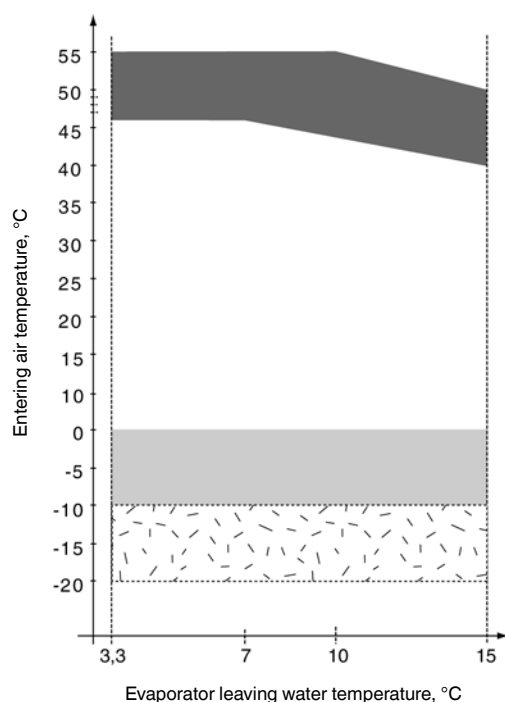
* Power supply wire section (see diagram in chapter 5 'Electrical connection').

Note: The current values used are given for a unit equipped with a hydronic kit operating at maximum current.

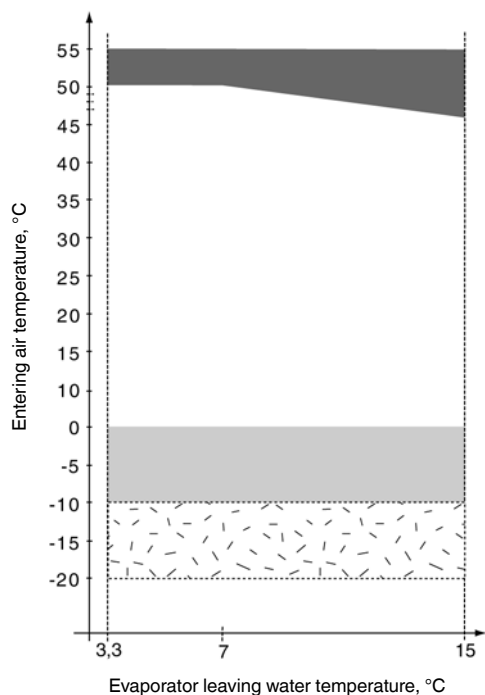
6 - APPLICATION DATA

6.1 - Operating range

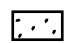


30XAS standard unit



30XAS unit with option 119



Legend:

-  Operating range, unit equipped with option 28 (winter operation).
-  Below 0°C air temperature the unit must either be equipped with the evaporator frost protection option (41A or 41B), or the water loop must be protected against frost by using a frost protection solution (by the installer).
-  Part load average

Evaporator water temperature, °C	Minimum	Maximum
Water entering temperature at start-up	-	45*
Water entering temperature during operation	6.8	21
Water leaving temperature during operation	3.3	15

Note: If the leaving water temperature is below 4°C, a glycol/water solution or the frost protection option must be used.

Condenser air temperature, °C	Minimum	Maximum
Storage	-20	68
Operation, standard unit	-10	55**
With winter operation option (option 28)	-20	55**
Operation, with high energy efficiency (option 119)***	-10	55****

Note: If the air temperature is below 0°C, a glycol/water solution or the frost protection option must be used.

* Based on the installation type and the air temperature

** Part load, based on the water temperature

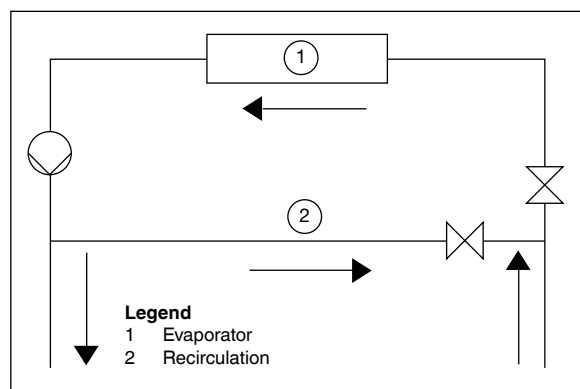
*** Recommended for operation above 46°C

**** Part-load operation

6.2 - Minimum chilled water flow (units without hydronic module)

The minimum chilled water flow is shown in the table on the next page. If the system flow is less than this, the evaporator flow can be recirculated, as shown in the diagram.

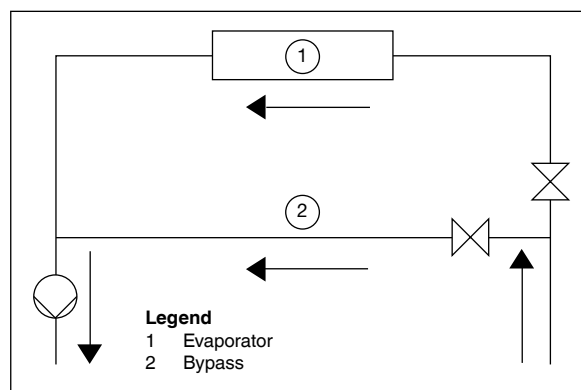
For minimum chilled water flow rate



6.3 - Maximum chilled water flow (units without hydronic module)

The maximum chilled water flow is shown in the table on the next page. If the system flow exceeds the maximum value, it can be bypassed as shown in the diagram.

For maximum chilled water flow rate



6.4 - Variable flow evaporator

Variable evaporator flow can be used in standard 30XAS chillers. The chillers maintain a constant leaving water temperature under all flow conditions. For this to happen, the minimum flow rate must be higher than the minimum flow given in the table of permissible flow rates and must not vary by more than 10% per minute.

If the flow rate changes more rapidly, the system should contain a minimum of 6.5 litres of water per kW instead of 3.25 l/kW.

6.5 - System minimum water volume

Whichever the system, the water loop minimum capacity is given by the formula:

$$\text{Capacity} = \text{Cap (kW)} \times \text{N litres}$$

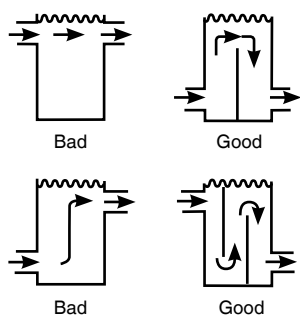
Application	N
Normal air conditioning	3.25
Process type cooling	6.5

Where Cap is the nominal system cooling capacity (kW) at the nominal operating conditions of the installation.

This volume is necessary for stable operation and accurate temperature control.

It is often necessary to add a buffer water tank to the circuit in order to achieve the required volume. The tank must itself be internally baffled in order to ensure proper mixing of the liquid (water or brine). Refer to the examples below.

Connection to a buffer tank



6.6 - Maximum system water volume

Units with hydronic module incorporate an expansion tank that limits the water volume. The table below gives the maximum loop volume for pure water or ethylene glycol with various system concentrations, as well as the static pressures. If the maximum volume is insufficient, compared to the minimum system water loop volume, an additional expansion tank must be added to the system.

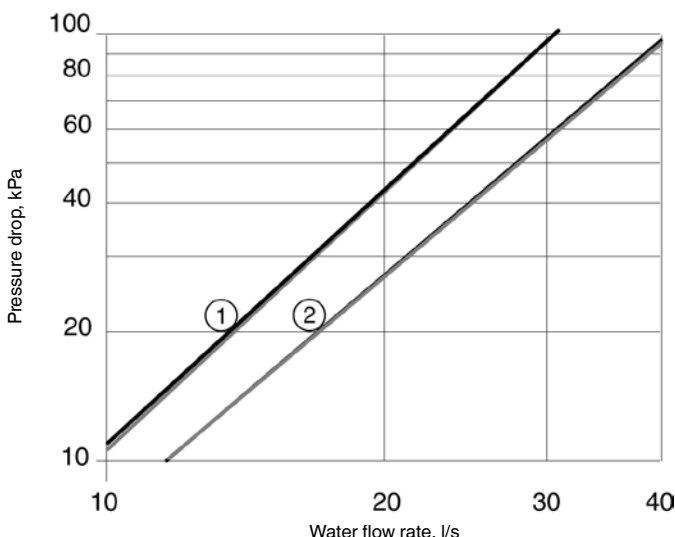
30XAS		242-482	
Static pressure	bar	1	2
Maximum water loop volume	l		
Pure water		2400	1600
Ethylene glycol 10%		1800	1200
Ethylene glycol 20%		1320	880
Ethylene glycol 30%		1080	720
Ethylene glycol 40%		900	600

6.7 - Evaporator water flow rate

30XAS	Evaporator water flow rate, l/s	
	Min. flow rate	Max. flow rate*
242	3.2	30.7
282	3.7	30.7
342	4.4	30.7
442	5.8	41.0
482	6.5	41.0

* The maximum water flow rate corresponds to a pressure drop of 100 kPa.

6.8 - Evaporator pressure drop curve



Legend

- ① 30XAS 242-342
- ② 30XAS 442-482

7 - WATER CONNECTIONS

ATTENTION: Before carrying out any water connections install the water box purge plugs (one plug per water box in the lower section - supplied in the control box).

For size and position of the heat exchanger water inlet and outlet connections refer to the certified dimensional drawings supplied with the unit.

The water pipes must not transmit any radial or axial force to the heat exchangers nor any vibration.

The water supply must be analysed and appropriate filtering, treatment, control devices, isolation and bleed valves and circuits built in, to prevent corrosion, fouling and deterioration of the pump fittings. Consult either a water treatment specialist or appropriate literature on the subject.

7.1 - Operating precautions

The water circuit should be designed to have the least number of elbows and horizontal pipe runs at different levels.

Below the main points to be checked for the connection:

- Comply with the water inlet and outlet connections shown on the unit.
- Install manual or automatic air purge valves at all high points in the circuit(s).
- Use an expansion device to maintain pressure in the circuit(s) and install a safety valve as well as an expansion tank.

- Install thermometers in both the entering and leaving water connections.
- Install drain connections at all low points to allow the whole circuit to be drained.
- Install stop valves, close to the entering and leaving water connections.
- Use flexible connections to reduce the transmission of vibrations.
- Insulate all pipework, after testing for leaks, both to reduce heat gains and to prevent condensation.
- Cover the insulation with a vapour barrier.
- Where there are particles in the fluid that could foul the heat exchanger, a screen filter should be installed ahead of the pump. The mesh size of the filter must be 1.2 mm (see 'Typical water circuit' diagram on the right).
- Before the system start-up verify that the water circuits are connected to the appropriate heat exchangers (e.g. no reversal between evaporator and condenser).
- Do not introduce any significant static or dynamic pressure into the heat exchange circuit (with regard to the design operating pressures).
- Before any start-up verify that the heat exchange fluid is compatible with the materials and the water circuit coating.

In case additives or other fluids than those recommended by Carrier are used, ensure that the fluids are not considered as a gas, and that they belong to class 2, as defined in directive 97/23/EC.

Carrier recommendations on heat exchange fluids:

- No NH_4^+ ammonium ions in the water, they are very detrimental for copper. This is one of the most important factors for the operating life of copper piping. A content of several tenths of mg/l will badly corrode the copper over time.
- Cl^- Chloride ions are detrimental for copper with a risk of perforations by corrosion by puncture. If possible keep below 10 mg/l.
- SO_4^{2-} sulphate ions can cause perforating corrosion, if their content is above 30 mg/l.
- No fluoride ions (<0.1 mg/l).
- No Fe^{2+} and Fe^{3+} ions with non negligible levels of dissolved oxygen must be present. Dissolved iron < 5 mg/l with dissolved oxygen < 5 mg/l.
- Dissolved silicon: silicon is an acid element of water and can also lead to corrosion risks. Content < 1 mg/l.
- Water hardness: > 0.5 mmol/l. Values between 1 and 2.5 can be recommended. This will facilitate scale deposit that can limit corrosion of copper. Values that are too high can cause piping blockage over time. A total alkalimetric titre (TAC) below 100 is desirable.
- Dissolved oxygen: Any sudden change in water oxygenation conditions must be avoided. It is as detrimental to deoxygenate the water by mixing it with inert gas as it is to over-oxygenate it by mixing it with pure oxygen. The disturbance of the oxygenation conditions encourages destabilisation of copper hydroxides and enlargement of particles.

- Specific resistance – electric conductivity: the higher the specific resistance, the slower the corrosion tendency. Values above 30 Ohm·m are desirable. A neutral environment favours maximum specific resistance values. For electric conductivity values in the order of 20-60 mS/m can be recommended.
- pH: Ideal case pH neutral at 20-25°C
7 < pH < 8

If the water circuit must be emptied for longer than one month, the complete circuit must be placed under nitrogen charge to avoid any risk of corrosion by differential aeration.

ATTENTION: Filling, completing and draining the water circuit charge must be done by qualified personnel, using the air purges and materials that are suitable for the products.

Charging and removing heat exchange fluids should be done with devices that must be included on the water circuit by the installer. Never use the unit heat exchangers to add heat exchange fluid.

7.2 - Victaulic water connections

Inlet/outlet diameters without hydronic module

30XAS		242-482
Standard		
Diameter	in	5
Outside diameter	mm	141.3

Inlet/outlet diameters with hydronic module (option)

30XAS (option 116)		242-482
Diameter	in	4
Outside diameter	mm	114.3
Expansion tank volume	l	50
Max. operating pressure	kPa	400

7.3 - Flow control

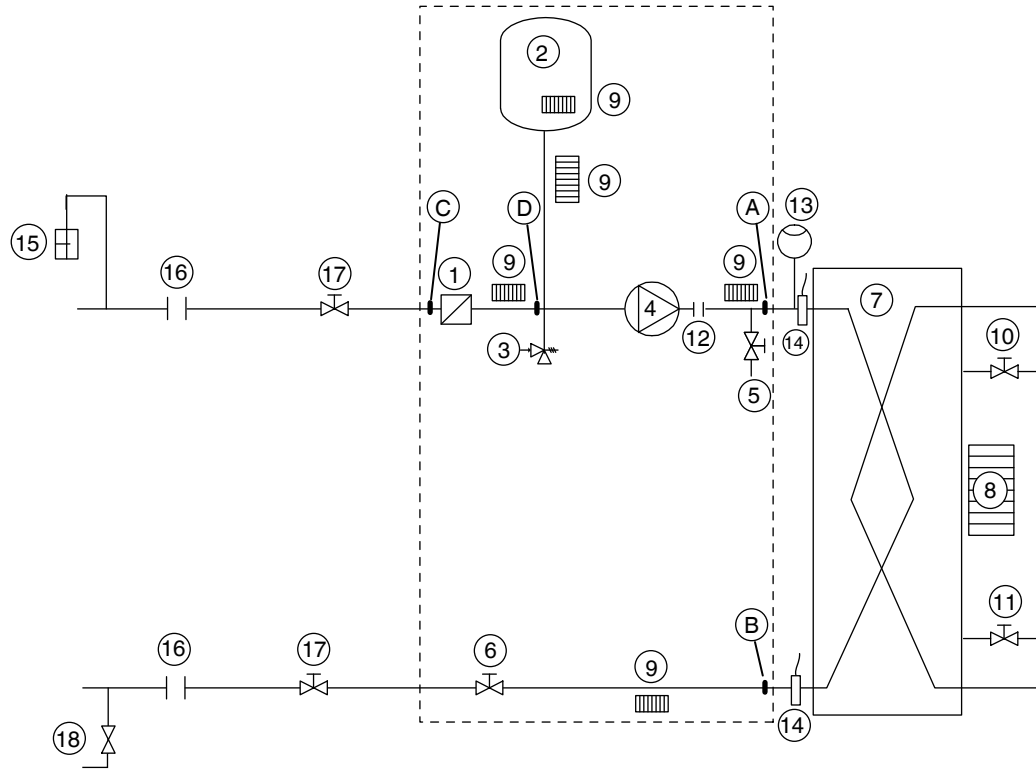
Evaporator flow switch and chilled water pump interlock

IMPORTANT: On 30XAS units, the unit water flow switch must be energised, and the chilled water pump interlock must be connected. Failure to follow this instruction will void the Carrier guarantee.

The water flow switch is installed on the evaporator water inlet and adjusted by the control, based on unit size and application. If adjustment is necessary, it must be carried out by qualified personnel trained by Carrier Service.

Terminals 34 and 35 are provided for field installation of the chilled water pump interlock (auxiliary contact for pump operation to be wired on site).

Typical water circuit diagram



Legend

Components of the unit and hydronic module

- A Pressure sensor (A-B = ΔP evaporator)
- B Pressure sensor
- C Pressure sensor (C-D = ΔP water filter)
- D Pressure sensor
- 1 Victaulic screen filter
- 2 Expansion tank
- 3 Safety valve
- 4 Available pressure pump
- 5 Drain valve
- 6 Flow control valve
- 7 Evaporator
- 8 Evaporator defrost heater (option)
- 9 Hydronic module defrost heater (option)

- 10 Air vent (evaporator)
- 11 Water drain (evaporator)
- 12 Expansion compensator (flexible connections)
- 13 Flow switch
- 14 Water temperature sensor
- 15 Air vent

Installation components (supplied by the customer)

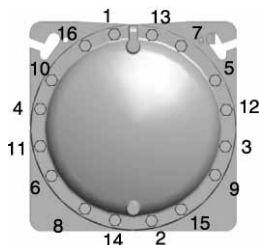
- 16 Flexible connection
- 17 Shut-off valve
- 18 Charge valve

--- Hydronic module (supplied as an option)

7.4 - Evaporator water box bolt tightening

The evaporator (and condenser) are of the shell and tube type with removable water boxes to facilitate cleaning. Re-tightening or tightening must be done in accordance with the illustration below.

Water box tightening sequence



Legend

Tightening torque
Bolt size M16 - 171 - 210 Nm

- Sequence 1: 1, 2, 3, 4
- Sequence 2: 5, 6, 7, 8
- Sequence 3: 9, 10, 11, 12
- Sequence 4: 13, 14, 15, 16

NOTE: Before this operation we recommend draining the circuit and disconnecting the pipes to be sure that the bolts are correctly and uniformly tightened.

7.5 - Frost protection

7.5.1 - Standard machine

If the chiller or the water piping is in an area where the ambient temperature can fall below 0°C it is recommended to add an antifreeze solution to protect the unit and the water piping to a temperature of 10 K below the lowest temperature likely to be reached at the installation site. Use only antifreeze solutions, approved for heat exchanger duty. If the system is not protected by an antifreeze solution and will not be used during the freezing weather conditions, draining of the cooler and outdoor piping is mandatory. Damage due to freezing is not covered by the warranty.

IMPORTANT: Depending on the climatic conditions in your area you must:

- Add ethylene glycol with an adequate concentration to protect the installation up to a temperature of 10 K below the lowest temperature likely to occur at the installation site.
- If the unit is not used for an extended period, it is recommended to drain it, and as a safety precaution add ethylene glycol to the heat exchanger, using the water entering purge valve connection (a purge connection is available somewhere on the heat exchanger water box in case the machine is not perfectly level).

- *At the start of the next season, refill the unit with water and add an inhibitor.*
- *For the installation of auxiliary equipment, the installer must comply with basic regulations, especially for minimum and maximum flow rates, which must be between the values listed in the operating limit table (application data).*

7.5.2 - Optional evaporator frost protection (30XAS)

If it is not possible to apply the recommendations in paragraph 7.5.1, the units can be equipped with heaters to protect the evaporator against frost (option 41A or 41B).

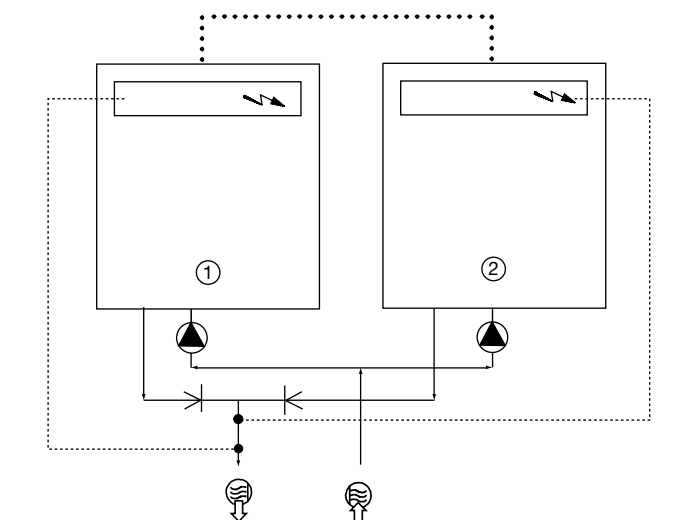
7.6 - Operation of two units in master/slave mode (option 58)

The control of a master/slave assembly is in the entering water and does not require any additional sensors (standard configuration). It can also be located in the leaving water. In this case two additional sensors must be added on the common piping.

All parameters, required for the master/slave function must be configured using the Service Configuration menu. All remote controls of the master/slave assembly (start/stop, set point, load shedding etc.) are controlled by the unit configured as master and must only be applied to the master unit.

Each unit controls its own water pump. If there is only one common pump, in cases with variable flow, isolation valves must be installed on each unit. They will be activated at the opening and closing by the control of each unit (in this case the valves are controlled using the dedicated water pump outputs). See the 30XA/30XAS/30XW Pro-Dialog control manual for a more detailed explanation.

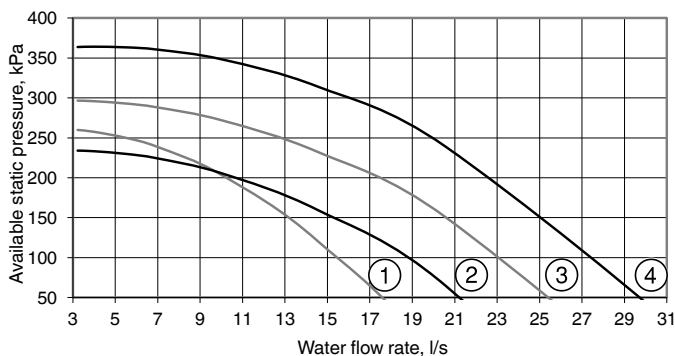
30XAS with configuration: leaving water control



- Legend**
- 1 Master unit
 - Slave unit
 - Control boxes of the master and slave units
 - Water inlet
 - Water outlet
 - Water pumps for each unit (included as standard for units with hydronic module)
 - Additional sensors for leaving water control, to be connected to channel 1 of the slave boards of each master and slave unit
 - CCM communication bus
 - Connection of two additional sensors

7.7 - Pump characteristics

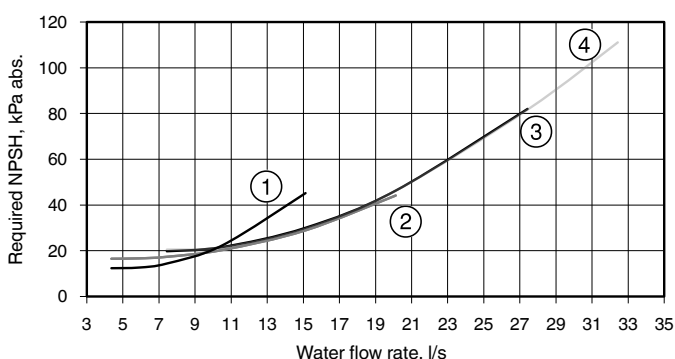
7.7.1 - Available static system pressure (option 116C: hydronic module)



- Legend**
- 1 30XAS 282
 - 2 30XAS 342
 - 3 30XAS 442
 - 4 30XAS 482

7.7.2 - NPSH (Net Positive Suction Head) required (option 116C: hydronic module)

Size the hydronic circuit to ensure that the NPSH (Net Positive Suction Head) is higher or equal to the required NPSH + 50 kPa.



- Legend**
- 1 30XAS 282
 - 2 30XAS 342
 - 3 30XAS 442
 - 4 30XAS 482

8 - HEAT RECLAIM CONDENSER OPTION (OPTION 50)

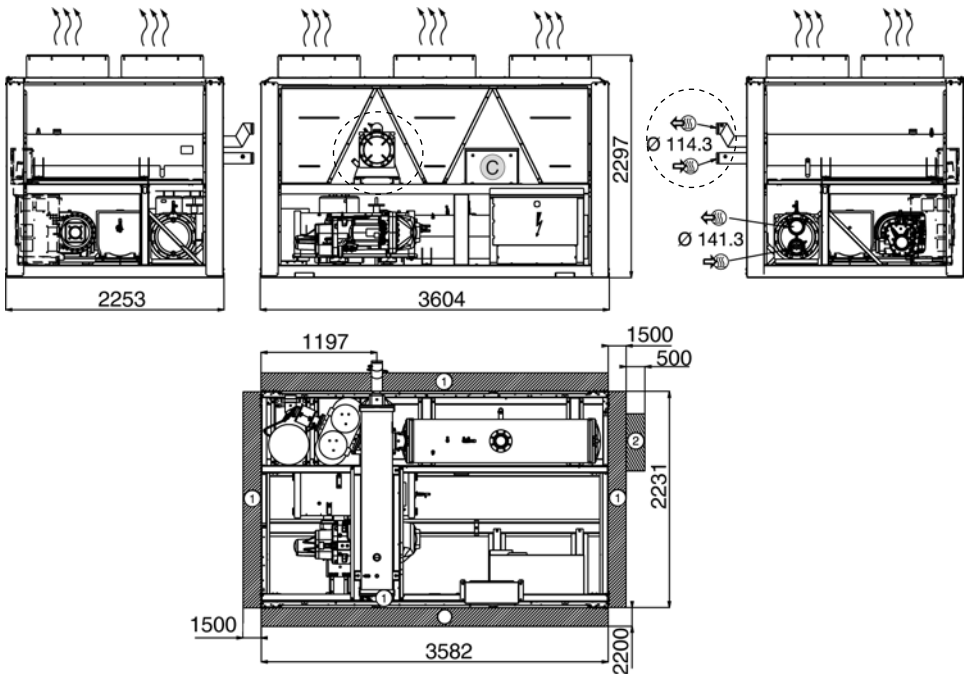
8.1 - Technical data, 30XAS units with heat reclaim condenser option

30XAS heat reclaim mode		282	342	442	482
Operating weight*	kg	3260	3320	4190	4280
Refrigerant charge	kg	73	78	90	95
Heat reclaim condenser		Flooded multi-pipe condenser			
Water volume	l	55	55	68	68
Water connections		Type Victaulic			
Nominal diameter	in	4	4	4	4
Actual outside diameter	mm	114.3	114.3	114.3	114.3

* Weights are for guidance only

8.2 - Dimensions, clearances

8.2.1 - 30XAS 282- 342 – heat reclaim option (option 50)



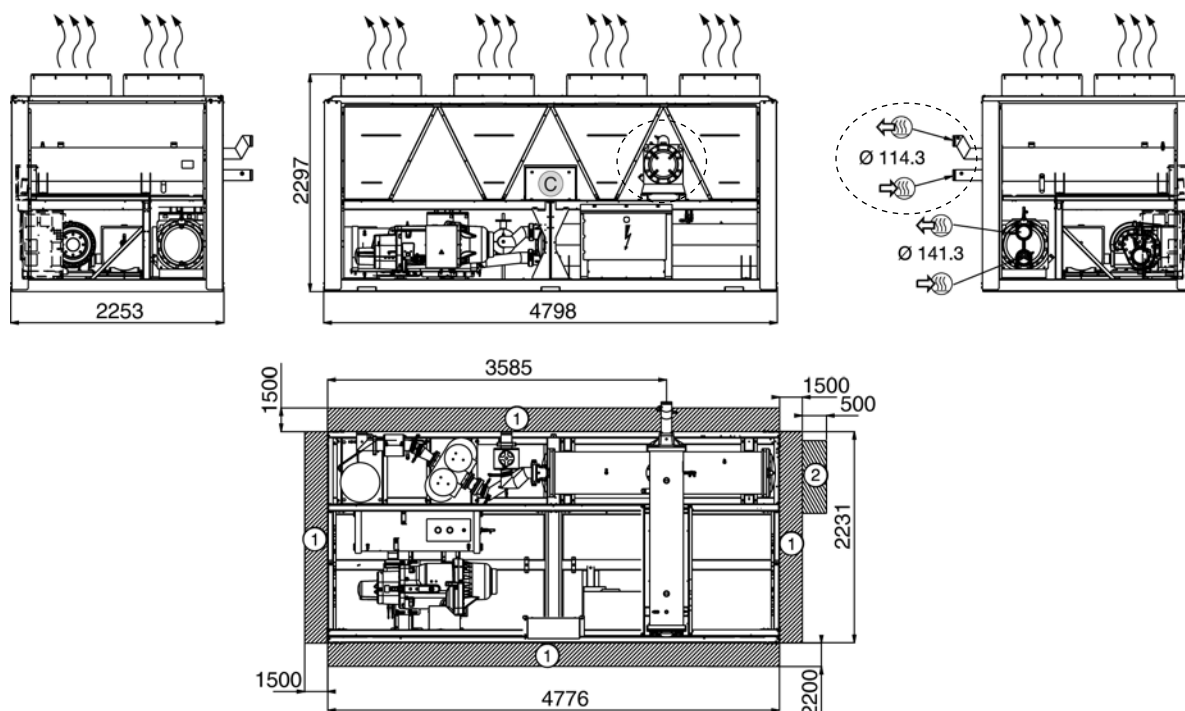
- Legend:**
All dimensions are given in mm.
- Specific elements for option 50
 - Required clearances for maintenance and air flow
 - Recommended space for evaporator tube removal
 - Water inlet
 - Water outlet
 - Air outlet – do not obstruct
 - Power supply connection
 - Control circuit connection
 - Heat reclaim condenser

ATTENTION: The condenser connection sleeves are not installed, but supplied with the unit. The sealing joints are in the control box. The temperature sensors and the condenser flow switch are wired and fixed in the machine. They must be installed as described in chapter 8.4 “Condenser water connections”.

NOTE: Drawings are not contractually binding. Before designing an installation, consult the certified dimensional drawings supplied with the unit or available on request.


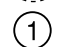
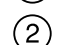


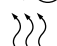


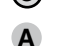
For the positioning of the fixing points, weight distribution and centre of gravity coordinates please refer to the dimensional drawings.

8.2.2 - 30XAS 442-482 – heat reclaim option (option 50)



Legend:

All dimensions are given in mm.

-  Specific elements for option 50
-  Required clearances for maintenance and air flow
-  Recommended space for evaporator tube removal
-  Water inlet
-  Water outlet
-  Air outlet – do not obstruct
-  Power supply connection
-  Control circuit connection
-  Heat reclaim condenser

ATTENTION: The condenser connection sleeves are not installed, but supplied with the unit. The sealing joints are in the control box. The temperature sensors and the condenser flow switch are wired and fixed in the machine. They must be installed as described in chapter 8.4 “Condenser water connections”.

NOTE: Drawings are not contractually binding. Before designing an installation, consult the certified dimensional drawings supplied with the unit or available on request.

For the positioning of the fixing points, weight distribution and centre of gravity coordinates please refer to the dimensional drawings.

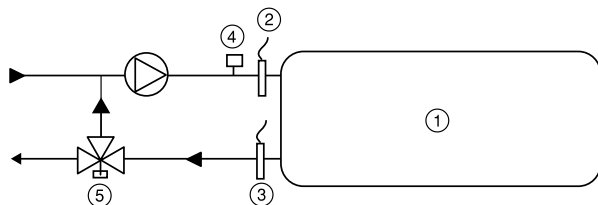
8.3 - Condenser location

The heat reclaim condenser is located between the air-cooled condensers on the upper part of the chassis, supported by two cross rails. The water inlet and outlet are on the same side.

8.4 - Condenser water connections

8.4.1 - Connection diagram

The water flow switch must be installed at the water inlet of the installation that arrives at the heat reclaim condenser.



Legend

- 1 Heat reclaim condenser
- 2 Entering water temperature sensor (supplied)
- 3 Leaving water temperature sensor (supplied)
- 4 Condenser water flow switch (supplied)
- 5 Three-way valve (not supplied)

8.4.2 - Three-way valves

It is strongly recommended to install a three-way valve in the system (not supplied with the unit). A 0-10 V output is available on the unit electronic board to control this valve. The valve allows bypassing of the heat reclaim condenser entering/leaving circuit to ensure unit operation with heat reclaim at low entering water temperature ($< 12.5^{\circ}\text{C}$). It also ensures an optimal and controlled leaving water temperature.

8.5 - Operating limits for stable operation (no mode changeover)

8.5.1 - Cooling only mode

Please refer to the earlier chapters in this manual:

- Unit operating range
- Evaporator water flow rate

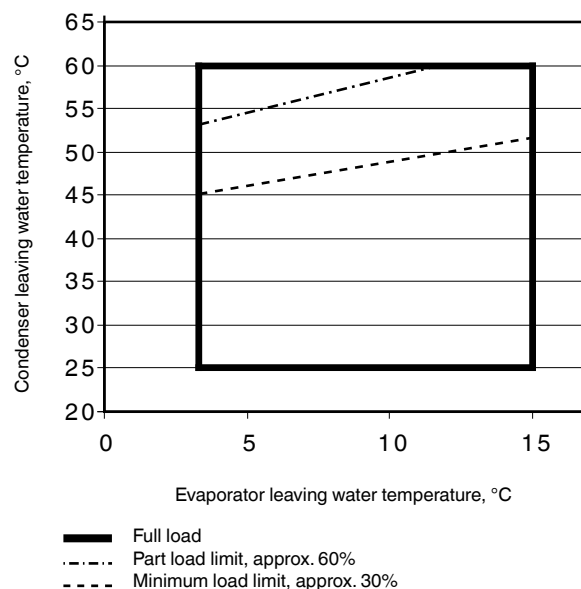
8.5.2 - Heat reclaim mode

Condenser water temperature, $^{\circ}\text{C}$	Minimum	Maximum
Water entering temperature at start-up	12.5*	55
Water entering temperature during operation	20	55
Water leaving temperature during operation	25	60
Evaporator water temperature, $^{\circ}\text{C}$	Minimum	Maximum
Water entering temperature at start-up	-	45
Water entering temperature during operation	6.8	21
Water leaving temperature during operation	3.3	15

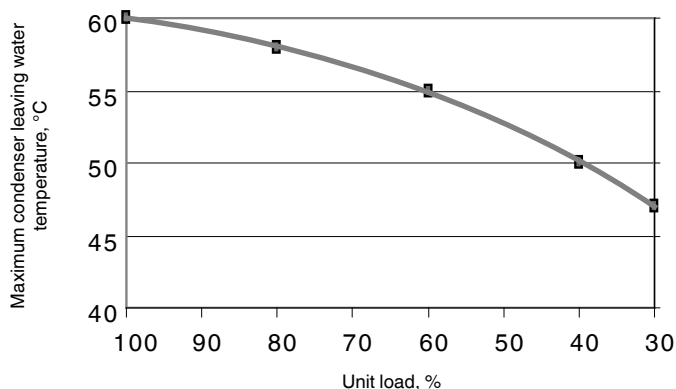
* The water entering temperature at start-up must not be lower than 12.5°C . For installations with a lower temperature a three-way valve must be used.

NOTE: If the temperature at the evaporator is below 4°C , a glycol/water solution or the frost protection option must be used.

In part-load operation, the limitation of the condenser leaving water temperature is due to the operating range of the screw compressor. If the condenser leaving water temperature is above the limit value given in the curves below, the unit will automatically change over to the mode without heat recovery:



Part load operating limits (evaporator leaving water temperature = 7°C)



8.6 - Operating limits for changeover between modes

From cooling only to heat reclaim and vice versa.

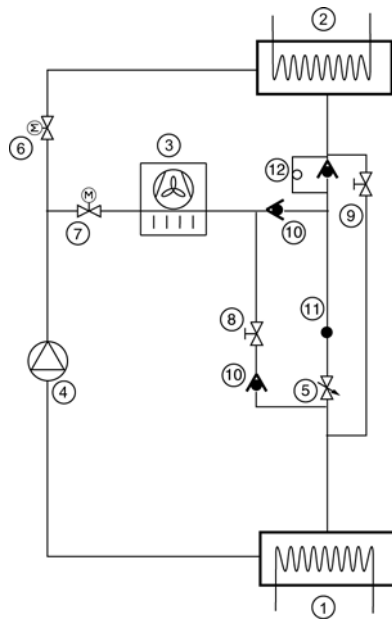
Heat reclaim condenser water temperature, $^{\circ}\text{C}$	Minimum	Maximum
Water entering temperature	12.5	57.5
Ambient operating temperature	-10*	45

* -20°C with winter operation option (option 28)

8.7 - Flow control

The water flow switch supplied needs to be installed at the heat reclaim condenser water inlet and protects the condenser loop against low water flow conditions. When the heat reclaim mode is required, a signal from the additional board output activates the system pump. Once the pump is started, flow detection takes place for one minute. If no flow is detected by the end of this time:

1. changeover to the heat reclaim mode is not permitted
2. mode is changed to cooling only mode when the water flow rate is low, accompanied by a water flow detection alarm.



Legend

- 1 Evaporator
- 2 Heat reclaim condenser
- 3 Air condenser (coils)
- 4 Compressor
- 5 Expansion device (EXV)
- 6 Motorised valve - heat reclaim mode
- 7 Motorised valve - cooling only mode
- 8 Solenoid valve - charge recovery in heat reclaim mode
- 9 Solenoid valve - charge recovery in cooling only mode
- 10 Check valve
- 11 Pressure and temperature measurement to calculate the liquid sub-cooling to optimise the charge recovery
- 12 Check valve with capillary

8.8 - Heat reclaim operation

Changeover from one mode to the other (changeover from heat exchange at the air condenser to heat exchange at the water condenser and vice versa) is ensured by motorised two-way valves located upstream of the air and water condensers.

ATTENTION: Mode changes may lead to higher sound levels than the levels at stable operation.

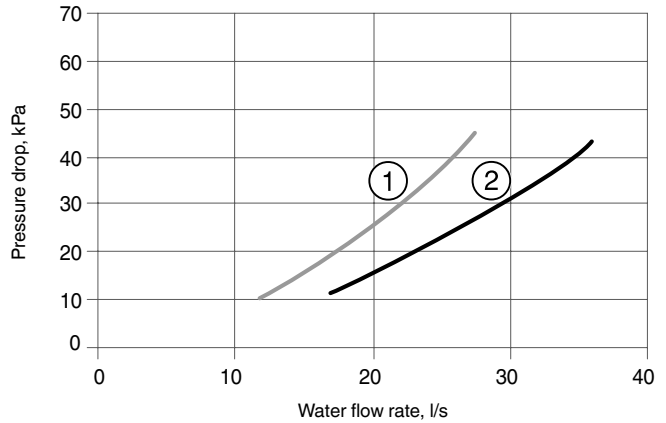
If the heat reclaim mode has been selected, the logic compares the condenser water entering temperature with the setpoint. Depending on this difference the unit is either activated or deactivated in heat reclaim mode, maintaining a deadband that is centred on the setpoint.

The deadband of 5 K is controlled by default. For more details on the heat reclaim operation logic please refer to the 30XAS control manual in chapter “Heat reclaim module option”.

8.9 - Condenser pump selection

Heat reclaim condenser water flow rate/pressure drop

Heat reclaim condenser pressure drop in water flow rate function



- 1 Condenser 12" (water volume = 55 litres)
- 2 Condenser 14" (water volume = 68 litres)

For units with a water condenser please refer to chapter 8.1.

8.10 - Frost protection

The heat reclaim condenser is equipped with electric heaters to protect the condenser against frost. These are activated if the condenser entering and leaving water temperatures are below 3°C and deactivated, if they are higher than 4.4°C.

9 - MAJOR SYSTEM COMPONENTS AND OPERATION DATA

9.1 - Direct-drive twin-screw compressor with variable capacity slide valve

- 30XAS units use the 06T geared twin-screw compressor equipped with a variable capacity slide valve for continuous control between 30% and 100% of full load.
- Nominal capacities range from 235 to 484 kW. The five models used in the 30XAS range are economised.

9.1.1 - Oil filter

The 06T screw compressor has an independent oil filter attached to the oil separator. This filter is field replaceable.

9.1.2 - Refrigerant

The 30XAS is a water chiller operating only with refrigerant R-134a.

9.1.3 - Lubricant

The 06T screw compressor is approved for use with the following lubricants:

- Castrol Icematic SW220 (Carrier specification PP47-32)
- Lubrizol Emkarate RL220H (Carrier specification PP47-13)

9.1.4 - Oil supply solenoid valve

An oil supply solenoid valve is installed on the oil return line as standard to isolate the compressor from oil flow when the compressor is not operating. The oil solenoid valve is field replaceable.

9.1.5 - Suction and economizer screens

To increase the reliability of the compressor, a screen has been incorporated as a standard feature into suction and economizer inlets of the compressor.

9.1.6 - Capacity control system

The 06T screw compressor has an unloading system that is standard on all compressors. This unloading system consists of slide valve that permits changing the length of the screw used for the refrigerant compression. This valve is controlled by the action of a piston controlled by two solenoid valves on the oil return line.

9.2 - Pressure vessels

General

Monitoring during operation, re-qualification, re-testing and re-testing dispensation:

- Follow the regulations on monitoring pressurised equipment.
- It is normally required that the user or operator sets up and maintains a monitoring and maintenance file.
- Follow the control programmes of EN 378, annexes A, B, C and D.
- If they exist follow local professional recommendations.
- Regularly inspect the condition of the coating (paint) to detect blistering resulting from corrosion. To do this, check a non-insulated section of the container or the rust formation at the insulation joints.

- Regularly check for possible presence of impurities (e.g. silicon grains) in the heat exchange fluids. These impurities maybe the cause of the wear or corrosion by puncture.
- Filter the heat exchange fluid check and carry out internal inspections as described in EN 378, annex C.
- In case of re-testing please refer to the maximum operating pressure given on the unit nameplate.
- The reports of periodical checks by the user or operator must be included in the supervision and maintenance file.

Repair

Any repair or modification, including the replacement of moving parts:

- must follow local regulations and be made by qualified operators and in accordance with qualified procedures, including changing the heat exchanger tubes.
- must be made in accordance with the instructions of the original manufacturer. Repair and modification that necessitate permanent assembly (soldering, welding, expanding etc.) must be made using the correct procedures and by qualified operators.
- An indication of any modification or repair must be shown in the monitoring and maintenance file.

Recycling

The unit is wholly or partly recyclable. After use it contains refrigerant vapours and oil residue. It is coated by paint.

Operating life

This unit is designed for:

- prolonged storage of 15 years under nitrogen charge with a temperature difference of 20 K per day.
- 452000 cycles (start-ups) with a maximum difference of 6 K between two neighbouring points in the vessel, based on 6 start-ups per hour over 15 years at a usage rate of 57%.

Corrosion allowances

Gas side: 0 mm

Heat exchange fluid side: 1 mm for tubular plates in lightly alloyed steels, 0 mm for stainless steel plates or plates with copper-nickel or stainless steel protection.

9.2.1 - Evaporator

30XAS chillers use a flooded shell-and-tube evaporator. The water circulates in the tubes and the refrigerant is on the outside in the shell. The tubes are 3/4" diameter copper with an enhanced surface inside and out. There is just one water circuit with two water passes.

The evaporator has a thermal insulation of 19 mm thick polyurethane foam, an aluminium sheet (option) and is equipped with water drain and purge. It has been tested and stamped in accordance with applicable pressure codes for a maximum operating pressure of 2100 kPa refrigerant-side and 1000 kPa water-side.

The water connection of the heat exchanger is a Victaulic connection. As an option the evaporator is available with frost protection (evaporator frost protection option).

The products that may be added for thermal insulation of the containers during the water piping connection procedure must be chemically neutral in relation to the materials and coatings to which they are applied. This is also the case for the products originally supplied by Carrier.

9.2.2 - Oil separator

In these units, the oil separator is a pressure vessel that is mounted under the outside vertical condenser coils. Discharge gas at the compressor outlet is directed towards the bottom of the oil separator ring and most of the oil separates from the gas by strong deceleration and by gravity. The gas then flows through a wire mesh screen where the remaining oil is separated by coalescence and flows to the bottom of the ring. The gas is now free from oil and leaves the ring at the top towards the condenser.

9.2.3 - Economiser function

The economiser function includes a liquid line valve, a filter drier, two EXVs, a plate heat exchanger as well as protection devices (fuse or valve).

At the condenser outlet a part of the liquid is expanded via the secondary EXV in one of the heat exchanger circuits and then returns as gas at the compressor economiser. This expansion permits increase of the liquid sub-cooling of the rest of the flow that penetrates the evaporator via the principal EXV. This permits increasing the cooling capacity of the system as well as its efficiency.

9.3 - Control and safety

9.3.1 - High-pressure safety switches

30XAS units are equipped with high-pressure safety switches.

The high-pressure switch with manual reset, called PZH (former DBK), is backed up by a high-pressure switch that requires resetting with a tool. The high-pressure switch that requires resetting with a tool is called PZHH (former SDBK). If a PZHH cuts out, the corresponding PZH in the same compressor is faulty and must be replaced. The PZHH must be reset with a blunt tool with a diameter of less than 6 mm. Insert this tool into the opening on the pressure switch and push the reset button in this location.

These pressure switches are located at the discharge of each compressor.

9.3.2 - Safety valves

30XAS units are equipped with dual safety valves on the high and low pressure side as standard, with a three-way valve to facilitate their replacement.

9.4 - Condensers

The 30XAS coils are micro-channel condensers made entirely of aluminium. Optional coils with internally grooved copper tubes with aluminium fins are also available (options 254 and 255).

9.5 - Fans

The fans are axial Flying Bird fans equipped with rotating shroud and made of composite recyclable material. Each motor is fixed with transverse supports. The motors are three-phase, with permanently lubricated bearings and insulation class F.

9.6 - Electronic expansion valve (EXV)

The EXV is equipped with a stepper motor (2785 to 3690 steps, depending on the model) that is controlled via the EXV board. The EXV is also equipped with a sightglass that permits verification of the mechanism movement and the presence of the liquid gasket.

9.7 - Moisture indicator

Located on the EXV, permits control of the unit charge and indicates moisture in the circuit. The presence of bubbles in the sight-glass indicates an insufficient charge or non-condensables in the system. The presence of moisture changes the colour of the indicator paper in the sight-glass.

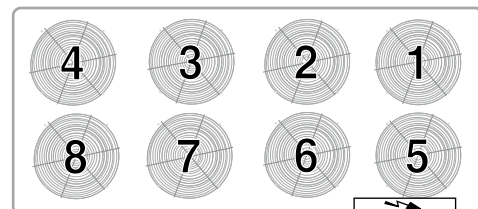
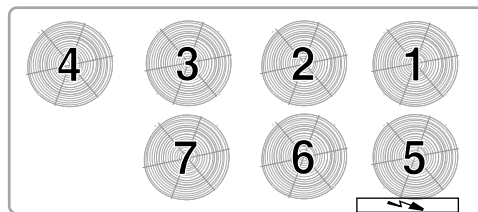
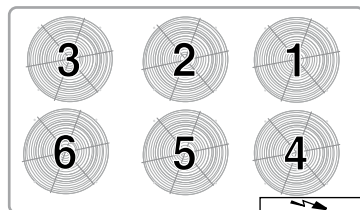
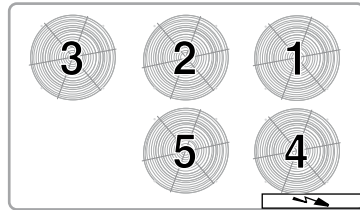
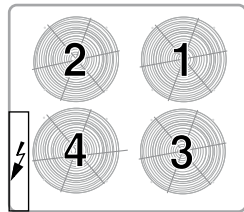
9.8 - Filter drier

The role of the filter drier is to keep the circuit clean and moisture-free. The moisture indicator shows, when it is necessary to change the element. A difference in temperature between the filter inlet and outlet shows that the element is dirty.

9.9 - Sensors

The units use thermistors to measure the temperature, and pressure transducers to control and regulate system operation (refer to the 30XA/30XAS/30XW Pro-Dialog control manual for a more detailed explanation).

30XAS fan arrangement



x = Start-up order



Power connection

NOTE: The values above do not correspond to the fan designation. The fan designation and position are given on the unit drawings and wiring diagrams supplied with the unit.

10 - MAIN OPTIONS

Options	No.	Description	Advantages	Use
Corrosion protection, traditional coils (for the Middle East only)	2B	Factory application of Blygold Polual treatment on the copper/aluminium coils	Improved corrosion resistance, recommended for industrial, rural and marine environments	30XAS 242-482
Corrosion protection, traditional coils (for the Middle East only)	3A	Fins made of pre-treated aluminium (polyurethane and epoxy)	Improved corrosion resistance, recommended for moderate marine and urban environments	30XAS 242-482
Unit equipped for air discharge ducting	10	Fans with available pressure equipped with discharge connection flanges	Facilitates connection to the discharge ducts	30XAS 242-482
IP 54 control box	20A	Increased leak tightness of control boxes	Increased control box protection	30XAS 242-482
Grilles	23	Metal grilles on the unit front, rear and sides	Enhanced aesthetics, protection against intrusion to the unit interior	30XAS 242-482
Enclosure panels	23A	Side panels at each end of the coil	Enhanced aesthetics	30XAS 242-482
Winter operation	28	Fan speed control via frequency converter	Stable unit operation when the air temperature is between -10°C and -20°C	30XAS 242-482
Evaporator frost protection	41A	Resistance heater on the evaporator	Evaporator frost protection down to -20°C outside temperature	30XAS 242-482
Evaporator and hydronic module frost protection	41B	Resistance heater on the evaporator and the hydronic module	Evaporator and hydronic module frost protection down to -20°C outside temperature	30XAS 282-482
Heat reclaim	50	Complete recovery of the heat rejected by the condenser	Free hot-water production as well as cold-water production	30XAS 242-482
Master/slave operation	58	Additional leaving water temperature sensor kit for on-site installation, permitting master/slave operation of two chillers connected in parallel.	Optimised operation of two chillers connected in parallel with operating time balancing.	30XAS 242-482
Service valve	92	Shut-off valves on the compressor suction piping, the economiser line, the compressor discharge piping and at the evaporator inlet	Simplified maintenance	30XAS 242-482
Discharge valve	93A	Shut-off valves on the compressor discharge piping	Simplified maintenance	30XAS 242-482
High-pressure dual-pump hydronic module	116C	See hydronic module chapter	Easy and fast installation, operating safety	30XAS 282-482
High energy efficiency	119	Improved condenser performance	Energy cost reduction, full load operation at higher air temperatures	30XAS 242-482
JBus gateway	148B	Two-directional communications board, complies with JBus protocol	Easy connection by communication bus to a building management system	30XAS 242-482
BacNet gateway	148C	Two-directional communications board, complies with BacNet protocol	Easy connection by communication bus to a building management system	30XAS 242-482
LON gateway	148D	Two-directional communications board, complies with LON protocol	Easy connection by communication bus to a building management system	30XAS 242-482
Energy Management Module EMM	156	See chapter "Energy Management Module"	Easy connection by wired connection to a building management system	30XAS 242-482
Russian code compliance	199	GOST certification	Conformance with Russian regulations (GOST)	30XAS 242-482
Australian code compliance	200	Pressure vessels approved in accordance with the Australian code	Conformance with Australian regulations	30XAS 242-482
Traditional coils (Cu/Al) (for the Middle East only)	254	Coils made of copper tubes with aluminium fins	Possibility to add specialised condenser treatment	30XAS 242-482
Traditional coils (Cu/Al) without slots (for the Middle East only)	255	Coils made of copper tubes with aluminium fins without slots	Possibility to add specialised condenser treatment.	30XAS 242-482
Suction piping insulation	256	Thermal insulation of the suction piping with flexible, anti-UV insulant	Prevents condensation on the suction piping	30XAS 242-482
Low sound level	257	Compressor sound enclosure and sound insulation of main noise sources	Reduced sound emissions	30XAS 242-482
Very low sound level	258	Compressor sound enclosure and enhanced sound insulation of main noise sources	Reduced sound emissions	30XAS 242-482
MCHE anti-corrosion protection	263	Carrier factory treatment of the MCHE heat exchanger for applications in aggressive environments	The Super Enviro-Shield option was developed to extend the application range of MCHE heat exchangers in severe environmental conditions: this option is compulsory in industrial and coastal environments.	30XAS 242-482
Welded Victaulic evaporator water connection	266	Piping to be welded with Victaulic connection	Ease-of-installation	30XAS 242-482
Remote interface	275	Remotely installed user interface (communication bus)	Remote chiller control up to 300 m	30XAS 242-482
Compressor enclosure	279	Compressor sound enclosure	Reduced sound emissions	30XAS 242-482
Evaporator with aluminium jacket	281	Evaporator aluminium sheet for thermal insulation protection.	Improved resistance to aggressive climate conditions	30XAS 242-482

11 - STANDARD MAINTENANCE

Air conditioning equipment must be maintained by professional technicians, whilst routine checks can be carried out locally by specialised technicians.

Simple preventive maintenance will allow you to get the best performance from your HVAC unit:

- improved cooling performance
- reduced power consumption
- prevention of accidental component failure
- prevention of major time-consuming and costly interventions
- protection of the environment

There are five maintenance levels for HVAC units, as defined by the AFNOR X60-010 standard.

11.1 - Level 1 maintenance (see note)

Simple procedure can be carried out by the user:

- Visual inspection for oil traces (sign of a refrigerant leak)
- Air heat exchanger (condenser) cleaning - see chapter "Condenser coil - level 1"
- Check for removed protection devices, and badly closed doors/covers
- Check the unit alarm report when the unit does not work (see report in the 30XA/30XAS/30XW Pro-Dialog control manual).

General visual inspection for any signs of deterioration.

11.2 - Level 2 maintenance (see note)

This level requires specific know-how in the electrical, hydronic and mechanical fields. It is possible that these skills are available locally: existence of a maintenance service, industrial site, specialised subcontractor.

In these cases, the following maintenance operations are recommended.

Carry out all level 1 operations, then:

- At least once a year tighten the power circuit electrical connections (see tightening torques table).
- Check and re-tighten all control/command connections, if required (see tightening torques table).
- Remove the dust and clean the interior of the control boxes, if required.
- Check the presence and the condition of the electrical protection devices.
- Check the correct operation of all heaters.
- Replace the fuses every 3 years or every 15000 hours (age-hardening).
- Replace the control box cooling fans used with option 22 (with designation EF22_) every five years.
- Check the height of the anti-vibration mountings (located between the compressor rails and the unit chassis) after 5 years of operation, and then each year. When the total minimum height of the mountings is less than 28 mm replace the mountings.

- Check the water connections.
- Purge the water circuit (see chapter "Water flow control procedure").
- Clean the water filter (see chapter "Water flow control procedure").
- Fully clean the condensers with a low-pressure jet and a bio-degradable cleaner (counter-current cleaning - see chapter "Condenser coil - level 2").
- Replace the stuffing box packing of the pump after 10000 hours of operation.
- Check the unit operating parameters and compare them with previous values.
- Keep and maintain a maintenance sheet, attached to each HVAC unit.

All these operations require strict observation of adequate safety measures: individual protection garments, compliance with all industry regulations, compliance with applicable local regulations and using common sense.

11.3 - Level 3 (or higher) maintenance (see note)

The maintenance at this level requires specific skills/ approval/tools and know-how and only the manufacturer, his representative or authorised agent are permitted to carry out these operations. These maintenance operations concern for example:

- A major component replacement (compressor, evaporator)
- Any intervention on the refrigerant circuit (handling refrigerant)
- Changing of parameters set at the factory (application change)
- Removal or dismantling of the HVAC unit
- Any intervention due to a missed established maintenance operation
- Any intervention covered by the warranty

NOTE: Any deviation or non-observation of these maintenance criteria will render the guarantee conditions for the HVAC unit nul and void, and the manufacturer, Carrier France, will no longer be held responsible.

11.4 - Tightening torques for the main electrical connections

Component	Designation in the unit	Value (N·m)
Screw on bus bar, customer connection		
M8	-	18
M10	L1/L2/L3	30
Soldered screw PE, customer connection (M12)		
PE		70
Tunnel terminal screw, compressor contactor		
Contacteur 3RT104_		5
Contacteur 3RT105_		11
Contacteur 3RT106_	KM_	21
Tunnel terminal screw, current transformer		
Size 2 (3RB2956_)		11
Compressor earth terminal in the power wiring control box		
Terminal M8	Gnd	30
Compressor phase connection terminals M12		
1/2/3/4/5/6 on EC_		25
Compressor earth connection		
Gnd on EC_		25
Tunnel terminal screw, disconnects 3RV1011_		
QF_/QM_		1
Tunnel terminal screw, hydronic pump contactor		
Contacteur 3RT101_	KM90_	1
Contacteur 3RT102_		2.2

11.5 - Tightening torques for the main bolts and screws

Screw type	Used for	Value (N·m)
Metal screw D=4.8	Condensing module, housing supports	4.2
Screw H M8	Condensing module, compressor fixing	18
Tapitite screw M10	Condensing module, chassis - structure fixing, control box fixings, compressor fixings, oil separator fixing	30
Tapitite screw M6	Piping support, cowling	7
Screw H M8	Piping clip	12
Screw H M6	Piping clip	10
Nut H M10	Compressor chassis	30
Nut H M10	Hydronic pump chassis	30
Screw H M8	Filter drier cover	40
Screw H M12	Economiser port flange	40
Screw H M16	Oil separator flanges, suction flanges	110
Screw H M16	Heat exchanger water boxes	190
Screw H M20	Suction flanges	190
Nut 5/8 ORFS	Oil line	65
Nut 3/8 ORFS	Oil line	26

11.6 - Condenser coil

We recommend, that finned coils are inspected regularly to check the degree of fouling. This depends on the environment where the unit is installed, and will be worse in urban and industrial installations and near trees that shed their leaves.

For coil cleaning, two maintenance levels are used, based on the AFNOR X60-010 standard:

Level 1

Recommendations for maintenance and cleaning of round tube plate fin (RTPF) condenser coils:

- Regular cleaning of the coil surface is essential for correct unit operation. Eliminating contamination and removal of harmful residue will increase the operating life of the coils and the unit.
- The maintenance and cleaning procedures below are part of the regular maintenance and will prolong the life of the coils.

Removal of fibres that obstruct the surfaces:

Fibres and dirt collected on the coil surface must be removed with a vacuum cleaner. If you do not have a vacuum cleaner, a soft brush with non-metallic bristles can be used instead. In all cases cleaning must be done in the direction of the fins, as the coil surface is easily damaged. The fins bend easily and damage the protective coating of the coil, if cleaning is done at right angles to the fins.

NOTE: Using a water jet from a spray hose on a polluted surface will result in fibres and dirt becoming trapped in the coil, making cleaning more difficult. All fibres and dirt must be removed from the surface, before using a low-speed rinsing jet.

Periodical cleaning with clean water:

For coils installed in a coastal or industrial environment periodical cleaning by rinsing with water is beneficial. It is however essential that rinsing is done with a low-speed water jet to avoid damaging the fins. Monthly cleaning as described below is recommended.

ATTENTION

- **Chemical cleaning agents, water containing bleach, acidic or basic cleaning agents must never be used to clean the coil exterior or interior. These cleaning agents may be difficult to rinse off and can accelerate corrosion at the joint between tube and fins, where two different materials come into contact. If dirt on the coil surface persists, use a Totaline coil cleaner as described above.**
- **High-speed water from a high-pressure cleaner, spray hose or compressed air cleaner must never be used for coil cleaning. The force of the water or air jet will bend the fins and increase the air-side pressure drop. This can result in reduced performance or nuisance shutdowns of the unit.**

Recommendations for maintenance and cleaning of MCHE (microchannel) condenser coils:

- Regular cleaning of the coil surface is essential for correct unit operation. Eliminating contamination and removal of harmful residue will increase the operating life of the coils and the unit.
- The maintenance and cleaning procedures below are part of the regular maintenance and will prolong the life of the coils.

ATTENTION: Do not use chemical cleaners on MCHE condenser coils. These cleaning agents can accelerate corrosion and damage the coils.

- Remove foreign objects and debris attached to the coil surface or wedged between the chassis and the supports.
- Provide personal protection equipment including safety glasses and/or a face mask, waterproof clothing and safety gloves. It is recommended to wear clothing that covers the whole body.
- Start the high-pressure spray gun and remove any soap or industrial cleaner from it before cleaning the condenser coils. Only drinkable cleaning water is permitted to clean the condenser coils.
- Clean the condenser face by spraying the coil evenly and in a stable manner from bottom to top, directing the water jet at right angles to the coil. Do not exceed 62 bar or an angle of 45° related to the coil. The diffuser must be at least 300 mm away from the coil surface. It is essential to control the pressure and to be careful not to damage the fins.

ATTENTION: Excessive water pressure can break the weld points between the fins and the flat MCHE microchannel tubes.

Level 2

The two cleaning products can be used for any of the following coil finishes: Cu/Cu, Cu/Al, with Polual, Blygold and/or Heresite protection.

Clean the coil, using appropriate products. We recommend TOTALINE products for coil cleaning:

Part No. P902 DT 05EE: traditional cleaning method
Part No. P902 CL 05EE: cleaning and degreasing.

These products have a neutral pH value, do not contain phosphates, are not harmful to the human body, and can be disposed of through the public drainage system.

Depending on the degree of fouling both products can be used diluted or undiluted.

For normal maintenance routines we recommend using 1 kg of the concentrated product, diluted to 10%, to treat a coil surface of 2 m². This process can either be carried out using a high-pressure spray gun in the low-pressure position. With pressurised cleaning methods care should be taken not to damage the coil fins. The spraying of the coil must be done:

- in the direction of the fins
- in the opposite direction of the air flow direction
- with a large diffuser (25-30°)
- at a minimum distance of 300 mm from the coil.

It is not necessary to rinse the coil, as the products used are pH neutral. To ensure that the coil is perfectly clean, we recommend rinsing with a low water flow rate. The pH value of the water used should be between 7 and 8.

For MCHE condenser coils use only clean water with a pH value between 7 and 8.

IMPORTANT:

- ***Never use pressurised water without a large diffuser. Do not use high-pressure cleaners for Cu/Cu and Cu/Al coils! High pressure cleaners are only permitted for MCHE coils (maximum permitted pressure 68 bar)***
- ***Concentrated and/or rotating water jets are strictly forbidden.***
- ***Never use a fluid with a temperature above 45°C to clean the air heat exchangers.***
- ***Correct and frequent cleaning (approximately every three months) will prevent 2/3 of the corrosion problems.***
- ***Protect the control box during cleaning operations.***

11.7 - Evaporator maintenance

Check that:

- the insulating foam is intact and securely in place.
- the cooler heaters are operating, secure and correctly positioned.
- the water-side connections are clean and show no sign of leakage.

11.8 - Compressor maintenance

11.8.1 - Oil separator

Check the correct operation of the heaters and check that they are well attached to the oil separator ring.

11.8.2 - Integral oil filter change

As system cleanliness is critical to reliable system operation, there is a filter in the oil line at the oil separator outlet. The oil filter is specified to provide a high level of filtration (5 µm) required for long bearing life.

The filter should be checked after the first 500 hours of operation, and every subsequent 2000 hours. The filter should be replaced at any time when the pressure differential across the filter exceeds 2 bar.

The pressure drop across the filter can be determined by measuring the pressure at the filter service port and the oil pressure port. The difference in these two pressures will be the pressure drop across the filter, check valve, and solenoid valve. The pressure drop across the check valve and solenoid valve is approximately 0.4 bar, which should be subtracted from the two oil pressure measurements to give the oil filter pressure drop.

11.8.3 - Compressor rotation control

Correct compressor rotation is one of the most critical application considerations. Reverse rotation, even for a very short duration, damages the compressor.

The reverse rotation protection scheme must be able to determine the direction of rotation and stop the compressor within 300 ms. Reverse rotation is most likely to occur whenever the wiring to the compressor terminals is disturbed.

To minimize the opportunity for reverse rotation, the following procedure must be applied. Rewire the power cables to the compressor terminal pin as originally wired.

For replacement of the compressor, a low pressure switch is included with the compressor. This low pressure switch should be temporarily installed as a hard safety on the high pressure part of the compressor. The purpose of this switch is to protect the compressor against any wiring errors at the compressor terminal pin. The electrical contact of the switch would be wired in series with the high pressure switch. The switch will remain in place until the compressor has been started and direction of rotation has been verified; at this point, the switch will be removed.

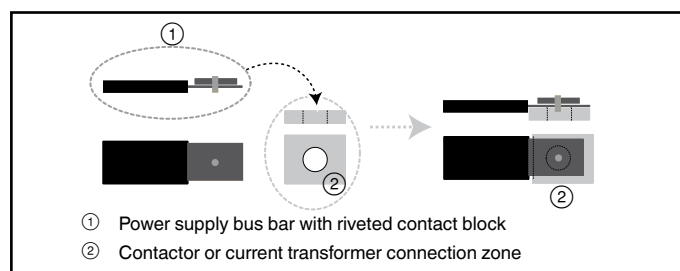
The switch that has been selected for detecting reverse rotation is Carrier part number HK01CB001. This switch opens the contacts when the pressure falls below 7 kPa. The switch is a manual reset type that can be reset after the pressure has once again risen above 70 kPa. It is critical that the switch be a manual reset type to preclude the compressor from short cycling in the reverse direction.

11.9 - Precaution for compressor power supply bus bar connection

During re-connection it is imperative to:

- engage each bus bar in the cage up to the stop
- ensure visually that the bus bars have good contact at the connection areas: there must not be any free movement between the bus bar and the connection area created by the fixing rivet of the contact block.

Connection of the contactor or current transformer



12 - START-UP CHECKLIST FOR 30XAS LIQUID CHILLERS (USE FOR JOB FILE)

Preliminary information

Job name:
Location:
Installing contractor:
Distributor:

Unit

Model:

Compressor

Model number
Serial number
Motor number

Evaporator

Model number
Serial number

Condenser

Model number

Additional optional units and accessories
.....

Preliminary equipment check

Is there any shipping damage? If so, where?
.....
Will this damage prevent unit start-up?

- ☐ Unit is level in its installation
- ☐ Power supply agrees with the unit nameplate
- ☐ Electrical circuit wiring has been sized and installed properly
- ☐ Unit ground wire has been connected
- ☐ Electrical circuit protection has been sized and installed properly
- ☐ All terminals are tight
- ☐ All chilled water valves are open
- ☐ All chilled water piping is connected properly
- ☐ All air has been vented from the chilled water circuit
- ☐ Chilled water pump (CWP) is operating with the correct rotation. Check the phase sequence of the electrical connection. If the unit is equipped with a hydronic module, use the pump test function (refer to the 30XA/30XAS/30XW Pro-Dialog control manual). After the pump test has been completed, switch the unit off again.
- ☐ Circulate chilled water in the water circuit for at least two hours, then remove, clean and replace the screen filter. After the pump test has been completed, switch the unit off again.
- ☐ Inlet piping to cooler includes a 20 mesh strainer with a mesh size of 1.2 mm.
- ☐ The compressor flange has been removed.

Unit start-up

- ☐ a. Oil heaters have been energized for at least 24 hours (30XAS)
- ☐ b. Oil level is correct
- ☐ c. All discharge and liquid valves are open
- ☐ d. All suction valves are open, if equipped
- ☐ e. All oil line valves and economizer discharge bubbler valves (if equipped) are open
- ☐ f. The contactor
- ☐ g. Checks have been carried out for any possible leaks. Unit has been leak checked (including fittings)
 - ☐ g1 - on the whole unit
 - ☐ g2 - at all connections

Locate, repair, and report any refrigerant leaks.....
.....
.....

- ☐ h. Check voltage imbalance: AB..... AC..... BC.....
Average voltage = V
Maximum deviation = V
Voltage imbalance = %
- ☐ i. Voltage imbalance is less than 2%

WARNING: Operation of the chiller with an improper supply voltage or excessive phase imbalance constitutes abuse which will invalidate the Carrier warranty. If the phase imbalance exceeds 2% for voltage, or 10% for current, contact your local electricity supply at once and ensure that the chiller is not switched on until corrective measures have been taken.

Check cooler water loop

- ☐ Water loop volume = litres
- ☐ Calculated volume = litres
- ☐ 3.25 litres/nominal kW capacity for air conditioning
- ☐ 6.5 litres/nominal kW capacity for process cooling
- ☐ Proper loop volume established
- ☐ Proper loop corrosion inhibitor included.....litres of.....
- ☐ Proper loop freeze protection included (if required) litres of.....
- ☐ Piping includes electric heater tape, if exposed to the outside
- ☐ Inlet piping to cooler includes a 20 mesh strainer with a mesh size of 1.2 mm

Check pressure drop across the cooler

- ☐ Entering cooler = kPa
- ☐ Leaving cooler = kPa
- ☐ Leaving - entering = kPa

WARNING: Plot cooler pressure drop on performance data chart (in product data literature) to determine total litres per second (l/s) and find unit's minimum flow rate.

- ☐ Total = l/s
- ☐ Nominal kW = l/s
- ☐ Total l/s is greater than unit's minimum flow rate
- ☐ Total l/s meets job specified requirement of..... l/s

WARNING: Once power is supplied to the unit, check for any alarms (refer to the 30XA/30XAS/30XW Pro-Dialog control manual for the alarm menu).

Note all alarms:.....
.....

Notes:.....
.....



www.eurovent-certification.com
www.certiflash.com



Order No: 13467-76, 07.2012 - Supersedes order No: 13467-76, 03.2010.
Manufacturer reserves the right to change any product specifications without notice.

Manufacturer: Carrier SCS, Montluel, France.
Printed in the European Union.