



USER'S MANUAL

MST-S3W

S-NET mini



Safety Precautions

This installation manual describes how to install the S-NET mini. For installation of other optional accessories, refer to the appropriate installation manual.



CAUTION

- ◆ Do not install the product where there's combustible gas.
 - Potential risk of fire or explosion.
- ◆ Do not install the outdoor unit on an unstable place such as outer high wall of an apartment or building and on an outside terrace to avoid falls.
 - If the outdoor unit falls, it may cause personal injury or loss of property.
- ◆ Install the product with proper power supply.
 - Potential risk of fire or damage to the product.
- ◆ Do not connect power cable to a communication terminal.
 - Potential risk of fire or explosion.
- ◆ Consult the place of purchase or a contact center to disassemble or repair the product.
 - Potential risk of unit malfunction, water leakage, electric shock, or fire.
- ◆ Contact service center or dealer for installation.
 - Potential risk of fire or damage to the product.
- ◆ Do not use Benzene, Thinner or Clorox™. They may damage the surface of the unit and can create a risk or fire.



WARNING

- ◆ Do not put undue stress on the power cable or place heavy objects on it.
 - Damaged power cable may cause fire.
- ◆ Install the product on a hard and even place that can support its weight.
 - If the place cannot support its weight, the product may fall down and it may cause injury.
- ◆ Do not disassemble or reinstall the product on your own discretion.
 - Potential risk of electric shock or fire.
- ◆ Secure the installation plate tightly on the wall.
 - Potential risk of damage to the product.
- ◆ Install the product avoiding direct sunlight or heater, especially water.
 - Potential risk of electric shock or poor air conditioning.
- ◆ Never use a damaged power plug, power cable, or loosened power receptacle.
 - Potential risk of fire or electric shock.
- ◆ Do not give excessive shock to the air conditioner.
 - Potential risk of fire or unit malfunction.
- ◆ Do not yank the power cable and touch the power plug with wet hands.
 - Potential risk of fire or electric shock.
- ◆ If the power cable or cord is damaged, the manufacturer, a qualified service technician must replace it to avoid a potential risk.
- ◆ Do not install the product in areas exposed to oil or vapor.
 - Potential risk of product damage or malfunction.

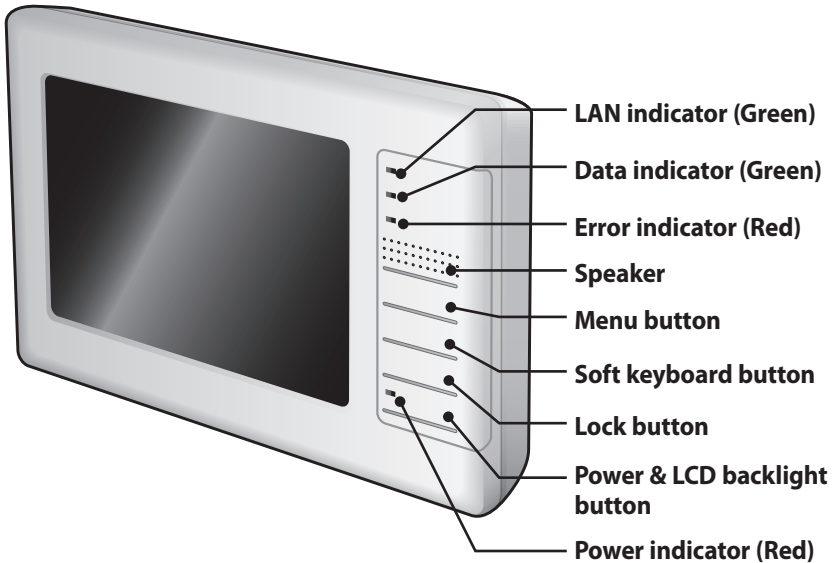
Contents

VIEWING THE PART	6
◆ FRONT VIEW	6
◆ REAR VIEW	7
◆ BOTTOM VIEW	7
BEFORE USE	8
◆ SYSTEM ORGANIZATION	8
◆ CHECK LIST	9
MAIN FUNCTION	10
◆ TERMS USED IN DMS	10
◆ INTERFACE WITH LOWER LEVEL CONTROLLER	10
◆ INDOOR UNIT CONTROL	10
◆ SCHEDULE MANAGEMENT	10
◆ ZONE MANAGEMENT	11
◆ SECURITY SETUP	11
◆ VIEW DVM INFORMATION	11
◆ PEAK POWER MANAGEMENT	11
◆ OPERATIONAL MODES	12
◆ INDOOR UNIT USAGE RESTRICTION	13
◆ OTHERS	13
◆ POWER MONITORING	13
GETTING STARTED	14
◆ STARTING S-NET MINI	14
◆ CONNECTING CENTRALIZED CONTROLLER AND THE TRANSMITTER	17
◆ CONNECTING DMS	17
MAIN DISPLAY	18
◆ MAIN MENU	18
INDOOR UNIT CONTROL	19
◆ INDOOR UNIT CONTROL MENU	19
◆ VIEWING BY ICON	20
◆ VIEWING BY LIST	21
◆ VIEWING BY FULL SCREEN	22
◆ CONTROLLING INDIVIDUAL INDOOR UNIT	24
◆ CONTROLLING MULTIPLE INDOOR UNITS	26
◆ CONTROLLING ALL THE INDOOR UNITS	27
◆ SETTING UP THE TEMPERATURE LIMIT	28
◆ APPLYING THE TEMPERATURE LIMIT	30
◆ CANCELING THE TEMPERATURE LIMIT	31
◆ ENABLE WIRED/WIRELESS REMOTE CONTROL	32
◆ DISABLE WIRED/WIRELESS REMOTE CONTROL	33
◆ CHECKING TODAY'S SCHEDULE	34
SCHEDULE MANAGEMENT	35
◆ SCHEDULE MANAGEMENT MENU	35
◆ CREATING NEW SCHEDULES	36
◆ EDIT SCHEDULES	42
◆ DELETE SCHEDULES	43
◆ APPLY SCHEDULES	44
◆ STOP SCHEDULES	45
◆ STOP ALL SCHEDULES	46
◆ SAVING SCHEDULES	47
◆ OPENING SCHEDULE	48
◆ VIEWING SCHEDULE	49

ZONE MANAGEMENT	50
◆ ZONE MANAGEMENT MENU	50
◆ CREATING A NEW ZONE	51
◆ DELETING A NEW ZONE	52
◆ RENAMING A NEW ZONE/INDOOR UNIT	53
◆ MOVING A ZONE/INDOOR UNIT	54
◆ MOVING AN INDOOR UNIT TO A DIFFERENT ZONE	55
◆ INITIALIZE ZONE MANAGEMENT	56
◆ SAVING ZONE MANAGEMENT	57
◆ OPENING ZONE MANAGEMENT	58
SECURITY SETUP	59
◆ SECURITY SETUP MENU	59
◆ ENABLE/DISABLE PASSWORD	60
◆ CHANGING PASSWORD	61
TRACKING	62
◆ TRACKING MENU	62
◆ EXECUTE TRACKING	64
VIEW DVM INFORMATION	68
◆ VIEW DVM INFORMATION	68
◆ VIEW INDIVIDUAL DETAILED INFORMATION	69
◆ VIEW ERROR LOG	70
H/W SETUP	71
◆ H/W SETUP MENU	71
◆ DATE/TIME SETUP	72
◆ BRIGHTNESS CONTROL	73
◆ VOLUME CONTROL	74
◆ IP SETUP	75
◆ VIEW VERSION	76
◆ STYLUS ADJUSTMENT	77
POWER MANAGEMENT	78
◆ POWER MANAGEMENT MENU	78
◆ PRIORITY CONTROL MODE	79
◆ EDIT SETUP IN PRIORITY CONTROL MODE	81
◆ CIRCULATION CONTROL MODE	84
◆ EDIT SETUP IN CIRCULATION CONTROL MODE	86
◆ SET CLASS IN CIRCULATION CONTROL MODE	88
◆ POWER MONITORING	90
SYSTEM MANAGEMENT	93
◆ SYSTEM MANAGEMENT MENU	93
◆ COMMUNICATION SETUP	94
◆ SYSTEM INITIALIZATION	95
◆ DMS IP SETUP	96
◆ SYNCHRONIZE TIME	99
SOFT KEYBOARD	100
◆ USING SOFT KEYBOARD	100
TROUBLE SHOOTING	102
APPENDIX	105
◆ IP TERMINOLOGY	105

Viewing the Part

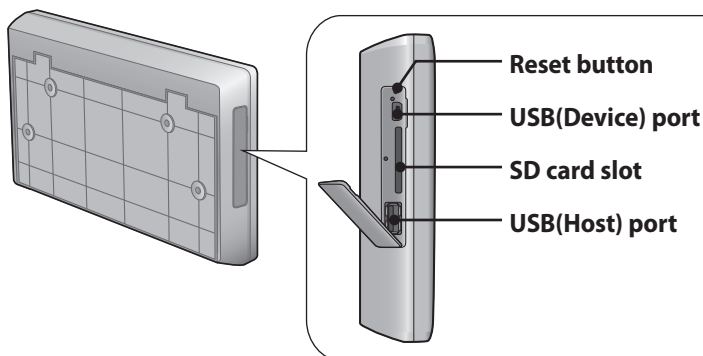
Front View



LAN indicator (Green)	Indicates communication status of internet
Data indicator (Green)	Indicates 485 communication status
Error indicator (Red)	Indicates error
Speaker	Sound can be heard through speaker
Menu button	Select menu
Soft keyboard button	Press this button to use the soft keyboard to enter text or number
Lock button	Restricts other people's access by using password.
Power & LCD Backlight button	Turn On/Off the power and the LCD backlight.
Power indicator (Red)	Indicates on/off status

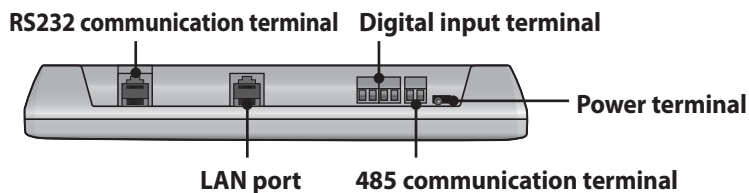
- Note**
- ◆ For the longer use of your LCD, screen will automatically switch to screensaver (LCD backlight off) if there has not been any input for 5 minutes.
 - ◆ Screensaver (LCD backlight off) will be off and the LCD backlight will turn on by pressing any button or tap anywhere on the LCD.
 - ◆ Though your LCD backlight is off, S-NET mini is still in operation.

Rear View



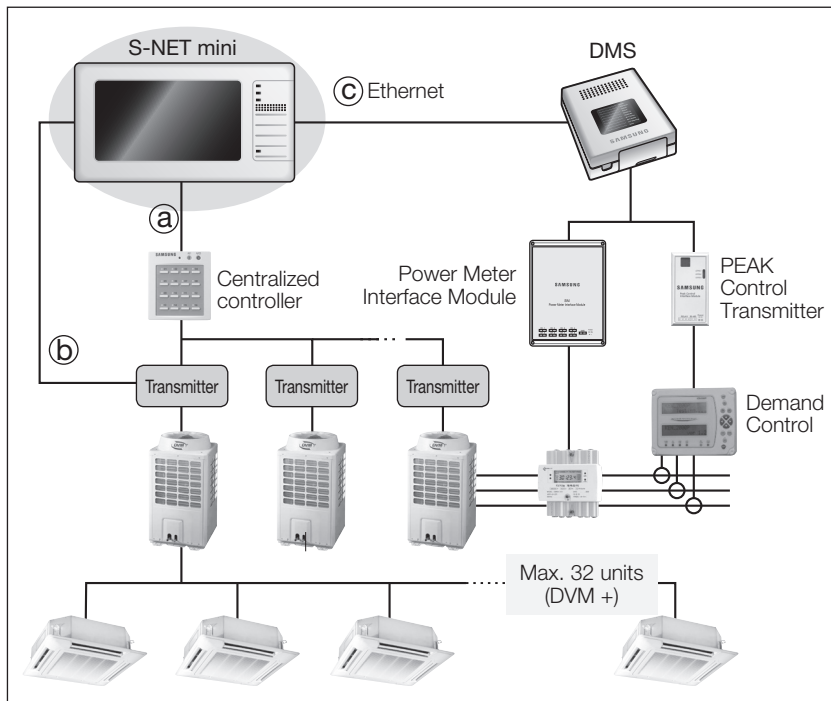
Reset button	Reset S-NET mini
USB(Device) port	Connect with other products set as host
SD card slot	Insert SD card in, to save or load data
USB(Host) port	Connect with other products set as device

Bottom View



RS232 communication terminal (For OS Debugging)	Connect with other RS232 communication device
LAN port	Connect with DMS
Digital input terminal	Connect with devices which outputs digital signal (Ex. Fire sensor)
485 communication port	Connect with 485 communication terminal on Centralized controller or Transmitter
Power terminal	Connect with 12V adapter

System Organization



- ◆ Connecting S-NET mini with Centralized controller. (Type (a))
 - You can control up to 16 Centralized controllers and 256 indoor units by using S-NET mini.
- ◆ Connecting S-NET mini with Transmitter. (Type (b))
 - You can control up to 16 Transmitters and 256 indoor units by using S-NET mini.
- ◆ Connecting S-NET mini with DMS (Type (c))
 - You can control up to 4 DMS and 256 indoor units by using S-NET mini.

Check List

Checking the Power Cable.

- ◆ Press the **Power** button to turn on the S-NET mini.
 - ◆ Check if the Power indicator turns red.
If the Power indicator has not turned on, check the power terminal and make sure power cable is correctly connected.
-

Checking the Indicators.

- ◆ Check if the LAN indicator and the Data indicator turns green.
 - ◆ Check if the Error indicator turns red.
If the Error indicator has turned red, check the power and communication cable connection.
-

Checking the Connection

Connection with DMS

- ◆ Make sure LAN cable is correctly connected to the LAN port.
- ◆ Make sure power terminal is correctly connected.

Connection with Centralized controller/Transmitter

- ◆ Make sure communication cable is correctly connected to 485 communication terminal.
Check the polarity of the 485 communication cable. When the polarity changes, communication will be unavailable.
 - ◆ Make sure power terminal is correctly connected.
-

Main Function

Terms Used in S-NET mini

- ◆ **S-NET mini:** A device that controls system air conditioner installed in a small and medium-sized buildings. It can be used with Centralized controller, Transmitter and DMS.
- ◆ **DMS:** Abbreviation for Data Management System.
- ◆ **Centralized controller:** Control system that has ability to control up to 16 groups.
- ◆ **Transmitter:** Transmits data between Centralized controller and the indoor units.
- ◆ **Peak transmitter:** Transmits PEAK control data from Demand controller and deliver data to DMS.
- ◆ **DVM:** Digital Variable Multi Air conditioning system (Outdoor unit)
- ◆ **Demand control:** Manages maximum power usage by getting the information from the power meter interface module.

Interface with Lower Level Controller

S-Net mini is an integrated management system which can be used with lower level controllers such as DMS, Centralized controller and Transmitter. These integrated management systems can control system air conditioner installed in small and medium sized buildings.

Indoor Unit Control

S-NET mini can remotely control the temperature, operation mode, fan speed on indoor units connected to DMS, Centralized controllers and Transmitters.

Schedule Management

S-NET mini can apply schedule and repeat them daily/weekly.

- ◆ You can select a schedule by Apply/Cancel command.
- ◆ Individual schedule can contain up to 10 events.
(Daily repeat: Max.10 events, Weekly repeat: Max. 70 events)

Item	Content	Remarks
Schedule period	Starting and ending date of a schedule	
Exception days	Set an exception day within a schedule period to ignore the schedule control	
Selected indoor units	Select indoor units to receive schedule control	
Event	Set indoor unit operation modes - Indoor unit On time - Indoor unit Off time - Desired temperature - Control modes: Heat, Cool, Dry, Fan, and Auto - Enable/Disable remote control	Maximum 10 events


Zone Management

S-NET mini can control indoor units conveniently by using zone management system.

- ◆ Zone/Indoor name can be maximum 32 letters long.
Special character or symbols (\, /, ;, *, ?, ", ' , , <, >) cannot be used in a name.
- ◆ Each zone can contain maximum 64 indoor units.

Security Setup

To maintain security, you can set password on your S-NET mini.

- ◆ Password Enabled: You will need to enter the password to use the menu with the Lock () icon.
- ◆ Password Disabled: You may use all the function in the main menu without any restrictions.

View DVM Information

You can check error log, connection status and cycle status.

- ◆ S-NET mini saves maximum 256 error logs. If the number of errors exceeds 256, only the latest 256 cases are stored by deleting the oldest error history.
- ◆ You can check device name, IP address, date of occurrence, current status, date resolved, and type of error from the error log.

Device	Type of an error
Indoor unit	Indoor unit communication error Indoor unit sensor related error Other errors
Outdoor unit	Outdoor unit communication error Piping inspection error Outdoor unit sensor related error Other outdoor unit related errors
Solution Products such as the Centralized Controller	Solution device related communication error

PEAK Power Management

S-NET mini can manage and monitor PEAK power through DMS that is connected to a PEAK transmitter.

PEAK power management

- ◆ In case of temporary power usage reaching the PEAK power, the air conditioner restricts its use, such as changing its mode to Fan mode or cutting off the power, to minimize the power usage.
- ◆ S-Net mini controls and manages indoor units according to the alarm level provided by DMS to maintain the PEAK power.
- ◆ PEAK level is composed of 4 different levels from 0~3, and the DMS, connected to a PEAK control interface module, provide the PEAK level information.

Operational modes

PEAK power management is operating in 'No PEAK setup', 'Priority control mode', or 'Circulation control mode'.

- ◆ No PEAK setup: This is a factory default and the PEAK power management is not in operation.
- ◆ Priority control mode: PEAK power operation mode that assigns indoor units to Levels 1, 2 and 3 or none and operates the respective indoor units when the power level at the peak interface module reaches anyone of the preset level.
 - Priority of each indoor units can be set through the Web or with Upper level controller.

PEAK level	Applied group
Level 0	No Peak power management
Level 1	Peak power management on groups within priority level 1 group
Level 2	Peak power management on groups within priority level 1 and 2
Level 3	Peak power management on groups within priority level 1~3

- ◆ Circulation control mode: An energy saving function that operates each class in rotation according to the alert level at the peak interface module. The higher the alert level, the more classes will be put on energy-saving operation.
 - Within the set Circulation period, indoor units in applied group will be restricted in its operation. When the Circulation period ends, next applied group will be restricted since PEAK power management will be active, and the indoor units in previous group will operate in the recent mode used.

PEAK level	Applied group
Level 0	No Peak power management
Level 1	Peak power management on groups within priority level 1 group
Level 2	Peak power management on groups within priority level 1 and 2
Level 3	Peak power management on groups within priority level 1~3

Indoor unit usage restriction

- ◆ S-NET mini should have DMS in connection with the PEAK control transmitter.
- ◆ When the indoor unit is operating in Dry/Cool/Auto, they will switch to Fan mode while PEAK power management is applied.
- ◆ When the indoor unit is operating in Heat mode, it will switch to 'Fan mode', 'Power off' or 'Change set temperature(16°C)'. (You can change these setting on S-NET mini.)
- ◆ If the indoor unit with its power off has been assigned to PEAK power management group and the user try to operate the indoor unit while PEAK power management is in active, indoor unit will automatically stop its operation.
- ◆ If the indoor unit operating in Fan mode has been assigned to PEAK power management group and the user try to change operation mode to Cool or Heat mode while in PEAK power management is in active, indoor unit will automatically switch its mode to Fan mode.
- ◆ In PEAK power management mode, 'Turning on the indoor unit' or 'Changing operation mode to Cool/Auto/Dry' will be restricted.
- ◆ In PEAK power management mode, 'Turning on the indoor unit' or 'Changing operation mode to Cool/Auto/Dry' within the schedule and all the other events will be ignored.
- ◆ 'Turning on the indoor unit' or 'Changing operation mode to Cool/Auto/Dry' through Centralized controller or Wired/Wireless remote controller while in PEAK power management mode will automatically turn off the indoor unit or switch its operation mode to Fan mode.
- ◆ In PEAK power management mode, if the user turns off the indoor unit within PEAK power management group, it will remain off after PEAK power management has been deactivated.

Others

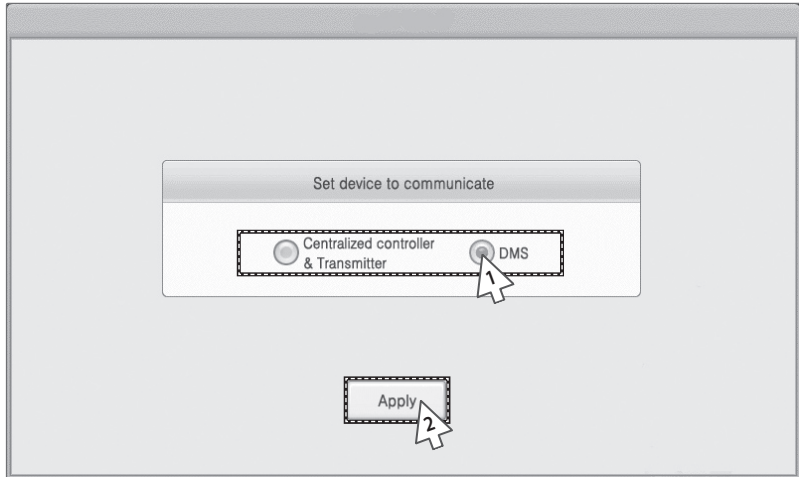
- ◆ Be aware that the indoor units in PEAK power management mode will not return to its previous settings if Tracking occurs in PEAK power management mode.
- ◆ Date/Time changes will not affect the Circulation control period if the changes has been made in PEAK power management mode.

Power monitoring

Power monitoring is an operation mode which monitors maximum power and the current power usage.

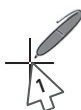
- ◆ Target Demand: This is the maximum amount of power set by user.
- ◆ Current Target Power Demand: This is the amount of power left before reaching the Target Demand.
- ◆ Current Power: This is current power usage in kW unit.
- ◆ Current Demand Power: This is the accumulated demand power from starting period.

Starting S-NET mini



- 1 When the main display appears, select 'Centralized controller & Transmitter' or 'DMS'.
 - ◆ They should be connected to S-NET mini before starting the system.
- 2 Tap [Apply].
 - ◆ Selected communication equipment will be applied and the S-NET mini will re-start.

Carefully press on the center of the target.
Repeat as the target moves around the screen.



3 Touchscreen calibration window appears after rebooting S-NET mini.

4 Use stylus to tap center of the cross.
Tap from 1 to 5 in order as shown in the above figure.

Caution

- ◆ **Do not use sharp objects to touch the LCD screen. LCD screen can be damaged.**
- ◆ **Using finger or other dull object to press the cross will result incorrect screen calibration.**
- ◆ **Stylus pen is not included in a package.**

New calibration settings have been measured.
Tap the screen to register new data.
Wait for 30 seconds to cancel new data and keep the old setting.

Time limit : 28 sec



-
- 5** Tap anywhere on the screen after calibration.
- ◆ Changed setting will be applied, and S-NET mini will restart.
 - ◆ If you want to stay with the previous setting, wait 30 seconds without touching the LCD and the buttons.
-

Connecting Centralized Controller and the Transmitter

- 1 Make sure communication cables (C1, C2) of Centralized controller and Transmitter are connected.
 - ◆ Communication cable (C1, C2) have to be connected to S-NET mini for communication with Centralized controller and the Transmitter.
 - ◆ Be aware of the fact that the communication cable for Centralized controller and the Transmitter have polarity.
- 2 Execute tracking.
 - ◆ S-NET mini communicates with Centralized controller and the Transmitter to bring all the information on indoor units and outdoor units.
 - ◆ Indoor unit control and other menu can be used after tracking.
 - ◆ Refer to Tracking → Execute Tracking for instructions on tracking.
(See pages 64~65)

Connecting DMS

- 1 Make sure LAN cable is connected to the LAN port on the bottom side of the S-NET mini.
 - ◆ LAN cable must be connected in order to establish communication connection between S-NET mini and DMS.
- 2 Set IP for S-NET mini.
 - ◆ IP for S-NET mini should be set up in order to communicate with DMS.
 - ◆ Refer to H/W setup → IP setup for instructions on setting up the IP.
(See page 75)
- 3 Set IP for DMS.
 - ◆ IP for DMS should be set up in order to communicate with S-NET mini.
 - ◆ Refer to System management → DMS IP setup for instructions on setting up the IP. (See pages 96~98)
- 4 Execute tracking.
 - ◆ S-NET mini communicates with DMS to bring all the information on indoor units and outdoor units.
 - ◆ Indoor unit control and other menu can be used after tracking.
 - ◆ Refer to Tracking → Execute Tracking for instructions on tracking.
(See pages 66~67)
- 5 Synchronize the time on S-NET mini and DMS.
 - ◆ S-NET mini and DMS should have synchronized time to operate correct indoor unit schedule.
 - ◆ Refer to H/W setup → Date/Time for instructions on setting date/time.
(See page 72)

Main Display

Main Menu



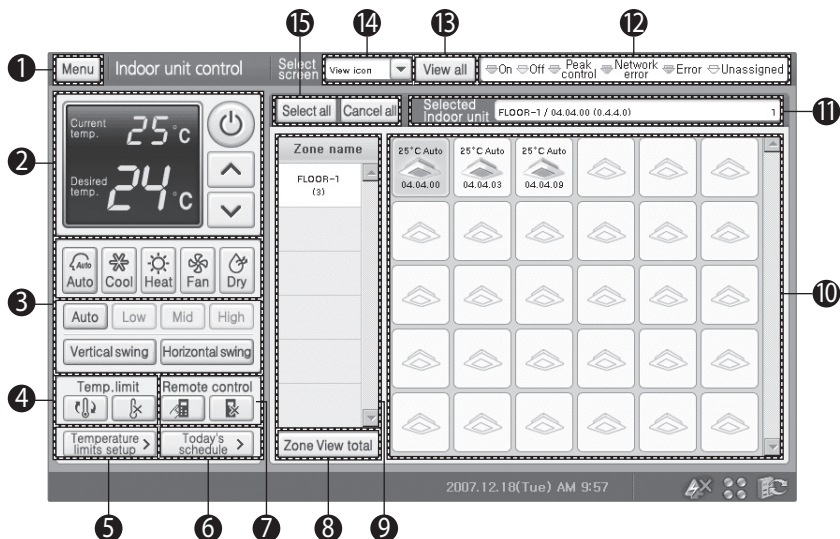
No.	Name and Function
1	Control menu (Indoor unit control, Schedule management, Zone management, Security setup, Tracking, View DVM information, H/W setup, Power management, System management)
2	Indoor unit error indicator
3	Date/Time indicator
4	PEAK setup : No PEAK setup : Not Operating : PEAK transmitter error / / / : Priority Control Mode Level (0,1,2,3) / / / / / / / / : Circulation Control Mode Class (0,1,2,3,4,5,6,7,8)

No.	Name and Function
5	DMS Connection status : DMS not connected (Gray) : DMS connected (Blue) : DMS Error (Orange)
6	Emergency Stop Status : Emergency Stop : Normal operation

Note Menu with (Lock) may not show up on your screen depending on a Security setup.

Indoor Unit Control

Indoor Unit Control Menu



1 Tap [Indoor unit control] on the Main menu.

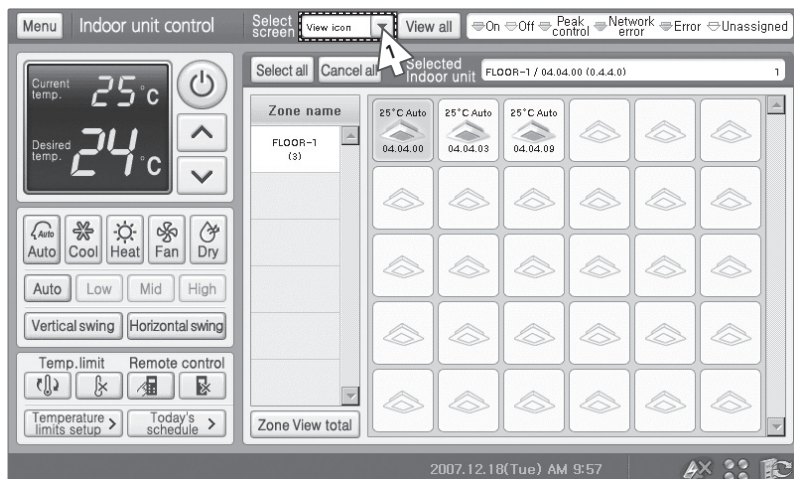
◆ Check the indoor unit control menu.

No.	Remarks	
1	Return to Main menu	
2	Indoor unit control window	Turn On/Off the selected Indoor unit
3		Set current temperature and desired temperature on selected indoor units
4		Choose operation mode, fan speed, and air flow direction on selected indoor units
5		Apply/Cancel the temperature limit on selected indoor units
6		Sets up the Upper/Lower limit temperature on selected indoor units
7		View today's applied schedule
8		Enable/Disable wired/wireless remote control
9	Zone view total	
10	Zone name list	
11	Indoor units display window	
12	Selected Indoor unit display (Shows selected Zone/Name and number of indoor units)	
13	Indicates indoor unit status	
14	Shows entire list of indoor units	
15	Shows entire list of indoor units within a selected zone	
16	Select/deselect entire indoor units	

Indoor Unit Control (Continued)

Viewing by Icon

! Tap [Indoor unit control] on the Main menu.



1 When the indoor unit control menu appears, tap [▼] then select 'View icon'.

◆ You can select either 'View icon' or 'View list'.

2 Check the status of all indoor units.

◆ Indoor unit icon (name): The background color indicates the status of indoor units.

Blue	Gray	Green	Pink	Red	White
On	Off	PEAK operation	Network error	Error	Unassigned indoor unit

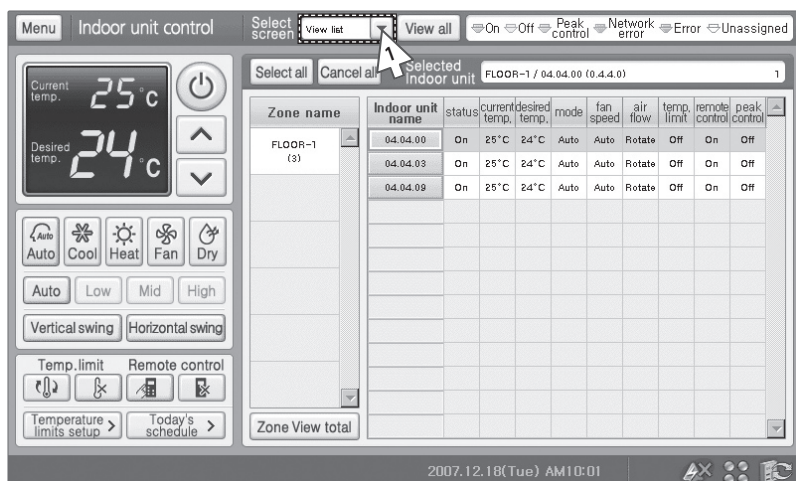
◆ Current Temperature: Indicates current temperature of rooms with indoor units.

◆ Desired Temperature: Indicates set temperature by user.

◆ Operation Mode: Auto/Cool/Heat/Fan/Dry.

Viewing by List

! Tap [Indoor unit control] on the Main menu.



- 1 Tap [▼] then select 'View list' from the indoor unit control menu.

◆ You can select either 'View icon' or 'View list'.

- 2 Check the status of all indoor units.

◆ Indoor unit name: The background color indicates the status of indoor units.

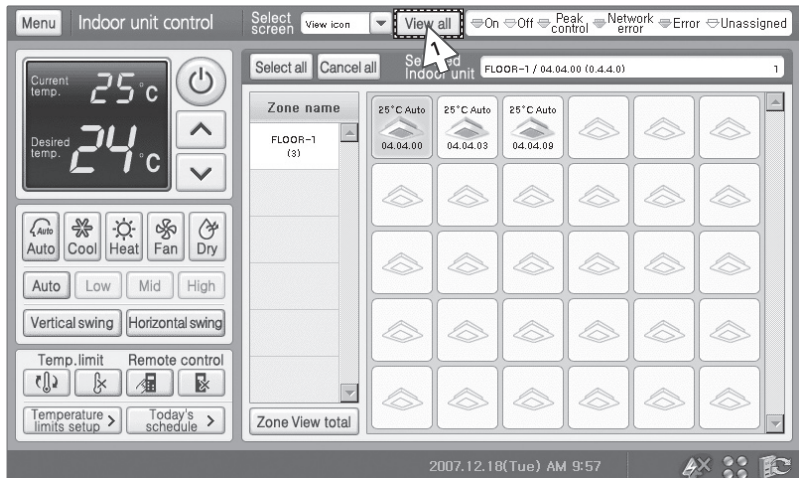
Blue	Gray	Green	Pink	Red	White
On	Off	PEAK operation	Network error	Error	Unassigned indoor unit

- ◆ Status: Indicates On/Off status.
- ◆ Current temperature: Indicates current temperature of rooms with indoor units.
- ◆ Desired temperature: Indicates set temperature by user.
- ◆ Operation mode: Auto/Cool/Heat/Fan/Dry.
- ◆ Fan speed/Air flow: Indicates the fan speed and the air flow direction of the indoor unit.
- ◆ Additional information: Status of temperature limit, remote control restriction, and peak control.

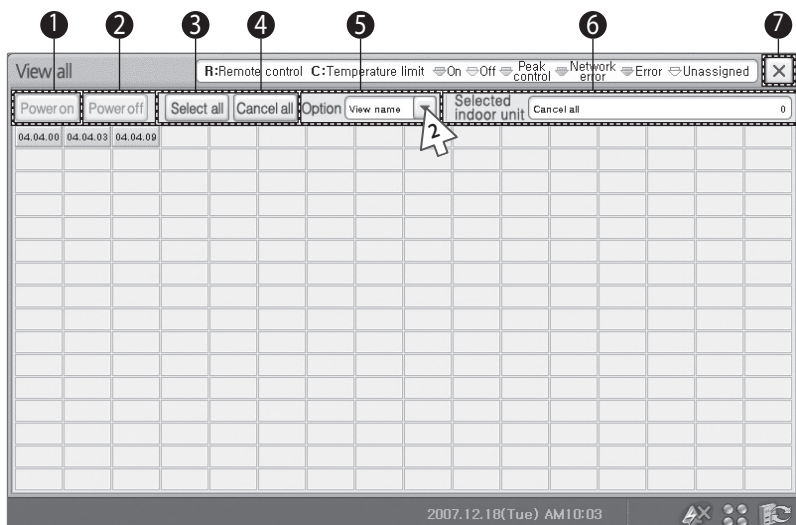
Indoor Unit Control (Continued)

Viewing by Full Screen

! Tap [Indoor unit control] on the Main menu.



1 Tap [View all] from the indoor unit control menu.



No.	Menu	Remarks
1	Power on	Turn all the selected indoor units on. (Indoor units operate in most recent used mode)
2	Power off	Turn all the selected indoor units off.
3	Select all	Select all the indoor units.
4	Cancel all	Deselect all the indoor units.
5	Option	Select from View name, View temp. and View RC.
6	Selected indoor unit display	Shows selected Zone/Name and number of indoor units)
7	Close	Close the full screen window.

- 2 Tap [▼] on option from the full screen window to check the status of all indoor units.

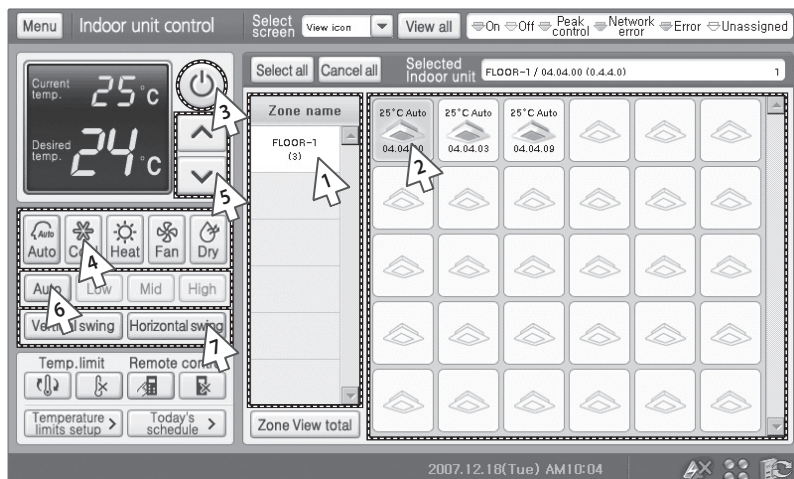
- ◆ View name: Name of the indoor unit.
- ◆ View temp.: Shows current temperature.
- ◆ View RC: R- Indicates remote control restriction status.
C- Indicates upper and lower temperature limit.
- ◆ Background color: Different color indicates different indoor unit status.

Blue	Gray	Green	Pink	Red	White
On	Off	PEAK operation	Network error	Error	Unassigned indoor unit

Indoor Unit Control (Continued)

Controlling Individual Indoor Unit


! Tap [Indoor unit control] on the Main menu.



- 1 Select a zone from the Zone name list.
 - ◆ All the indoor units under selected zone will be displayed on Indoor unit display window.
- 2 Select an indoor unit to be controlled from the indoor unit display window.
 - ◆ Zone name and the indoor unit name will be displayed on the Selected Indoor unit display.
 - ◆ Current status of selected indoor unit will be displayed on the Selected Indoor unit display.
 - ◆ Tap the indoor unit again to deselect.

Note

- ◆ When Basic operation (Auto/Cool/Heat/Fan/Dry) and advanced function (good'sleep/Timer) is selected, desired temperature on the remote control and the S-NET mini can be different. Advanced function will be displayed as 'Auto' on your S-NET mini. All the advanced function will be canceled when you control the air conditioner with S-NET mini.
- ◆ Indoor units cannot be controlled when the unit is off. Turn on the indoor unit before controlling by S-NET mini.

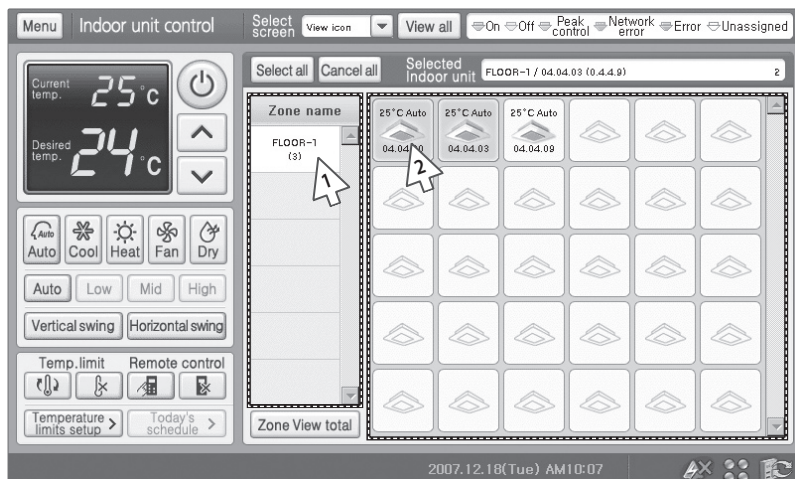
-
- 3** Tap  (Power) to turn on the indoor unit.
- ◆ Blue: Indoor unit is on.
 - ◆ Gray: Indoor unit is off.
-
- 4** Select an operation mode.
- ◆ Select from five available modes: Auto/Cool/Heat/Fan/Dry.
-
- 5** Tap [Λ] or [V] to set the desired temperature.
- ◆ Temperature can be set between 18°C and 30°C by 1°C in Auto/Cool/Dry mode.
 - ◆ Temperature can be set between 16°C and 30°C by 1°C in Heat mode.
 - ◆ Temperature cannot be set in Fan mode.
 - ◆ If the temperature restriction is on, temperature can be set within the restricted range only. (See pages 28~29)
-
- 6** Select fan speed.
- ◆ When Auto/Fan mode is on, fan speed is controlled automatically.
 - ◆ Fan speed cannot be set in Fan mode.
-
- 7** Select air flow direction.
- ◆ Horizontal and the vertical air flow directions are available.
 - ◆ Both of the options can be selected simultaneously. Airflow status will be shown as 'rotate'.
-

Mode \ Fan Speed	Fan Speed			
	Auto	Low	Mid	High
Auto	o	x	x	x
Cool	o	o	o	o
Heat	o	o	o	o
Fan	x	o	o	o
Dry	o	x	x	x

Indoor Unit Control (Continued)

Controlling Multiple Indoor Units

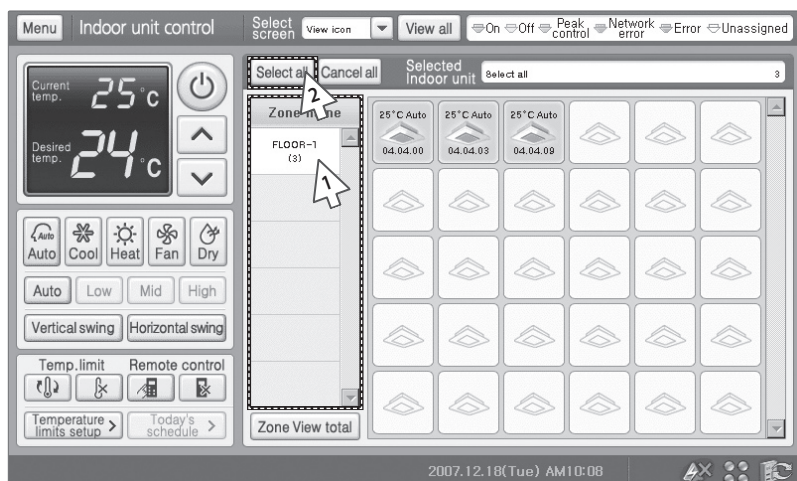
! Tap [Indoor unit control] on the Main menu.



- 1 Select a zone from the Zone name list.
 - ◆ All the indoor units under selected zone will be displayed on Indoor unit display window.
- 2 Select an indoor unit to be controlled from the indoor unit display window.
 - ◆ Zone name and the indoor unit name will be displayed on the Selected Indoor unit display.
 - ◆ Current status of last selected indoor unit will be displayed on the Indoor unit control window.
 - ◆ Tap the indoor unit again to deselect.
 - ◆ To control indoor units, refer to "Controlling Individual Indoor Units." (See pages 24~25)

Controlling All the Indoor Units

! Tap [Indoor unit control] on the Main menu.

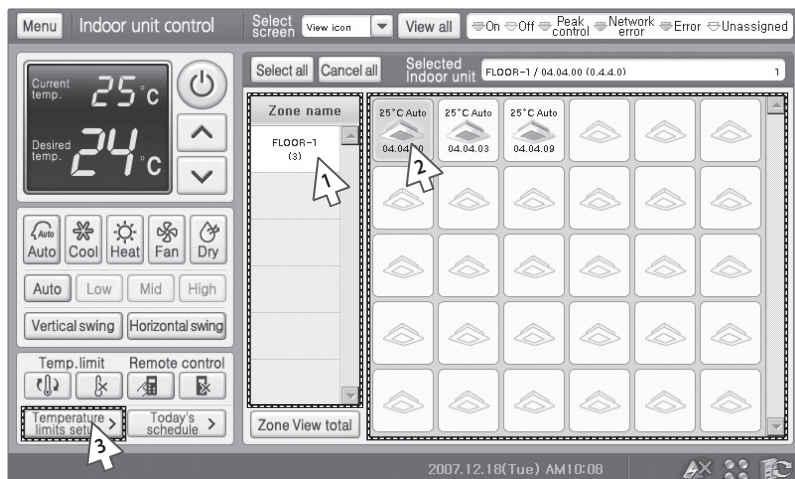


- 1 Select a zone from the Zone name list.
 - ◆ All the indoor units under selected zone will be displayed on Indoor unit display window.
- 2 Tap [Select all].
 - ◆ You can check all the indoor units you have selected on Indoor units display window
 - ◆ Current status of selected indoor unit will be displayed on the Indoor unit control window.
 - ◆ Tap [Cancel all] to deselect all indoor units.
 - ◆ To control indoor units, refer to "Controlling Individual Indoor Units." (See pages 24~25)

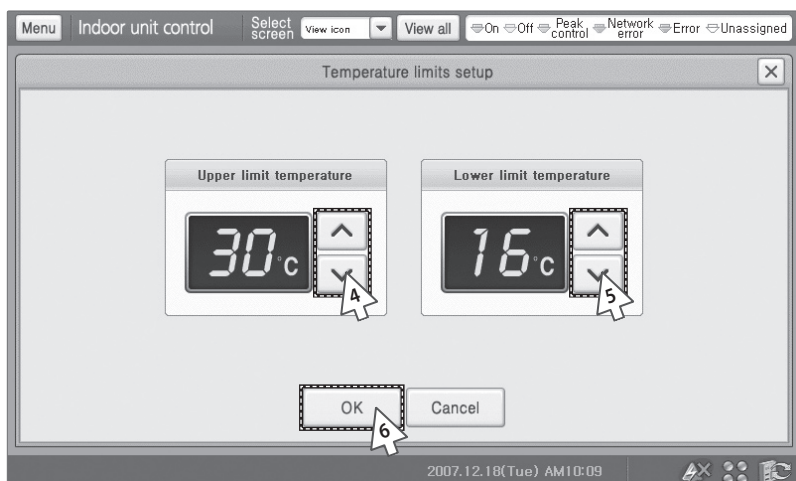
Indoor Unit Control (Continued)

Setting Up the Temperature Limit

! Tap [Indoor unit control] on the Main menu.



- 1 Select a zone from the Zone name list.
 - ◆ All the indoor units under selected zone will be displayed on Indoor unit display window.
- 2 Select an indoor unit to be controlled from the indoor unit display.
 - ◆ Zone name and the indoor unit name will be displayed the Selected Indoor unit display.
 - ◆ Current status of selected indoor unit will be displayed on the Indoor unit control window.
 - ◆ Tap the indoor unit again to deselect.
- 3 Tap [Temperature limits setup >].

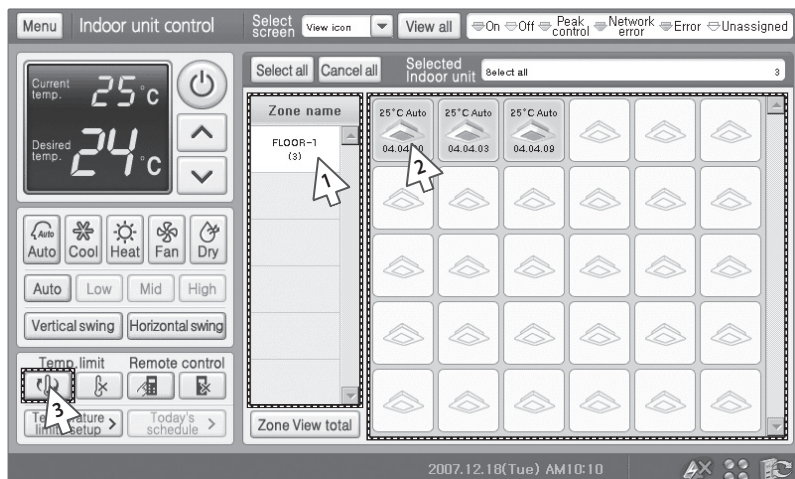



- 4 When the Temperature limit setup window pops up, tap [^] or [V] to set up the Upper limit temperature.
 - ◆ You can set the upper limit temperature by S-NET mini.
- 5 Tap [^] or [V] to set up the Lower limit temperature.
 - ◆ You can set the lower limit temperature by S-NET mini.
- 6 Tap [OK].
 - ◆ Upper/Lower limit temperature will be save onto S-NET mini.
 - ◆ It is restricted to set the maximum temperature for a user with wired/wireless remote controllers.

Indoor Unit Control (Continued)

Applying the Temperature Limit

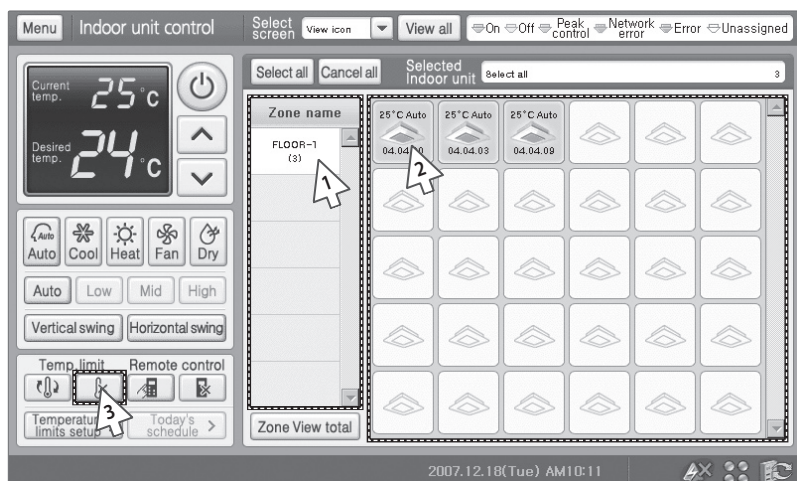
! Tap [Indoor unit control] on the Main menu.




- 1 Select a zone from the Zone name list.
 - ◆ All the indoor units under selected zone will be displayed on Indoor unit display window.
- 2 Select an indoor unit to be controlled from the indoor unit display.
 - ◆ Zone name and the indoor unit name will be displayed on the Selected Indoor unit display.
 - ◆ Current status of selected indoor unit will be displayed on the Indoor unit control window.
 - ◆ Tap the indoor unit again to deselect.
- 3 Tap 
 - ◆ Set temperature limit will be applied.
 - ◆ It is restricted to set the maximum temperature for a user with wired/wireless remote controllers.

Canceling the Temperature Limit

! Tap [Indoor unit control] on the Main menu.

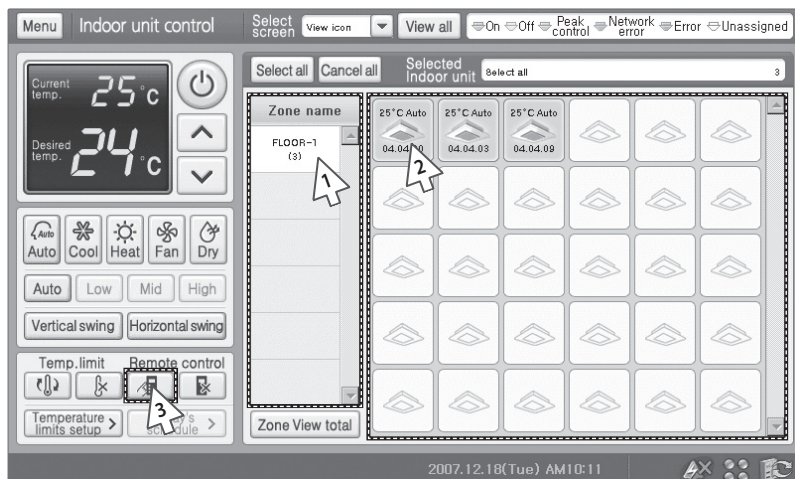




- 1 Select a zone from the Zone name list.
 - ◆ All the indoor units under selected zone will be displayed on Indoor unit display window.
- 2 Select an indoor unit to be controlled from the indoor unit display.
 - ◆ Zone name and the indoor unit name will be displayed on the Selected Indoor unit display.
 - ◆ Current status of selected indoor unit will be displayed on the Indoor unit control window.
 - ◆ Tap the indoor unit again to deselect.
- 3 Tap 
 - ◆ Set temperature limit will be canceled.
 - ◆ Temperature can be set between 18°C and 30°C by 1°C in Auto/Cool/Dry mode and 16°C and 30°C by 1°C in Heat mode.

Indoor Unit Control (Continued)

Enable Wired/Wireless Remote Control

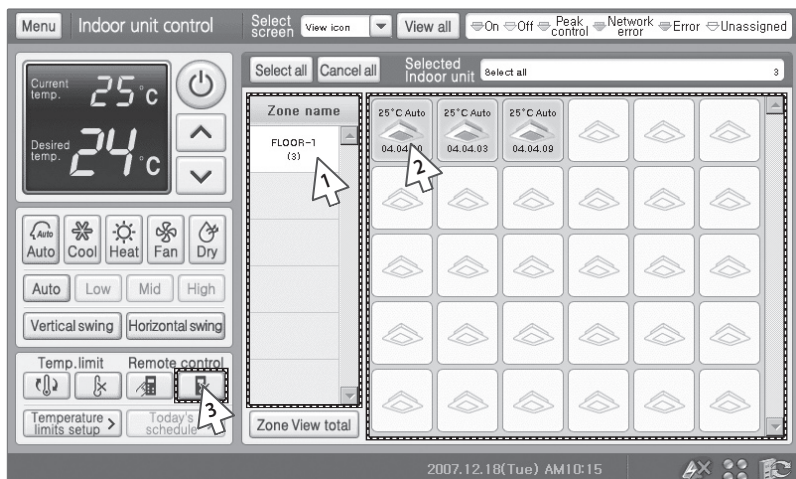
! Tap [Indoor unit control] on the Main menu.





- 1 Select a zone from the Zone name list.
 - ◆ All the indoor units under selected zone will be displayed on Indoor unit display window.
- 2 Select an indoor unit to be controlled from the indoor unit display.
 - ◆ Zone name and the indoor unit name will be displayed on the Selected Indoor unit display.
 - ◆ Current status of selected indoor unit will be displayed on the Indoor unit control window.
 - ◆ Tap the indoor unit again to deselect.
- 3 Tap 
 - ◆ Individual wired/wireless remote controller can control indoor units.
 - ◆ To disable wired/wireless remote control, tap .


Disable Wired/Wireless Remote Control

! Tap [Indoor unit control] on the Main menu.



- 1 Select a zone from the Zone name list.
 - ◆ All the indoor units under selected zone will be displayed on Indoor unit display window.
- 2 Select an indoor unit to be controlled from the indoor unit display.
 - ◆ Zone name and the indoor unit name will be displayed on the Selected Indoor unit display.
 - ◆ Current status of selected indoor unit will be displayed on the Indoor unit control window.
 - ◆ Tap the indoor unit again to deselect.
- 3 Tap 
 - ◆ Individual wired/wireless remote controller cannot control indoor units. You may only control the indoor unit from the S-NET mini indoor unit control menu.
 - ◆ To Enable wired/wireless remote control, tap .

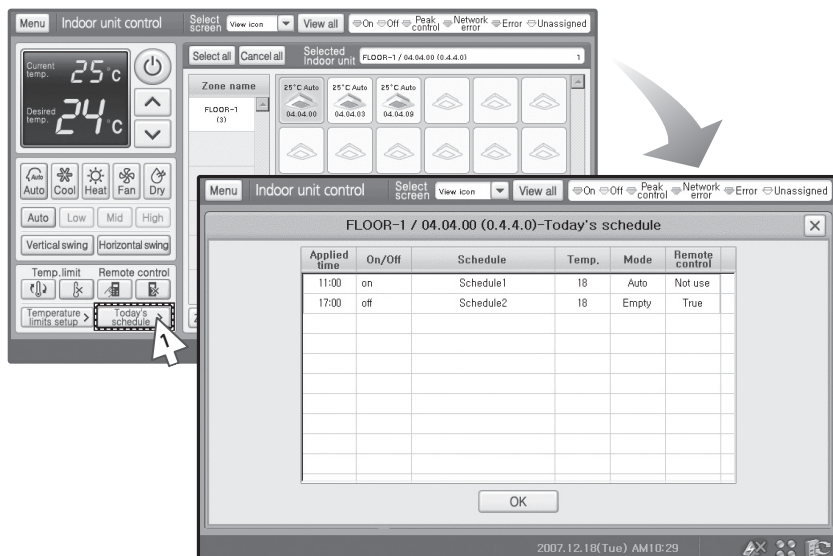
Note

- ◆ If S-NET mini is turned off with the wired/wireless remote control option disabled, individual indoor units become unable to operate.
- ◆ To control the individual indoor units, tap  to enable the wired/wireless remote control.

Indoor Unit Control (Continued)

Checking Today's Schedule

! Tap [Indoor unit control] on the Main menu.



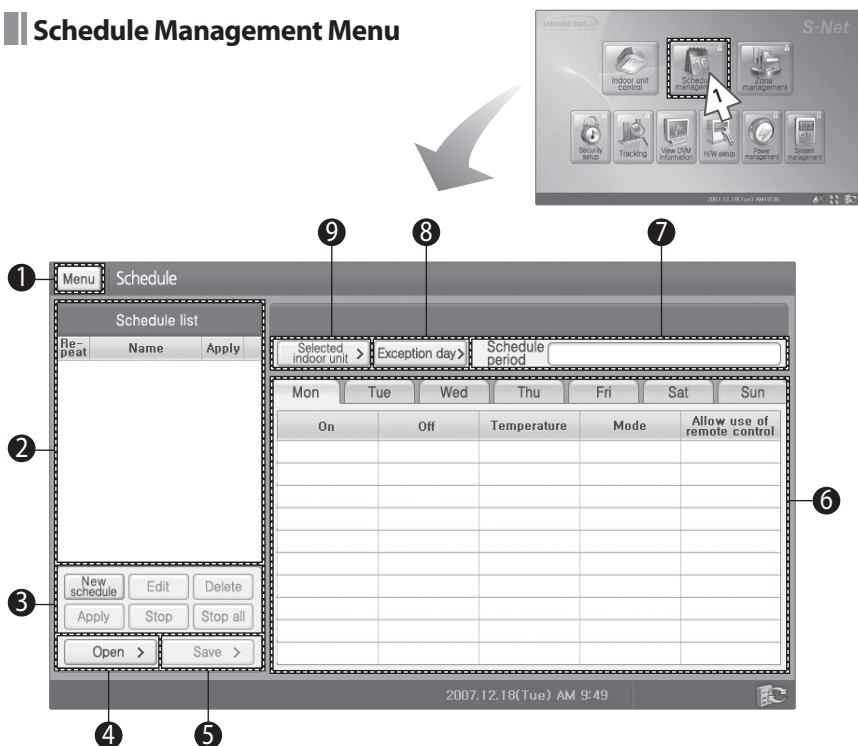
- 1 Select an indoor unit to be controlled from the indoor unit display and tap [Today's schedule >].
 - ◆ Zone name and the indoor unit name will be displayed on the Selected Indoor unit display.
 - ◆ Current status of selected indoor unit will be displayed on the Indoor unit control window.
 - ◆ Tap the indoor unit again to deselect.
- 2 Check today's schedule when the list appears.
 - ◆ You may check the applied time, indoor unit On/Off status, schedule name, desired temperature, operation mode and remote control restriction.
 - ◆ Tap [OK] after checking the schedule and you will return to Indoor unit control menu.

Caution

Select single indoor unit to check today's schedule accurately.

Schedule Management

Schedule Management Menu



1 Tap [Schedule management] on the Main menu.

◆ Check the schedule management menu.

No.	Remarks
1	Return to main menu
2	Schedule list (Repeat, Name, Apply)
3	Create new schedule
	Edit schedule
	Delete schedule
	Apply selected schedule
	Stop selected schedule
	Stop all schedules

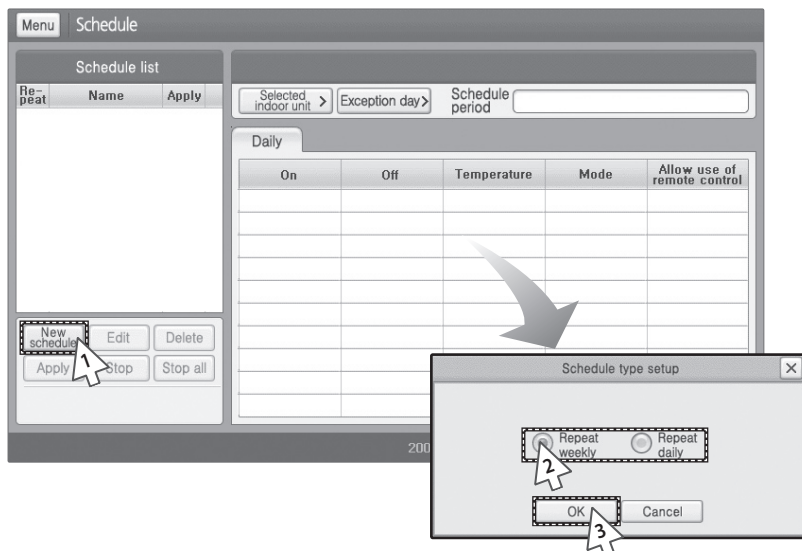
No.	Remarks
4	Open saved schedule (in CSV file)
5	Save schedule (in CSV file)
6	Check weekly schedule settings (On, Off, Temperature, Mode, Allow use of remote control)
7	Shows schedule period
8	Set up Exception day
9	View selected indoor unit

Note Open and Save function is only supported when Centralized controller & Transmitter is selected as communication device.

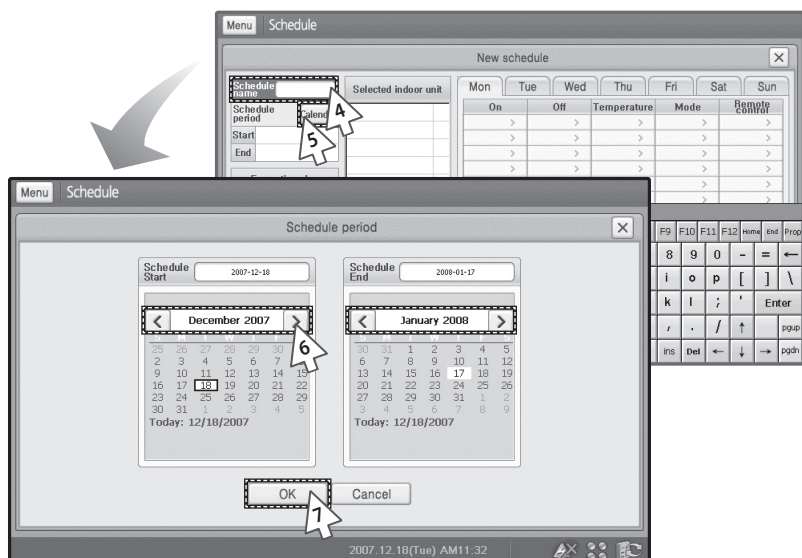
Schedule Management (Continued)

Creating New Schedules

! Tap [Schedule management] on the Main menu.



- 1 Tap [New schedule] on the Schedule management menu.
- 2 Set up the repeat option from Schedule type setup window.
 - ◆ You may select either 'Repeat weekly' or 'Repeat daily'.
- 3 Tap [OK] from the Schedule type setup window.
 - ◆ New schedule menu will pop up with the selected repeat option.
 - ◆ To cancel the selected repeat option, tap [Cancel].



- 4 Enter a name of the schedule from the New schedule menu.

- ◆ You may use soft keyboard to enter a schedule name.
(See pages 100~101)

- 5 Tap [Calendar].

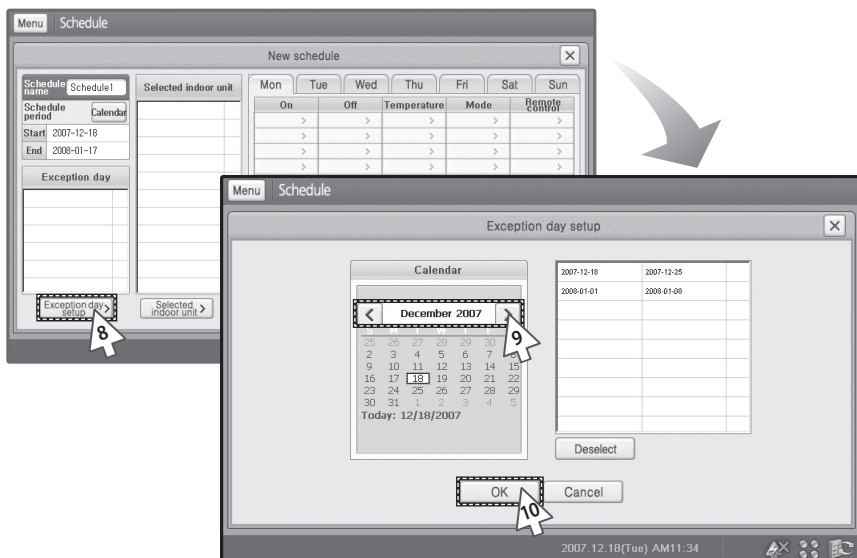
- 6 Tap [<] or [>] to select year, month and then select the day.

- ◆ Start day must be sooner than the end day.

- 7 Tap [OK] when the setting is done.

- ◆ To cancel the Schedule period, tap [Cancel].

Schedule Management (Continued)



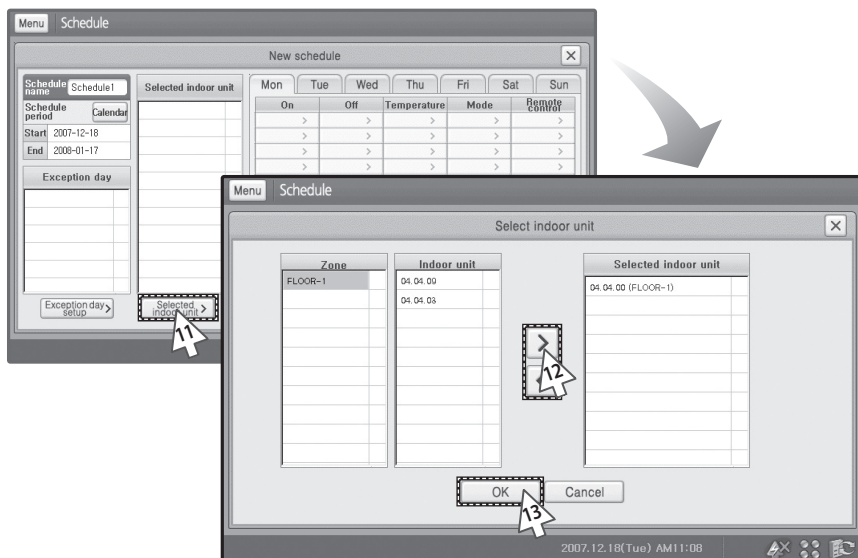
8 Tap [Exception day setup>] on the New schedule menu.

9 Tap [<] or [>] to select year, month and then select the day.

- ◆ Exception day can be setup with the schedule period.
- ◆ To cancel the Exception day, select the exception day from the list and tap [Deselect].

10 Tap [OK] when the setting is done.

- ◆ Exception days will be omitted from the applied schedule.
- ◆ To cancel the exception days, tap [Cancel]



11 Tap [Selected indoor unit>] on the New schedule menu.

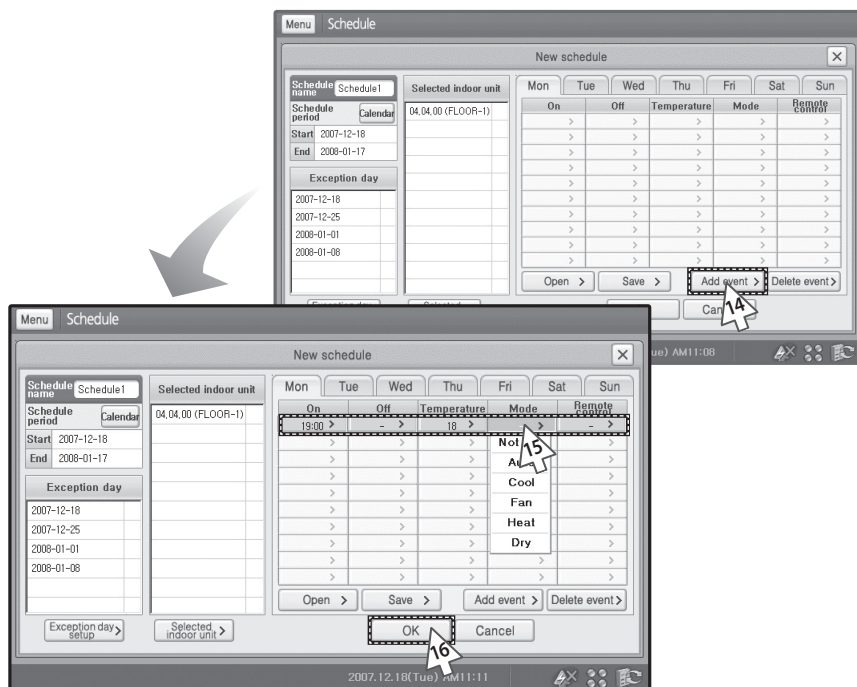
12 Tap [<] or [>] to select an indoor unit.

- ◆ Select zone and the indoor unit and tap [>] to select an indoor unit.
- ◆ Select an indoor unit from the Selected indoor unit list and tap [<] to cancel the selection.

13 Tap [OK] when the setting is done.

- ◆ To cancel indoor unit selections, tap [Cancel].

Schedule Management (Continued)



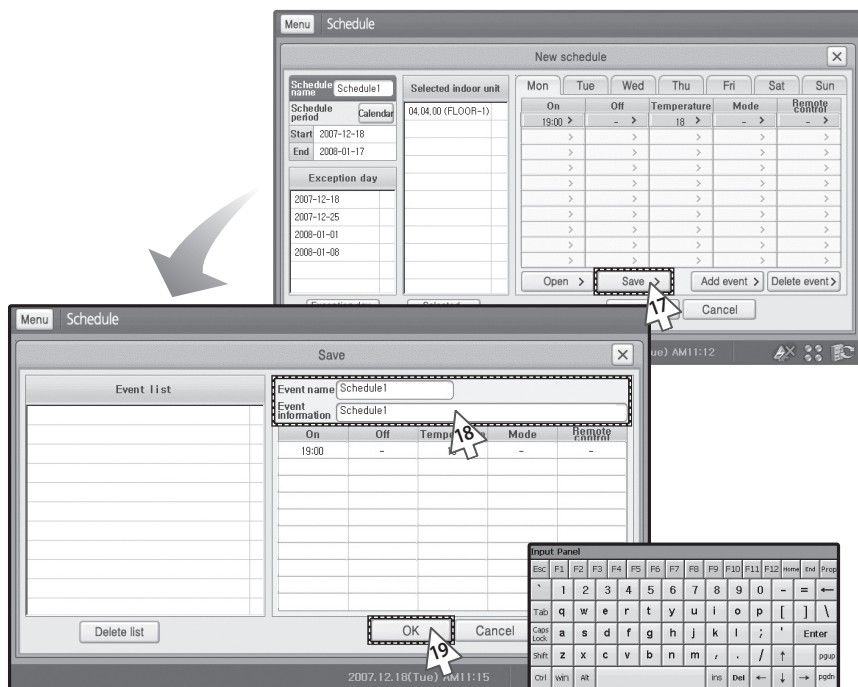
14 Tap [Add event>] on the New schedule menu.

15 Select a event detail.

- ◆ You can set up the indoor unit On/Off status, desired temperature, operation mode and remote control restriction
- ◆ You can add daily event if you have set up weekly repeat option.

16 Tap [OK] when the setting is done.

- ◆ To cancel adding event, tap [Cancel].



17 Tap [Save >] to save an event.

- ◆ Save window will appear to save event.
- ◆ The save unit is one day. Also in case of every week schedule, save in one day unit.
- ◆ If you want to open a saved event, tap [Open].
The open unit is one day. Also in case of every week schedule, open in one day unit.

18 Enter event name and information.

- ◆ You may use soft keyboard to enter an event name and information. (See pages 100~101)
- ◆ To delete saved event, select an event and tap [Delete event>].

19 Tap [OK] to save the event.

- ◆ Event will be saved with the previously chosen event name.
- ◆ To cancel saving, tap [Cancel].

Note

- ◆ You can set maximum 10 events per schedule in a day.
(Daily repeat: Maximum 10, Weekly repeat: Maximum 70)
- ◆ Exception days cannot exceed 365 days.

Schedule Management (Continued)

Edit Schedules

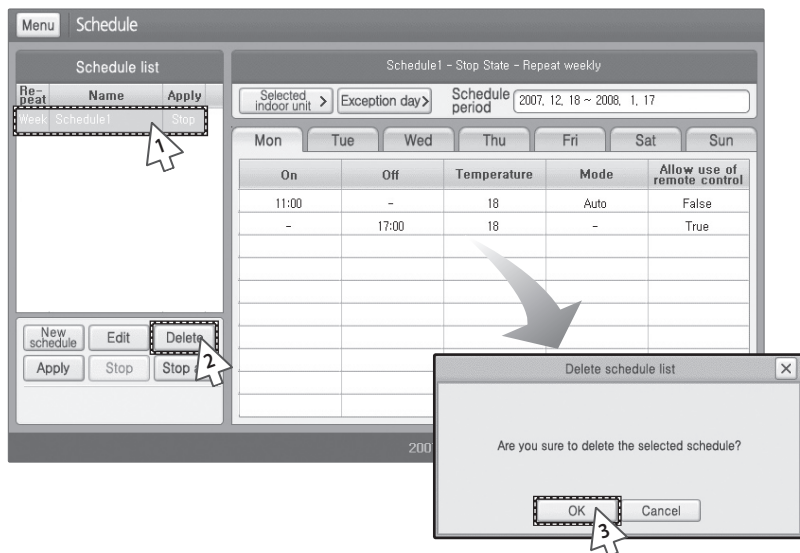
! Tap [Schedule management] on the Main menu.

[illegible]

- 1 Select a schedule to be edited from the schedule menu.
 - ◆ If the schedule is in progress, tap [Stop] to stop the schedule before editing.
- 2 Tap [Edit].
 - ◆ Editing schedule method is same as “Creating New Schedule” (See pages 36~41)

Delete Schedules

! Tap [Schedule management] on the Main menu.



1 Select a schedule to be deleted from the schedule menu.

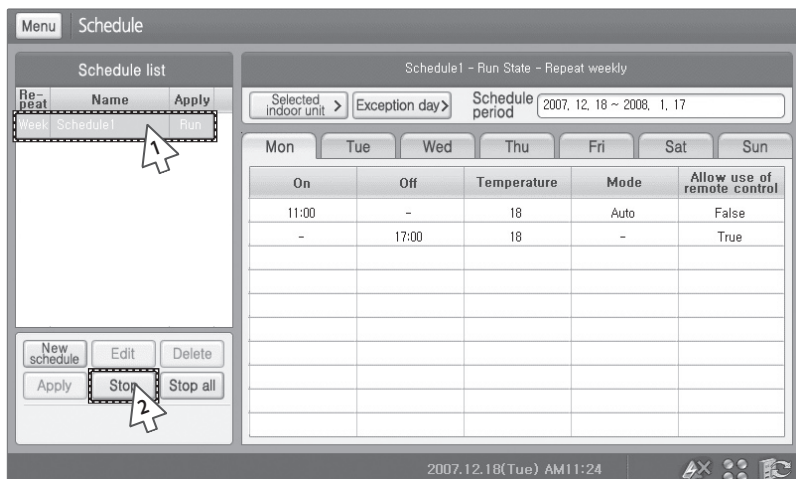
2 Tap [Delete].

3 Tap [OK] from the Delete schedule list window.

- ◆ Selected schedule will be deleted.
- ◆ To cancel deleting schedule, tap [Cancel].

Stop Schedules

! Tap [Schedule management] on the Main menu.



- 1 Select a schedule to be stopped from the schedule menu
 - ◆ Selected schedule should be in Run state.
- 2 Tap [Stop].
 - ◆ Selected schedule will change its status to Stop state.

Schedule Management (Continued)

Stop all Schedules

! Tap [Schedule management] on the Main menu.

The screenshot shows the 'Schedule' management screen. On the left, under 'Schedule list', there is a table with columns 'Repeat', 'Name', and 'Apply'. It lists 'Schedule1' (Weekly) and 'Schedule2' (Daily), both with 'Stop' in the 'Apply' column. Below this table are buttons for 'New schedule', 'Edit', 'Delete', 'Apply', 'Stop', and 'Stop all'. The 'Stop all' button is highlighted with a dashed border and a mouse cursor. On the right, the 'Schedule1 - Stop State - Repeat weekly' section shows a 'Selected indoor unit' dropdown, an 'Exception day' dropdown, and a 'Schedule period' field set to '2007. 12. 18 ~ 2008. 1. 17'. Below this is a table with columns for days of the week (Mon-Sun) and rows for 'On', 'Off', 'Temperature', 'Mode', and 'Allow use of remote control'. The 'On' and 'Off' columns show times (11:00 and 17:00 respectively). The 'Temperature' column shows '18'. The 'Mode' column shows 'Auto' and '-'. The 'Allow use of remote control' column shows 'False' and 'True'. At the bottom, the status bar shows '2007.12.18(Tue) AM11:28' and system icons.

Repeat	Name	Apply
Week	Schedule1	Stop
Daily	Schedule2	Stop

New schedule Edit Delete Apply Stop Stop all

Schedule1 - Stop State - Repeat weekly

Selected indoor unit > Exception day > Schedule period 2007. 12. 18 ~ 2008. 1. 17

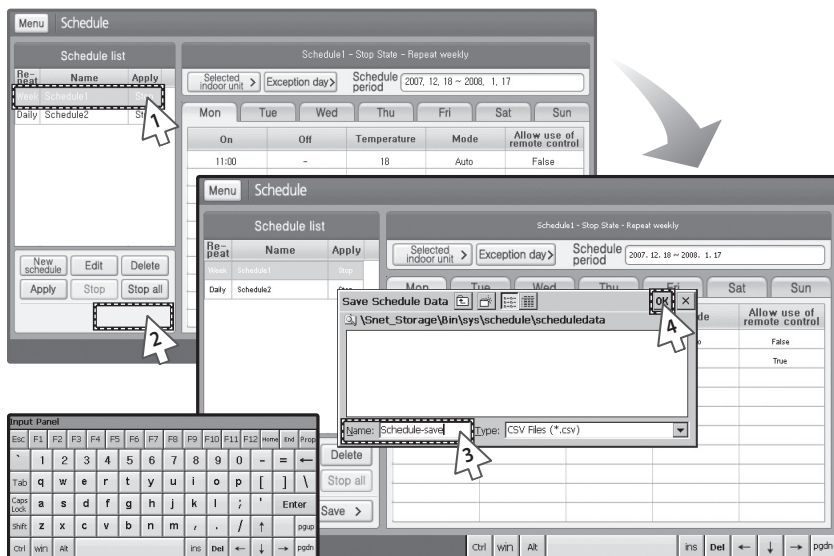
Mon	Tue	Wed	Thu	Fri	Sat	Sun
On	Off	Temperature	Mode	Allow use of remote control		
11:00	-	18	Auto	False		
-	17:00	18	-	True		

2007.12.18(Tue) AM11:28

- 1 Tap [Stop all] from the schedule menu.
 - ◆ All the schedules in Run state will stop.

Saving Schedules

! Tap [Schedule management] on the Main menu.



1 Select a schedule to be saved from the schedule menu.

2 Tap [Save>].

3 Enter the name of the schedule to be saved.

- ◆ If soft keyboard blocks the view, you may drag soft keyboard out of the way.
- ◆ You may use soft keyboard to enter a file name.
(See pages 100~101)
- ◆ You should select file type to CSV.

4 Tap [OK].

- ◆ To cancel saving the schedule, tap [X].

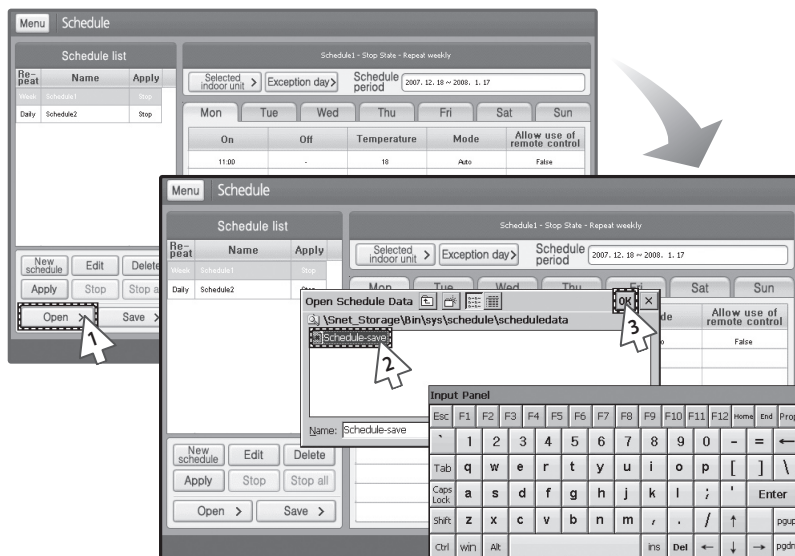
Note ◆ *Saving schedule function is only supported when Centralized controller & Transmitter is selected as communication device.*

- ◆ *Saving schedule in New schedule menu is same as above method.*

Schedule Management (Continued)

Opening Schedule

! Tap [Schedule management] on the Main menu.



1 Tap [Save>] from the schedule menu.

◆ You can open the saved files in CSV type.

2 Select a CSV file to be opened.

◆ If soft keyboard blocks the view, you may drag soft keyboard out of the way.

3 Tap [OK].

◆ To cancel opening the schedule, tap [x].

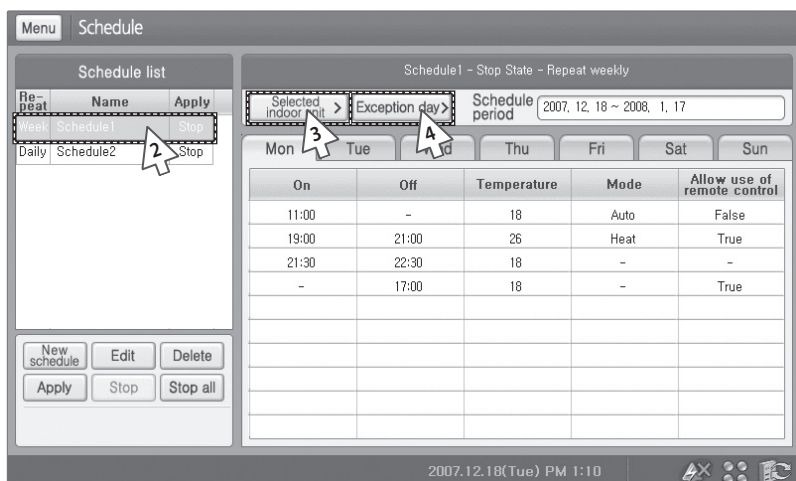
Note

◆ Opening schedule function is only supported when Centralized controller & Transmitter is selected as communication device.

◆ Opening schedule in New schedule menu is same as above method.

Viewing Schedule

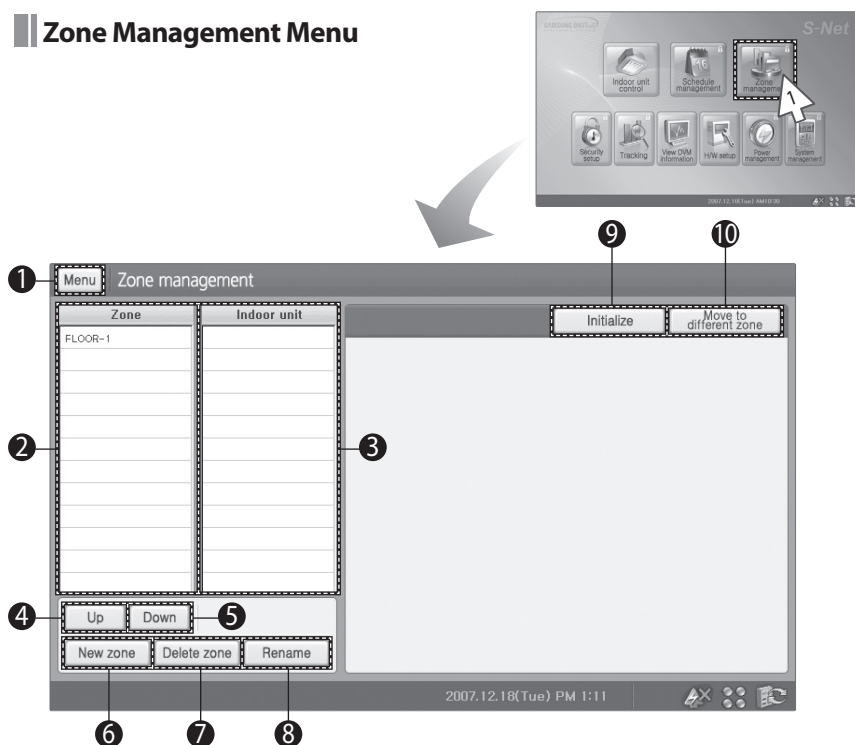
! Tap [Schedule management] on the Main menu.



- 1 Check the schedule list from the schedule menu.
 - ◆ You can check repeat option, name, and the apply status.
- 2 Check the schedule from the schedule list.
 - ◆ You can check the weekly schedule settings.
- 3 Tap [Selected indoor unit>] to check the indoor units applied with the selected schedule.
- 4 Tap [Exception day>] to check the exceptional days.

Zone Management

Zone Management Menu



1 Tap [Zone management] on the Main menu.

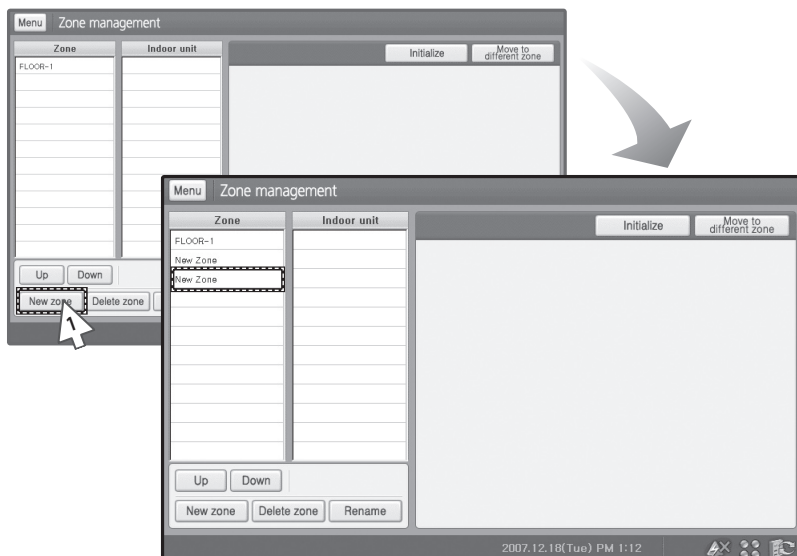
◆ Check the Zone management menu.

No.	Remarks
1	Return to Main menu
2	Zone list
3	Indoor unit list
4	Move selected zone up
5	Move selected zone down

No.	Remarks
6	Create new zone
7	Delete selected zone
8	Rename zone/indoor unit
9	Initialize zone structure
10	Move selected indoor unit to different zone

Creating a New Zone

! Tap [Zone management] on the Main menu.

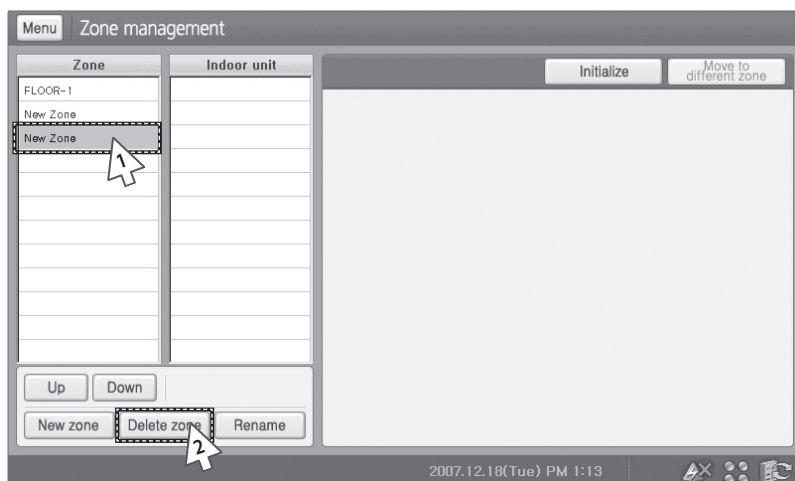


- 1 Tap [New zone] from the zone management menu.
- 2 New Zone will appear on the Zone list.

Zone Management (Continued)

Deleting a New Zone

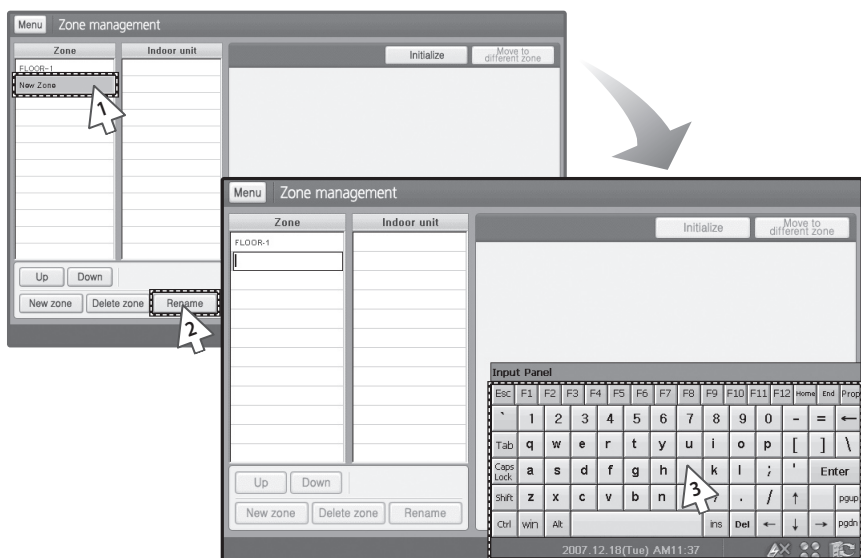
! Tap [Zone management] on the Main menu.



- 1 Select a Zone to be deleted from the Zone management menu.
 - ◆ Selected zone with one or more indoor units cannot be deleted.
Move all the indoor units to other zone then proceed deleting.
- 2 Tap [Delete zone].
 - ◆ Selected zone will be deleted.

Renaming a New Zone/Indoor Unit

! Tap [Zone management] on the Main menu.



- 1 Select a zone to be renamed from the Zone management menu.
- 2 Tap [Rename].
- 3 Change the name of the zone/indoor unit.
 - ◆ You may use soft keyboard to rename a zone/indoor unit. (See pages 100~101)

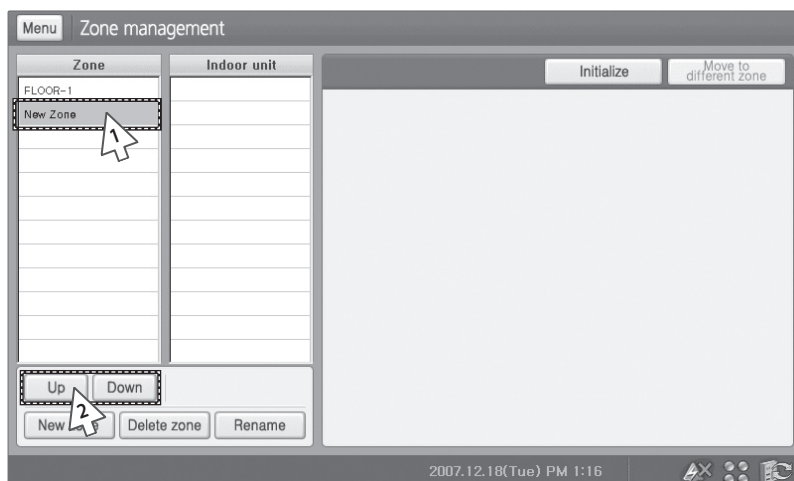
Caution

Name of the zone can be maximum 32 letters long. Special character or symbols (\, /, ;, *, ?, ", ', <, >) cannot be used in a name.

Zone Management (Continued)

Moving a Zone/Indoor unit

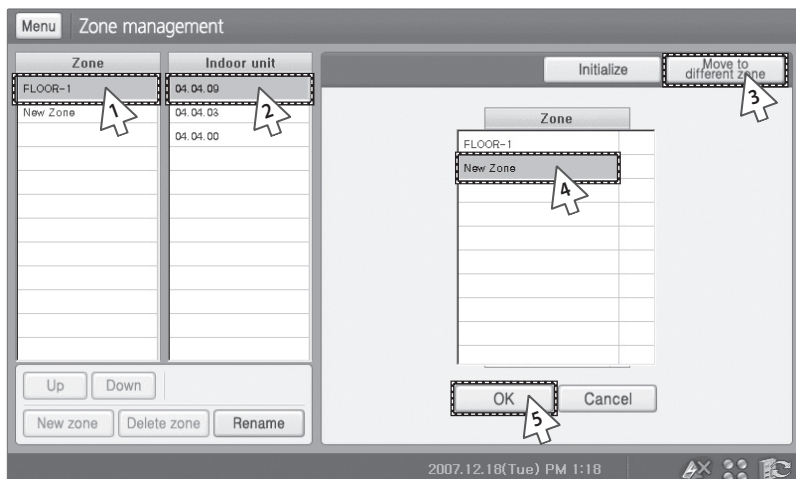
! Tap [Zone management] on the Main menu.



- 1 Select a zone/indoor unit to rename.
 - ◆ You can select one zone at a time.
 - ◆ Indoor unit can only be moved within a zone.
- 2 Tap [Up] or [Down] to move selected zone/indoor unit to desired location.

Moving Indoor Unit to a Different Zone

! Tap [Zone management] on the Main menu.



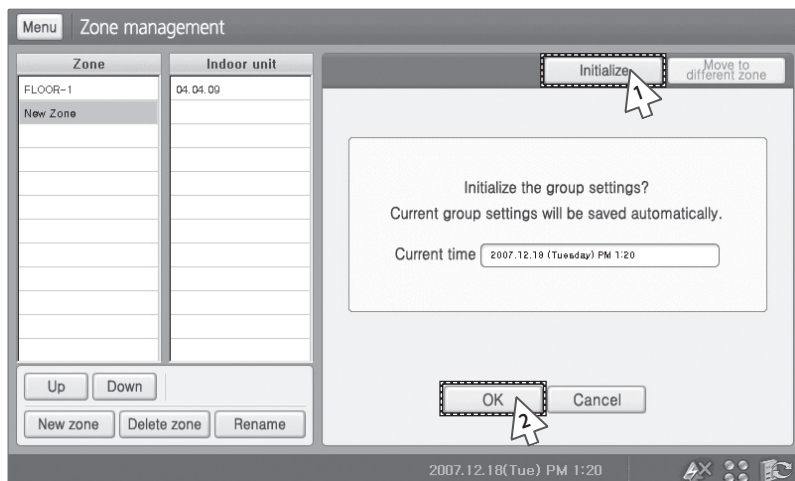
- 1 Select a zone from Zone management menu.
- 2 Select an indoor unit to be moved to a different zone.
- 3 Tap [Move to different zone].
- 4 When the other zone list appears, select different zone where indoor unit will be move.
- 5 Tap [OK].
 - ◆ To cancel moving the indoor unit to a different zone, tap [Cancel].

Note Individual zone can contain maximum 64 indoor units.

Zone Management (Continued)

Initialize Zone Management

! Tap [Zone management] on the Main menu.



1 Tap [Initialize] from the Zone management menu

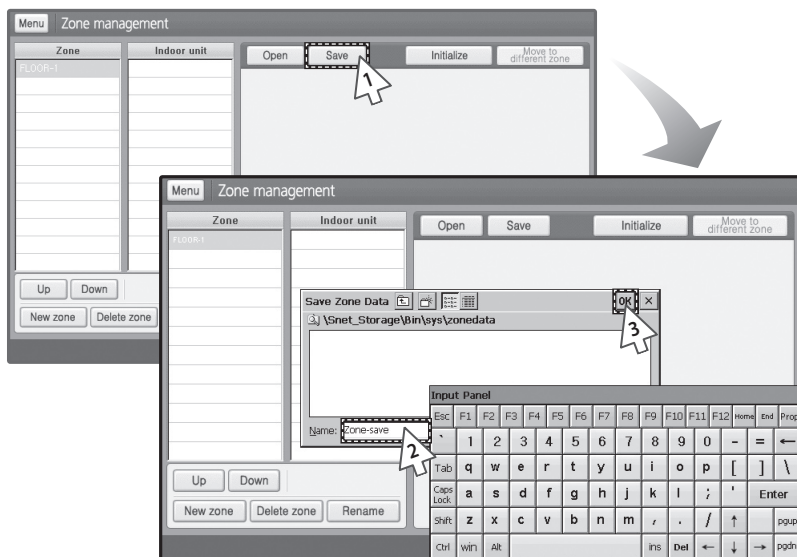
2 Tap [OK].

◆ Your zone management setting will be initialized.

Note If you have executed tracking or number of indoor units changes, saved zone will disappear even though you have saved your zone.

Saving Zone Management

! Tap [Zone management] on the Main menu.



- 1 After setting up the zone structure, tap [Save] to save setting.
- 2 Select a place to save the file and enter a file name.
 - ◆ You may use soft keyboard to enter name of the new zone. (See pages 100~101)
 - ◆ You should select file type to CSV.
- 3 Tap [OK].
 - ◆ Selected zone management will be saved as CSV file.
 - ◆ To cancel saving, tap [X].

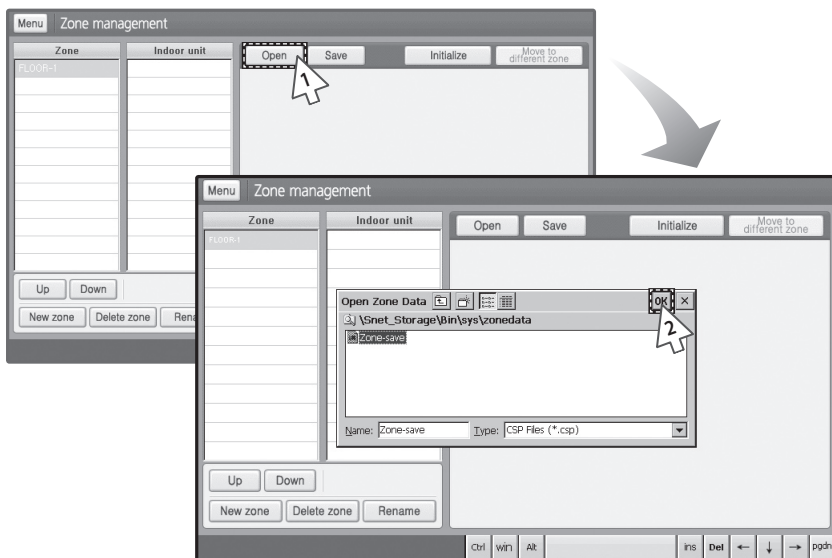
Note ◆ When you tap [Save] after any changes have been occurred, program will not automatically replace the file. Instead, program will save under new file name. Therefore if you want to save the changed zone management, manually replace the file by entering the existing save file name or save the file after all changes have been made.

◆ Saving Zone management is only supported when Centralized controller & Transmitter is selected as communication device.

Zone Management (Continued)

Opening Zone Management

! Tap [Zone management] on the Main menu.

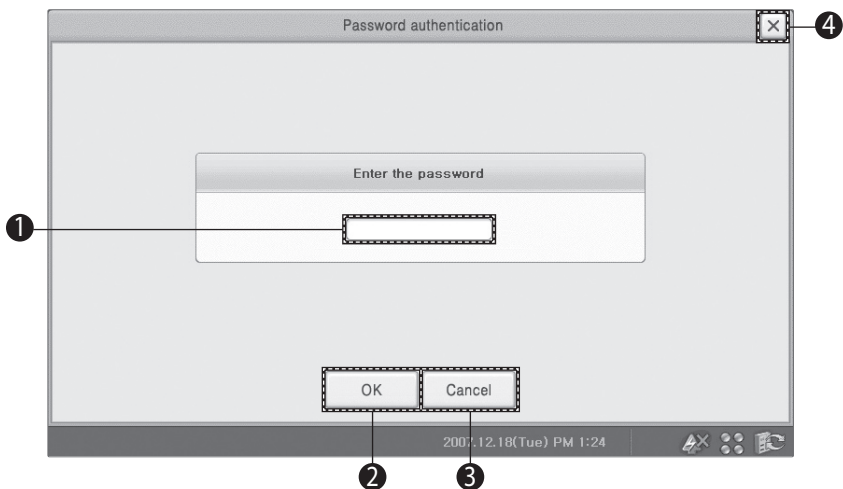


- 1 Tap [Open] from the Zone management menu.
 - ◆ You can open the saved files in CSV type.
- 2 Select CSV file to be opened and tap [OK].
 - ◆ Selected CSV file will bring up the Zone management group.
 - ◆ To cancel opening, tap [X].

Note Opening Zone management is only supported when Centralized controller & Transmitter is selected as communication device.

Security Setup

Security Setup Menu



1 Tap [Security setup] on the main menu.

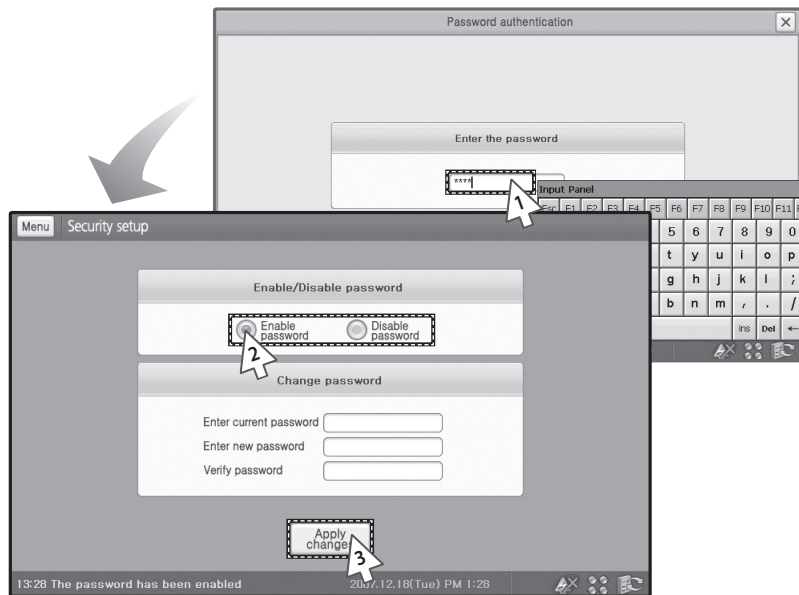
◆ Check the Security setup menu.


No.	Remarks
1	Enter security password
2	OK button
3	Cancel button
4	Return to main menu

Security Setup (Continued)

Enable/Disable Password

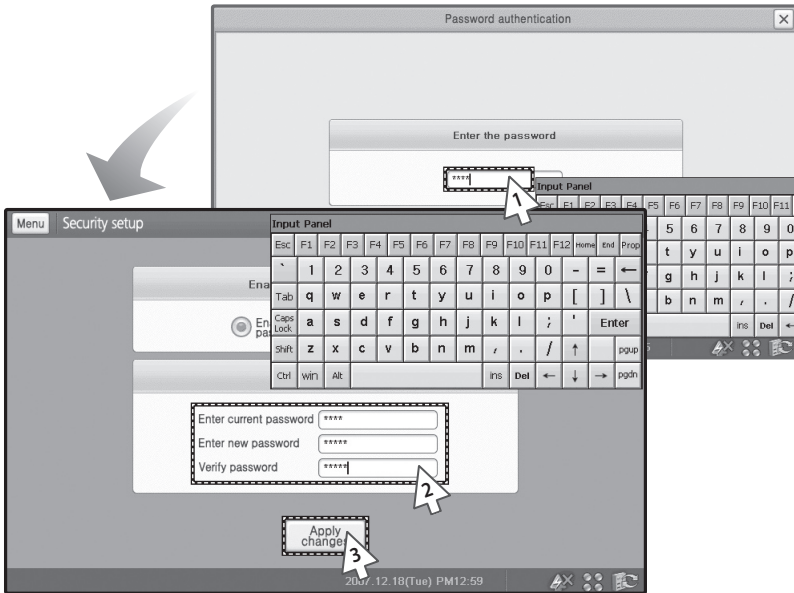
! Tap [Security setup] on the Main menu.



- 1 Enter a password and tap [OK] from the Security setup menu.
 - ◆ You may use soft keyboard to enter a password.
(See pages 100~101)
- 2 Select Password status.
 - ◆ You can either enable or disable the password.
 - ◆ If you enable password, you will need to enter the password to access menu with  (Lock).
 - ◆ If you disable password, you can use menu without entering the password.
- 3 Tap [Apply changes].
 - ◆ Applied password status will be saved.

Changing Password

! Tap [Security setup] on the Main menu.



- 1 Enter a password and tap [OK] from the Security setup menu.
 - ◆ You may use soft keyboard to enter a password. (See pages 100~101)
- 2 Enter a current password and a new password then, verify the password.
 - ◆ You may use soft keyboard to enter a password. (See pages 100~101)
- 3 Tap [Apply changes].
 - ◆ New password will be applied.

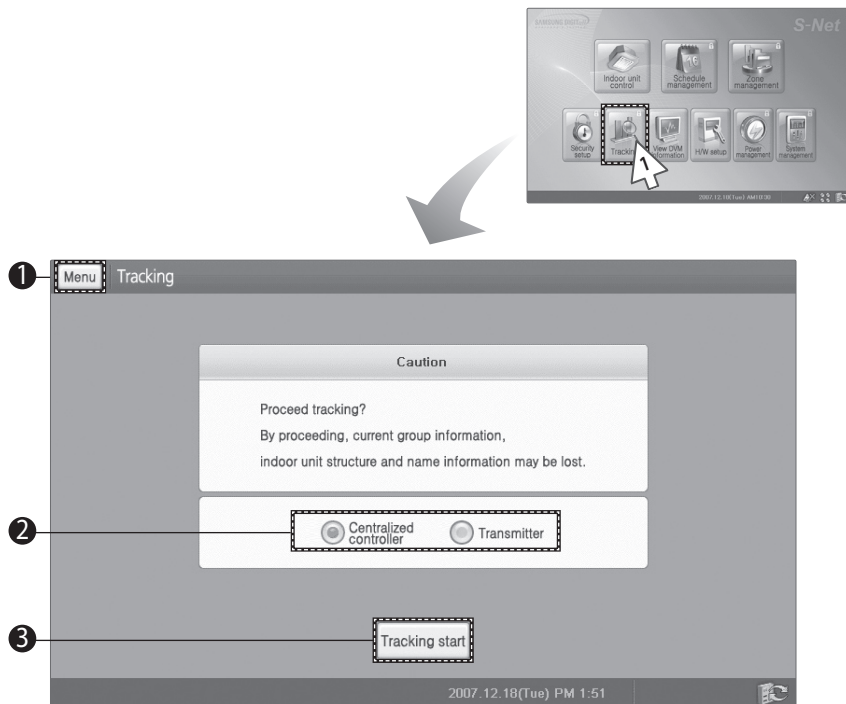
Note ◆ *Current password, new password and verifying password have to be accurate.*
◆ *Initial password for S-NET mini is '0000'*

Caution

If you forget password, you cannot change the password status option or change to a new password. Be considerate when you choose a password.

Tracking Menu

Centralized controller & Transmitter is set as communication device

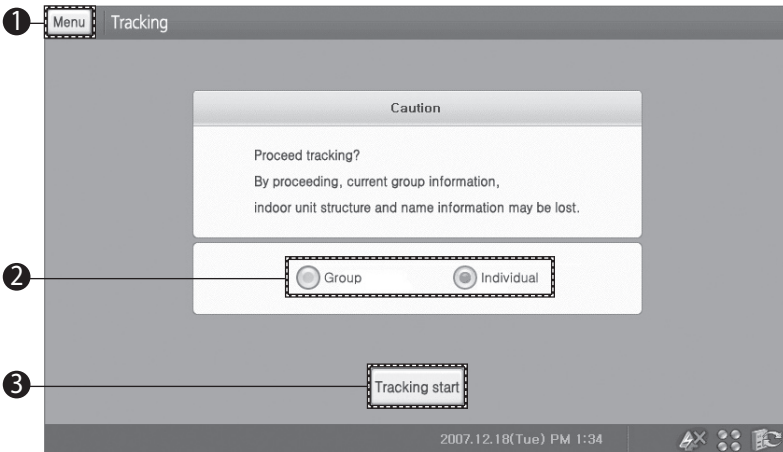


1 Tap [Tracking] from the main menu.

- ◆ Check the Tracking menu.
- ◆ Tracking menu window may appear different depending on the communication devices.
When Centralized controller & Transmitter is set as communication device, see pages 64~65.

No.	Remarks
1	Return to main menu
2	Select a device for tracking (Centralized controller, Transmitter)
3	Tracking start button

DMS is set as communication device



- 1 Tap [Tracking] from the main menu.
 - ◆ Check the Tracking menu.
 - ◆ Tracking menu window may appear different depending on the communication devices.
When DMS is set as communication device, see pages 66~67.

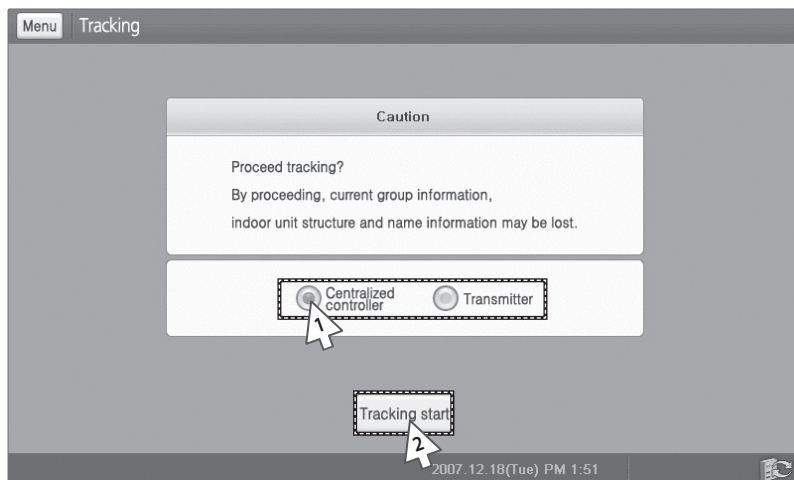
No.	Remarks
1	Return to main menu
2	Select a tracking mode (Group, Individual)
3	Tracking start button

Tracking (Continued)

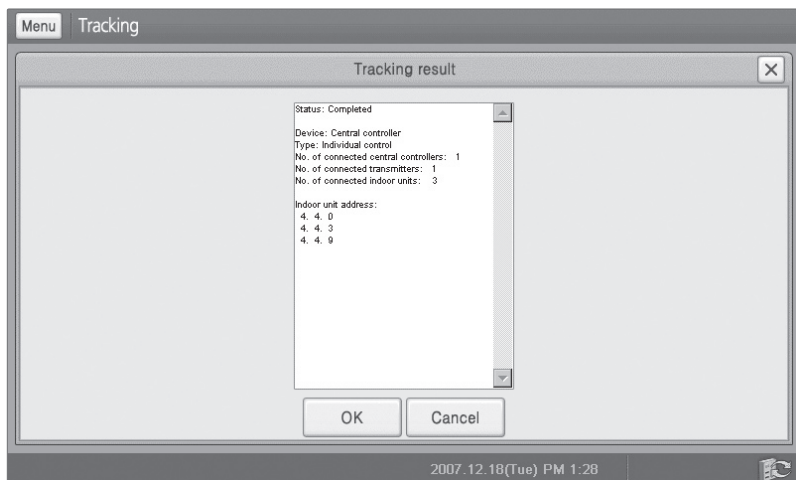
Execute Tracking

! Tap [Tracking] on the Main menu.

Centralized controller & Transmitter are set as communication device.



- 1 Select a device for tracking from the tracking menu.
 - ◆ You can select either Centralized controller or Transmitter.
- 2 Tap [Tracking start].
 - ◆ Tracking will start with selected device.



3 Tracking will start.

- ◆ You cannot use any other function while in tracking.
- ◆ It may take few minutes for tracking depending on the amount of information on the device.

4 Check the tracking result.

- ◆ Result will show connected device and the indoor unit information.

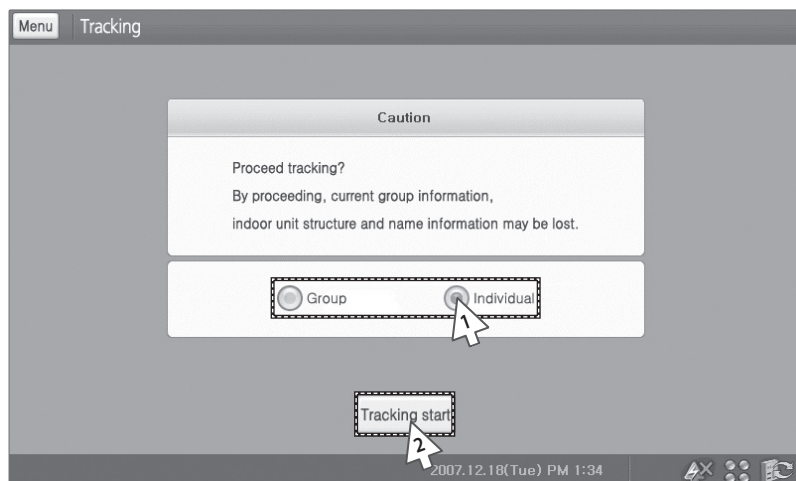
5 Tap [OK].

- ◆ System will be configured with new information.
- ◆ To disregard the tracking result, tap [Cancel].

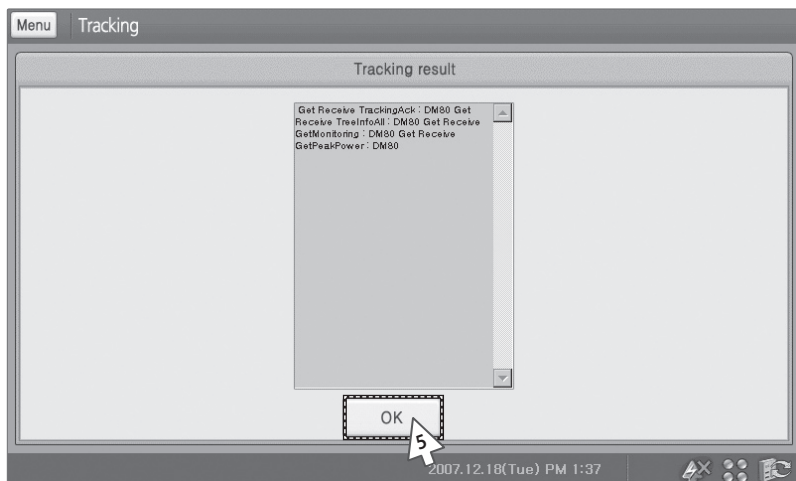
-
- Note**
- ◆ *Be aware that when tracking is in progress, some of the information can get missing.*
 - ◆ *When the tracking result is incorrect or does not show, check the communication status or communication device selection.*

Tracking (Continued)

DMS is set as communication device.



- 1 Select a tracking mode from the tracking menu.
 - ◆ Group mode: Track information on representing indoor unit within a group assigned to S-NET mini.
 - ◆ Individual mode: Track information on all the indoor units connected.
- 2 Tap [Tracking start].
 - ◆ Tracking will start with selected device.



3 Tracking will start.

- ◆ You cannot use any other function while in tracking.
- ◆ It may take few minutes for tracking depending on the amount of information on the device.

4 Check the tracking result.

- ◆ Result will show connected device and the indoor unit information.

5 Tap [OK].

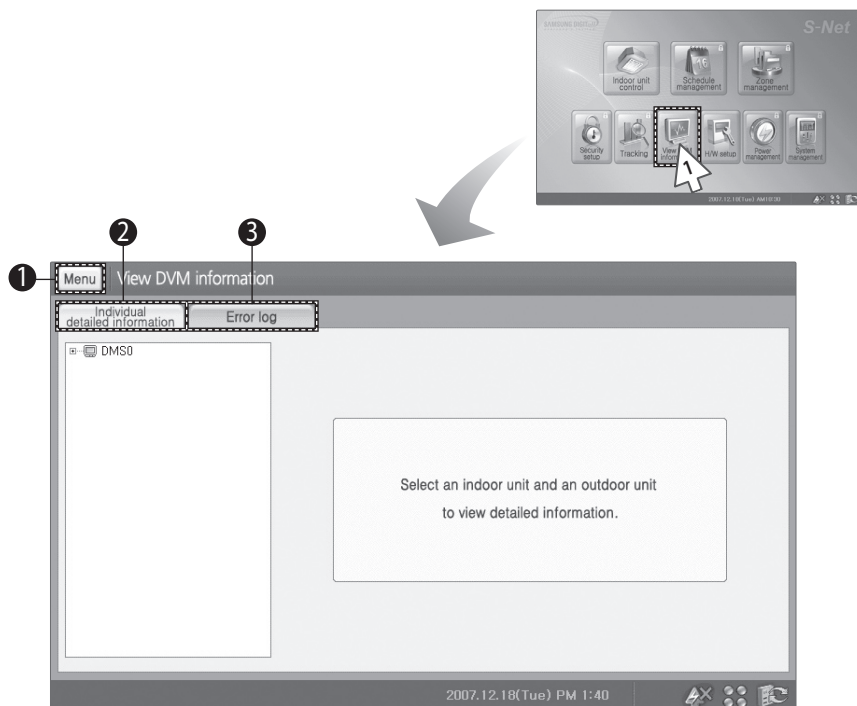
- ◆ System will be configured with new information.
- ◆ To disregard the tracking result, tap [Cancel].

Note

- ◆ **Be aware that when tracking is in progress, some of the information can get missing.**
- ◆ **When the tracking result is incorrect or does not show, check the communication status or communication device selection.**

View DVM Information

View DVM Information



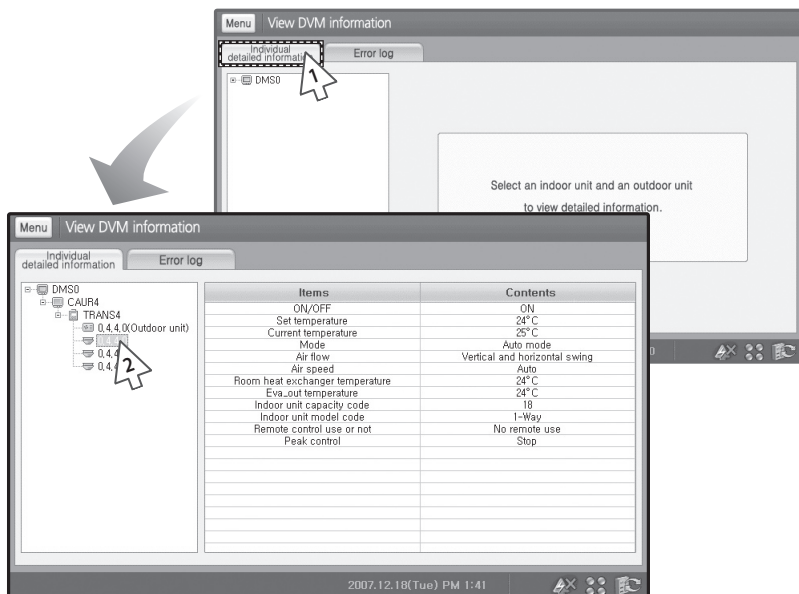
1 Tap [View DVM information] on the main menu.

◆ Check the View DVM information menu.

No.	Remarks
1	Return to main menu
2	Individual detailed information
3	Error log

View Individual Detailed Information

! Tap [View DVM information] on the main menu.



1 Tap [Individual detailed information] tab from the View DVM information menu.

◆ You can select to view Individual detailed information and Error log.

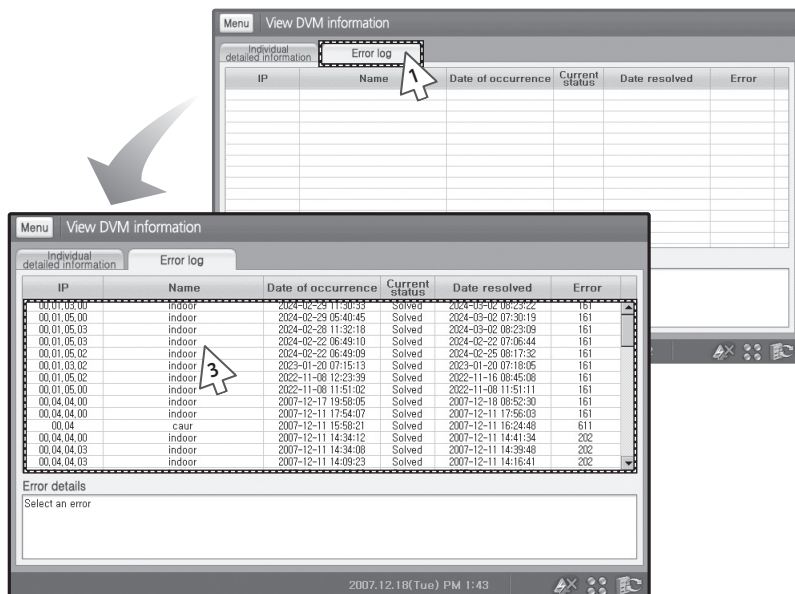
2 Select an indoor unit to be viewed.

◆ You can check items and contents of the indoor unit.

View DVM Information (Continued)

View Error Log

! Tap [View DVM information] on the main menu.



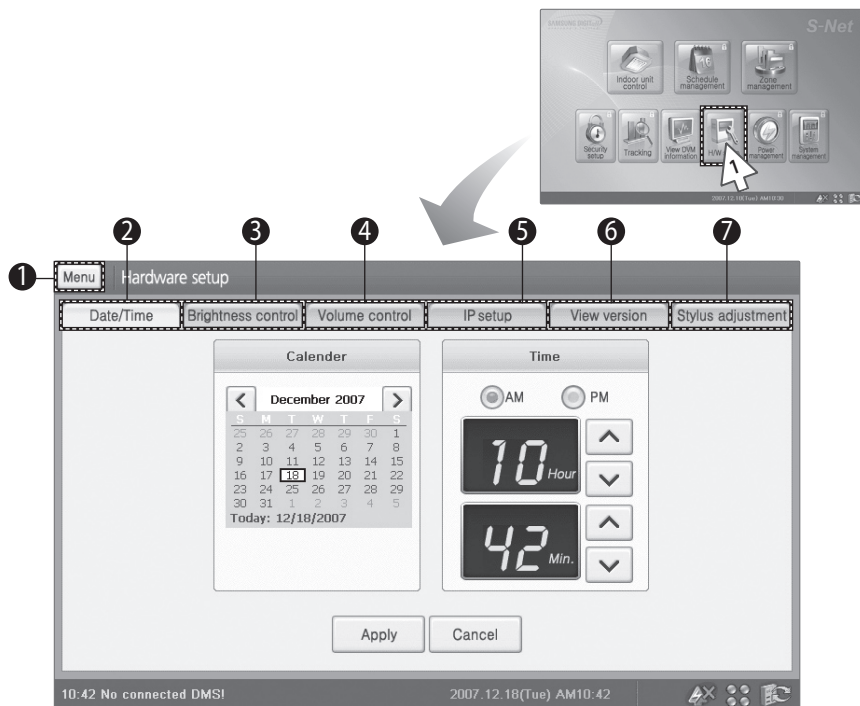
- 1 Tap [Error log] tab from the View DVM information menu.
 - ◆ You can select to view Individual detailed information and Error log.
- 2 Check the error log list.
 - ◆ You can check IP, name, date of occurrence, current status, date items and contents of the indoor unit.
- 3 Select the error log from the list.
 - ◆ You can check the detailed information of the error log.

Note

- ◆ Maximum 256 error logs can be shown on the list.
- ◆ Error log will not be visible if network error occurs or the system tracking is in progress.
- ◆ You cannot check the individual detail information if you have selected 'Group' from tracking mode selection.

H/W Setup

H/W Setup Menu



1 Tap [H/W setup] on the main menu.

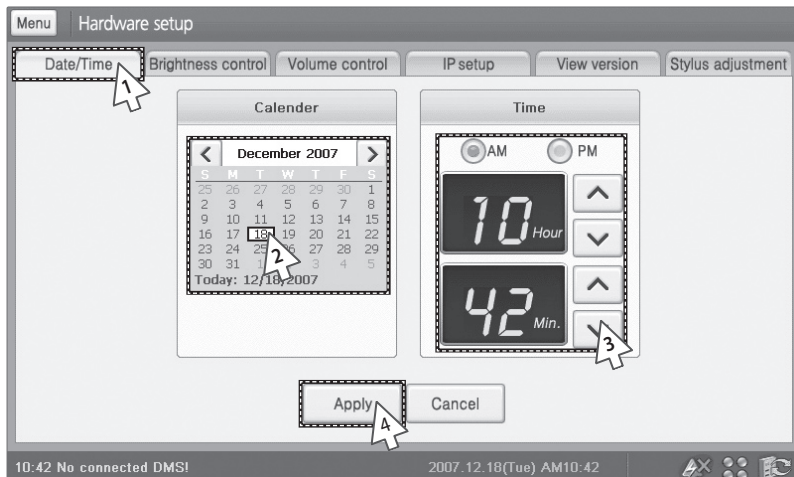
◆ Check the Hardware setup menu.

No.	Remarks
1	Return to main menu
2	Date/Time setup
3	Brightness control
4	Volume control
5	IP setup
6	View version
7	Stylus adjustment

Hardware Setup (Continued)

Date/Time Setup

! Tap [H/W setup] on the main menu.

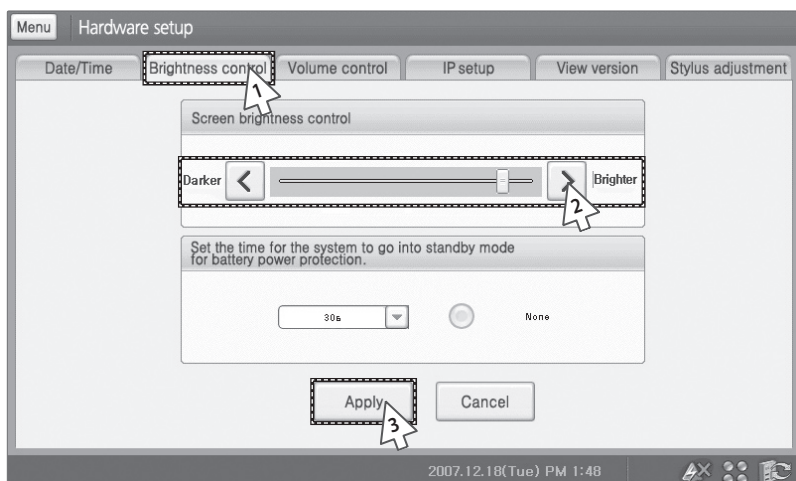


- 1 Tap [Date/Time] tab from the hardware setup menu.
 - ◆ You can select to view Individual detailed information and Error log.
- 2 Tap [<] or [>] to select year/month then select the day.
- 3 Select Am or PM then tap [^] or [v] to set time.
- 4 Tap [Apply].
 - ◆ Selected date/time will be saved.
 - ◆ To cancel date/time setup, tap [Cancel].

Note You can set the date between January 1st, 1980 and December 31st, 2079.

Brightness Control

! Tap [H/W setup] on the main menu.

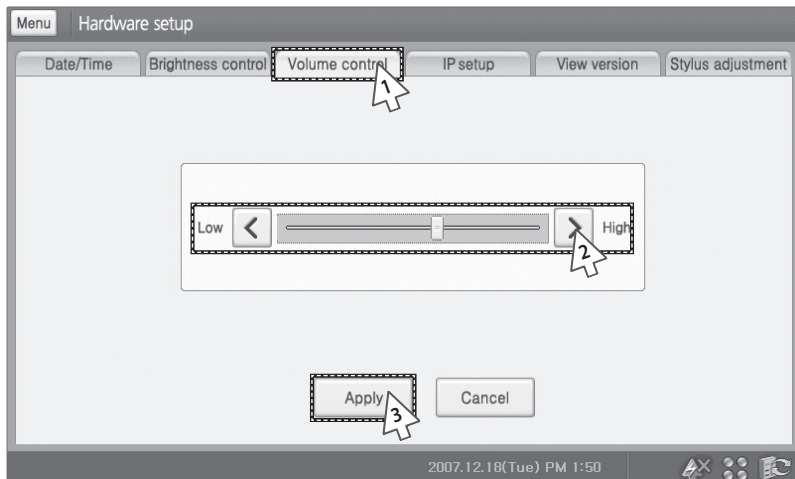


- 1 Tap [Brightness control] tab from the hardware setup menu.
- 2 Tap [<] or [>] to set the screen brightness.
 - ◆ You can also move the scroll left or right to set the brightness.
- 3 Tap [Apply].
 - ◆ Selected brightness will be saved.
 - ◆ To cancel brightness control, tap [Cancel].

Hardware Setup (Continued)

Volume Control

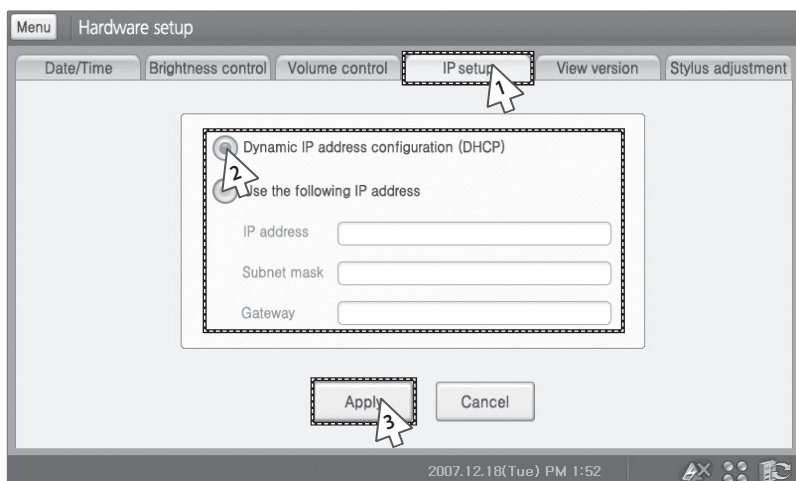
! Tap [H/W setup] on the main menu.



- 1 Tap [Volume control] tab from the hardware setup menu.
- 2 Tap [<] or [>] to set the volume.
 - ◆ You can also move the scroll left or right to set the volume.
- 3 Tap [Apply].
 - ◆ Selected volume will be saved.
 - ◆ To cancel volume control, tap [Cancel].

IP Setup

! Tap [H/W setup] on the main menu.



- 1 Tap [IP setup] tab from the hardware setup menu.
- 2 Select either 'Dynamic IP address configuration (DHCP)' or 'Use the following IP address'.
 - ◆ If you select 'Use the following IP address', you have to enter IP address, Subnet mask and Gateway.
- 3 Tap [Apply].
 - ◆ Selected IP will be saved.
 - ◆ To cancel IP setup, tap [Cancel].

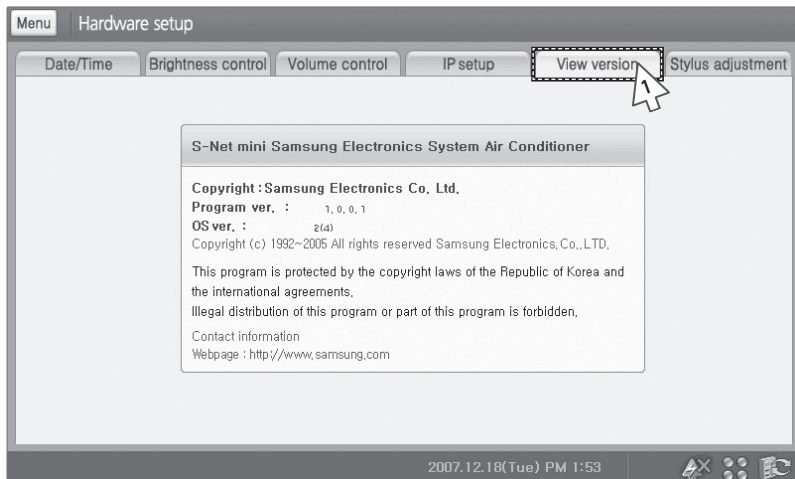
Caution

'Dynamic IP address configuration (DHCP)' can be selected when the DHCP server is connected to the network.

Hardware Setup (Continued)

View Version

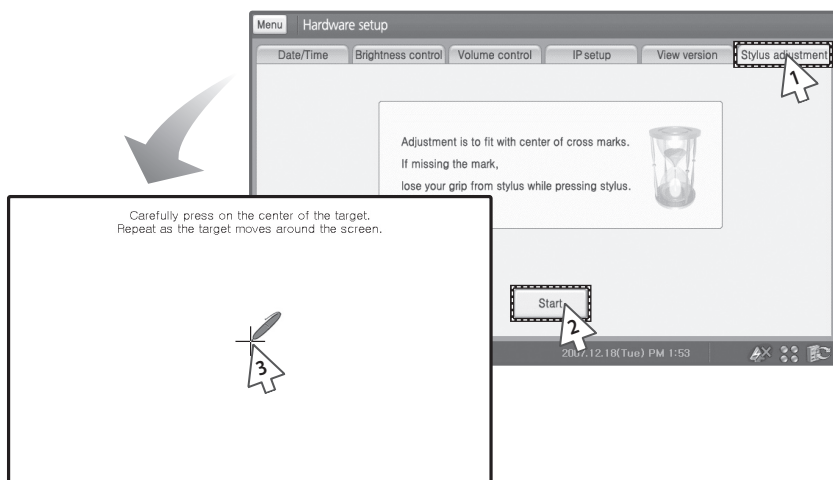
! Tap [H/W setup] on the main menu.



- 1 Tap [View version] tab from the hardware setup menu.
- 2 Check the current version.
 - ◆ You can check the program and OS version.

Stylus Adjustment

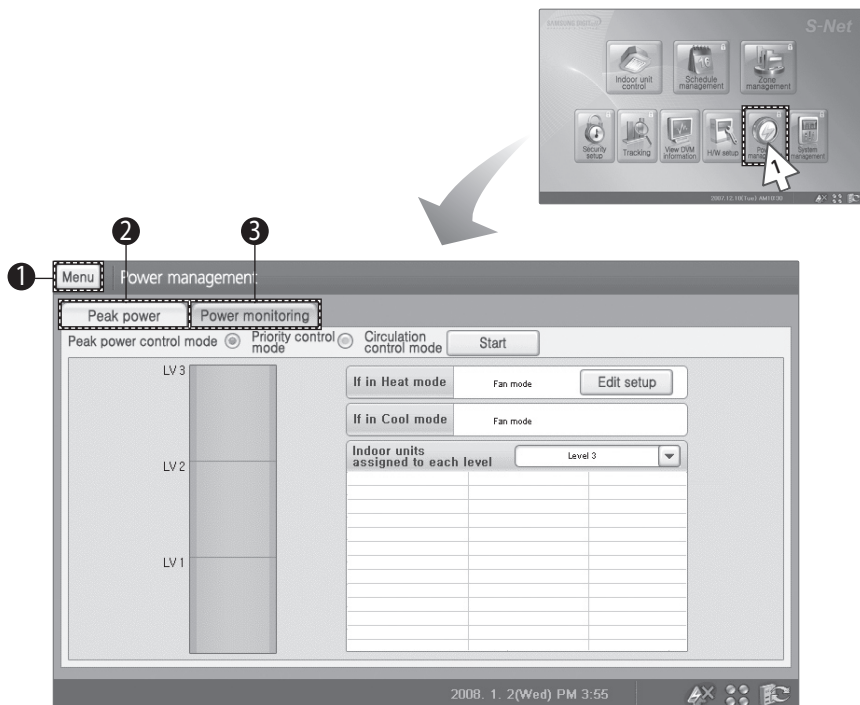
! Tap [H/W setup] on the main menu.



- 1 Tap [Stylus adjustment] tab from the hardware setup menu.
- 2 Tap [Start].
- 3 Use stylus to tap the center of the cross when the stylus adjustment window appears.
 - ◆ You have to follow the cross and repeat this step few times.
 - ◆ To exit stylus adjustment, press **Soft keyboard** button on the hardware and then press [ESC] from the soft keyboard.

Power Management

Power Management Menu



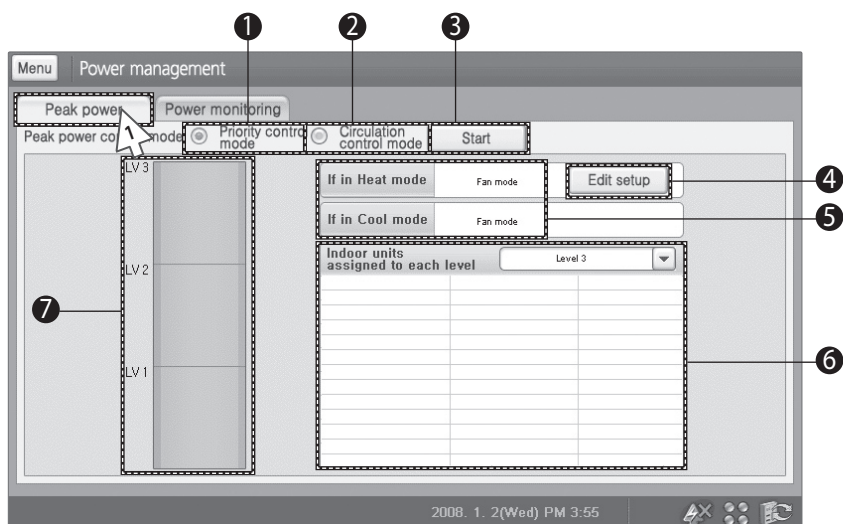
1 Tap [Power management] on the main menu.

◆ Check the Power management menu.

No.	Remarks
1	Return to main menu.
2	Peak power tab.
3	Power monitoring tab.

Priority Control Mode

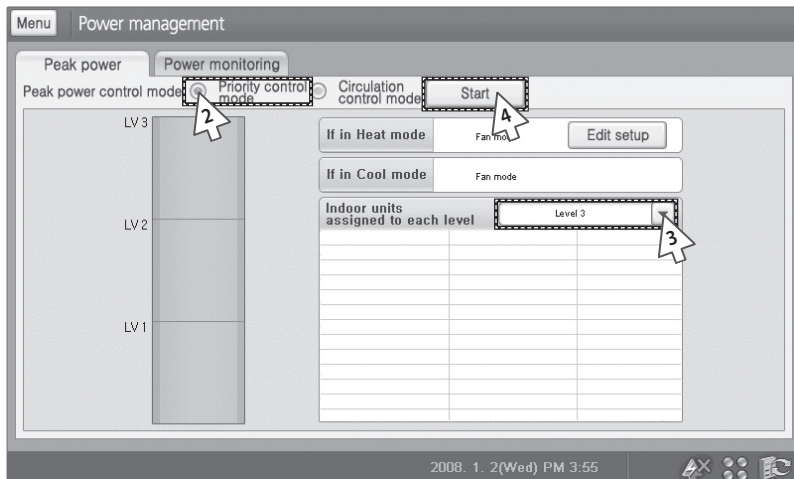
! Tap [Power management] on the main menu.



No.	Remarks
1	Priority control mode
2	Circulation control mode
3	Start/Stop Peak power management
4	Edit setup during peak power management
5	Set operation mode during peak power management
6	List of indoor units assigned to each level
7	Peak level display

1 Tap [Peak power] tab from the Power management menu.

Power Management (Continued)



2 Select 'Priority control mode'.

3 Tap [▼] to view list of indoor units assigned to each level.

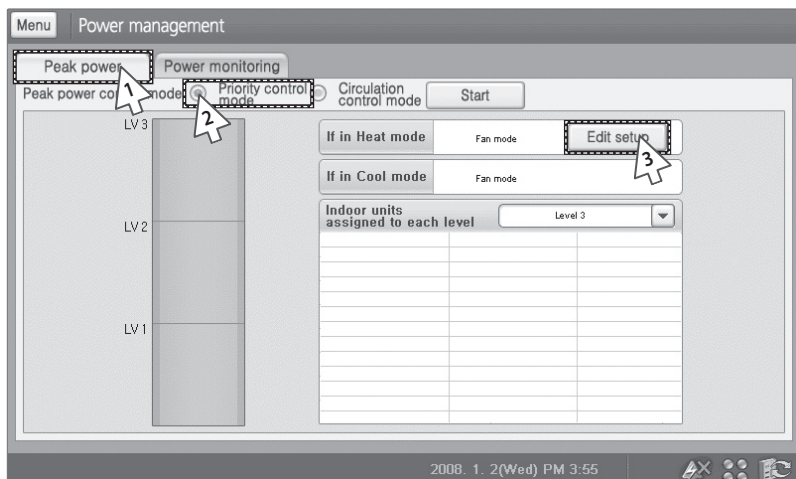
- ◆ If priority control mode is on, level in progress will be shown on the list.
- ◆ You can also check indoor units set as Exception.

4 Tap [Start].

- ◆ Selected priority control mode will start.
- ◆ When you press [Start], it will change to [Stop]
- ◆ Circulation control mode in progress will be suspended and Priority control mode will start.
- ◆ You can check the level on peak level display.

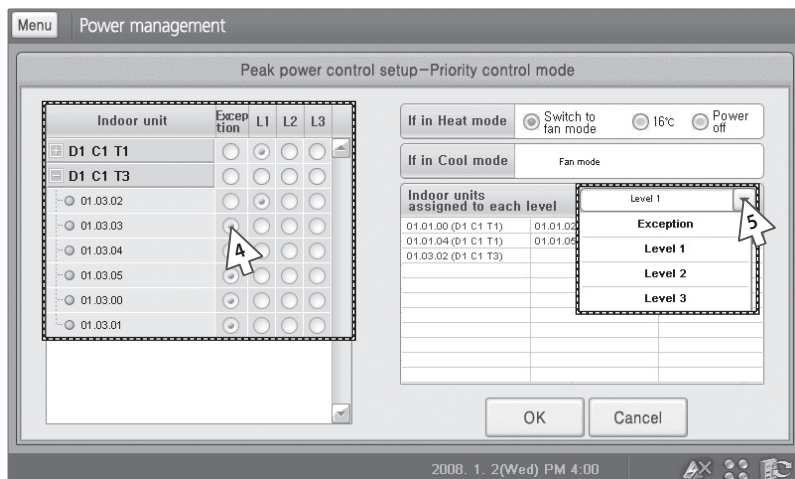
Edit Setup in Priority Control Mode

! Tap [Power management] on the main menu.

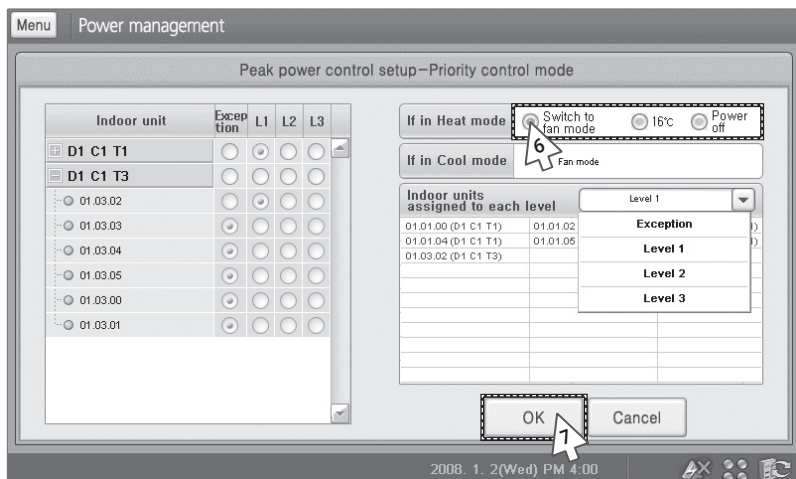


- 1 Tap [Peak power] from the power management menu.
- 2 Select 'Priority control mode'.
- 3 Tap [Edit setup].

Power Management (Continued)



- 4 Select the level of group/indoor units.
 - ◆ Tap [+] to view lists of indoor units within the group.
 - ◆ Tap [-] to hide lists of indoor units and view lists of group only.
 - ◆ You can set the level of indoor units individually or in groups.
 - ◆ If you set the level on group, all the indoor units within a group will have same level.
 - ◆ Default level for each indoor unit is set on 'Exception'.
- 5 Tap [▼] to check the indoor units in selected level.
 - ◆ Indoor units with selected level will appear on the list.
 - ◆ Exception: Not assigned to peak setup.
 - LEVEL 1: Priority level 1
 - LEVEL 2: Priority level 2
 - LEVEL 3: Priority level 3



- 6 Select one of the options from 'If in Heat mode'
 - ◆ You can select from 'Switch to fan mode', '16°C', 'Power off'.
 - ◆ In Cool mode, it will be fixed in Fan mode.

- 7 Tap [OK].
 - ◆ Changed setting will be applied.
 - ◆ To cancel the setup, tap [Cancel].

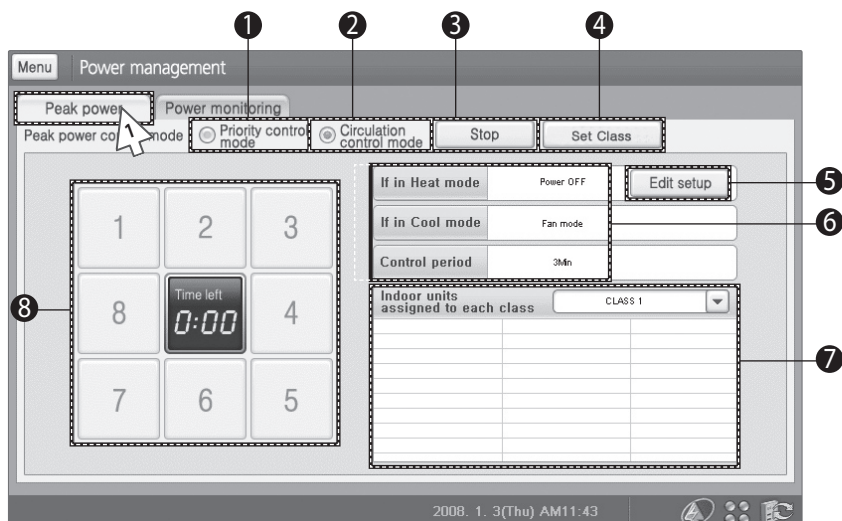
Note ◆ **What is priority control mode?**

- Peak power operation mode that assigns indoor units to Levels 1, 2 and 3 or Exception and operates the respective indoor units when the power level at the peak transmitter reaches anyone of the preset levels.
- To monitor peak power and power, you need at least one designated DMS connected to a peak control transmitter.
- Priority control mode and the circulation control mode cannot be operated simultaneously.

Power Management (Continued)

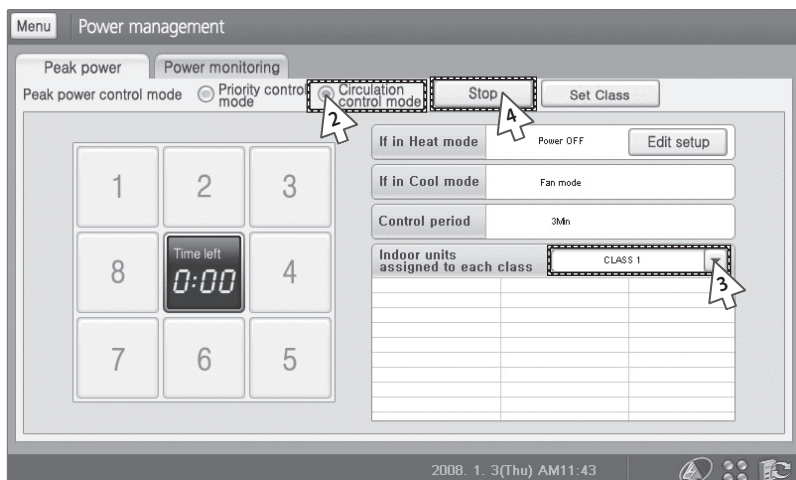
Circulation Control Mode

! Tap [Power management] on the main menu.



No.	Remarks
1	Select Priority control mode
2	Select Circulation control mode
3	Start/Stop Peak power management
4	Set Class
5	Edit setup during peak power management
6	Set operation mode during peak power management
7	List of indoor units assigned to each class
8	Status of each class in Circulation control mode

1 Tap [Peak power] from the Power management menu.

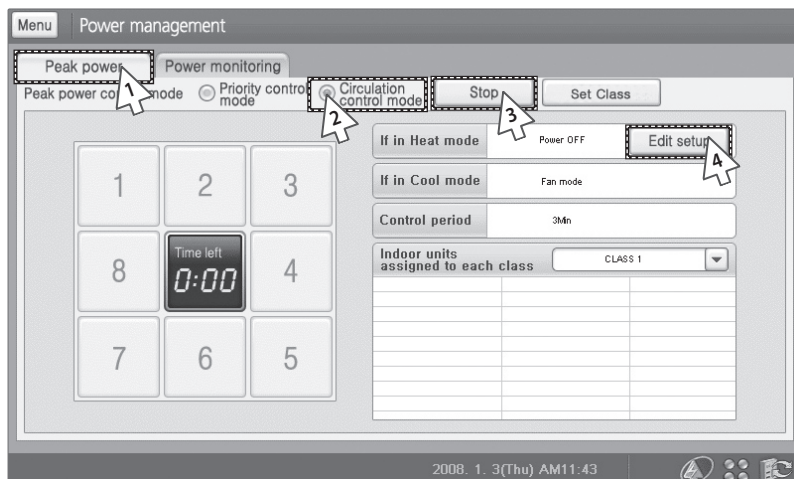


- 2 Select 'Circulation control mode'.
- 3 Tap [▼] to check the indoor units in selected class.
 - ◆ If Circulation control mode is on, class in progress will be shown on the list.
- 4 Tap [Start].
 - ◆ Selected Circulation control mode will start.
 - ◆ When you press [Start], it will change to [Stop].
 - ◆ Priority control mode in progress will be suspended and Circulation control mode will start.

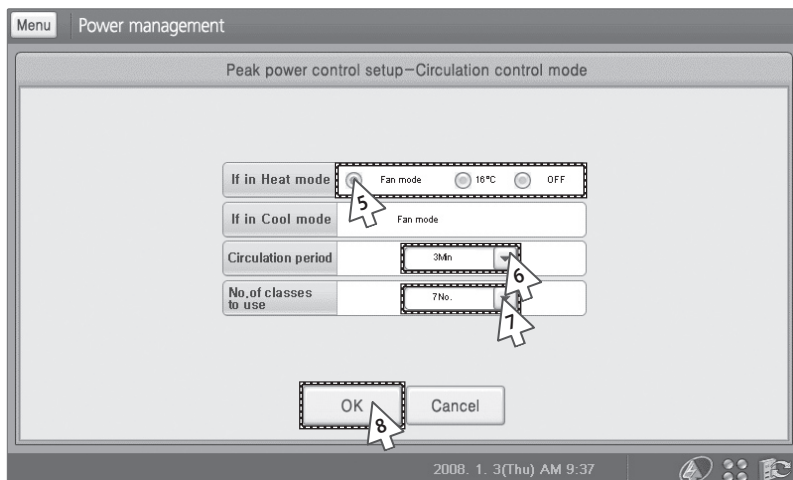
Power Management (Continued)

Edit setup in Circulation Control Mode

! Tap [Power management] on the main menu.



- 1 Tap [PEAK power] tab from the Power management menu.
- 2 Select 'Circulation control mode'
- 3 Tap [Start].
 - ◆ You can change the setting while Circulation control mode is operating.
- 4 Tap [Edit setup].



5 Select one of the options from 'If in Heat mode'.

- ◆ You can select from 'Switch to fan mode', '16°C', 'Power off'.
- ◆ In Cool mode, it will be fixed in Fan mode.

6 Tap [▼] to select circulation period.

- ◆ You can choose from 3Min to 10 Min.
- ◆ Circulation period sets the operation time between each class.

7 Tap [▼] to select No. of classes to use.

- ◆ You can select from 2 to 8 classes.
- ◆ If you change the number of the classes to use, previous class setting will change to default.

8 Tap [OK].

- ◆ Changed setting will be applied.
- ◆ To cancel the setup, tap [Cancel].

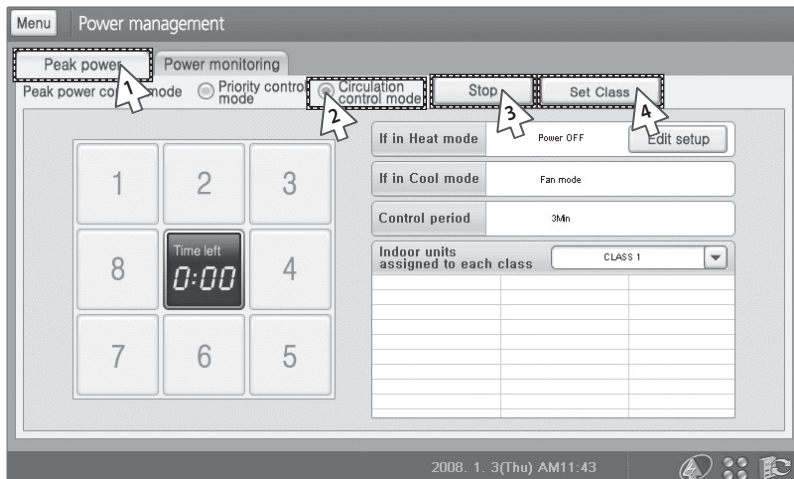
Note

- ◆ To exclude from Circulation control mode, you have to check on 'Exception' from [Set class] menu.
- ◆ To monitor peak power and power, you need at least one designated DMS connected to a peak control transmitter.
- ◆ Priority control mode and the circulation control mode cannot be operated simultaneously.

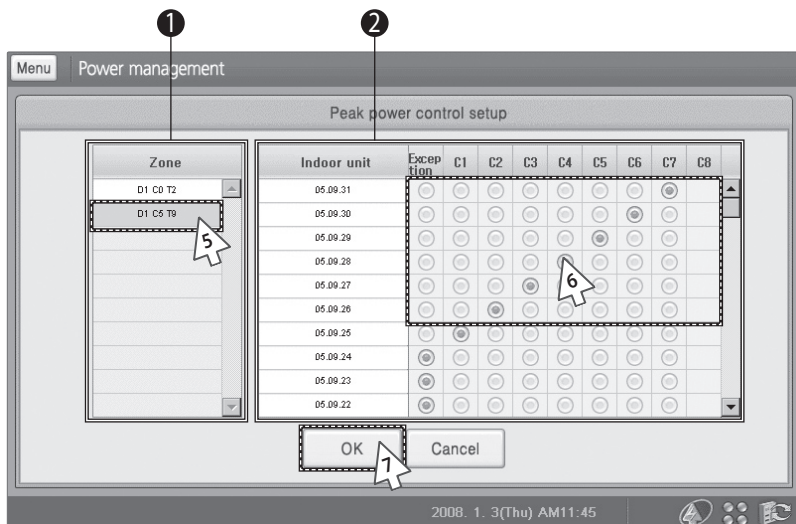
Power Management (Continued)

Set Class in Circulation Control Mode

! Tap [Power management] on the main menu.



- 1 Tap [PEAK power] tab from the Power management menu.
- 2 Select 'Circulation control mode'
- 3 Tap [Start].
 - ◆ You can change the setting while Circulation control mode is operating.
- 4 Tap [Set Class].



No.	Remarks
1	Zone list
2	Class of indoor units in a zone

5 Select a Zone to be changed from the zone list.

6 Select a class you want to change.

- ◆ You can change the number of class from [Edit setup].
- ◆ If you wish to not include a indoor unit, select 'Exception'

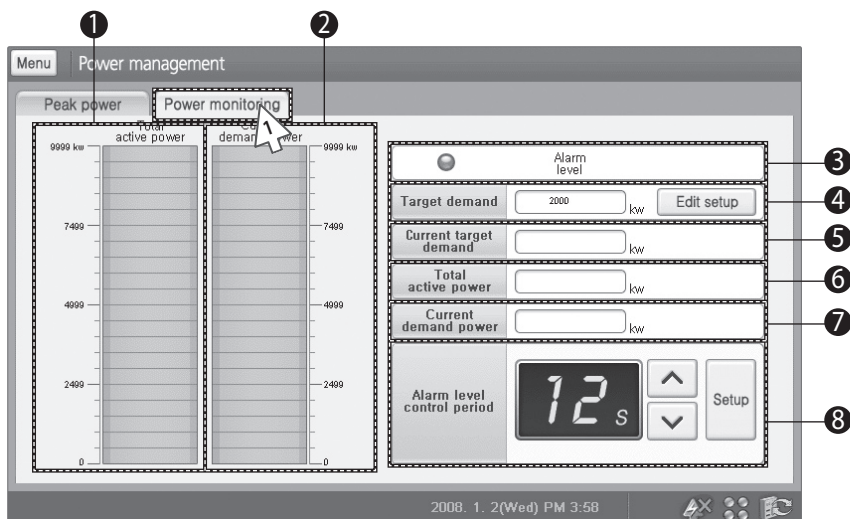
7 Tap [OK].

- ◆ Changed setting will be applied.
- ◆ To cancel setup, tap [Cancel].

Power Management (Continued)

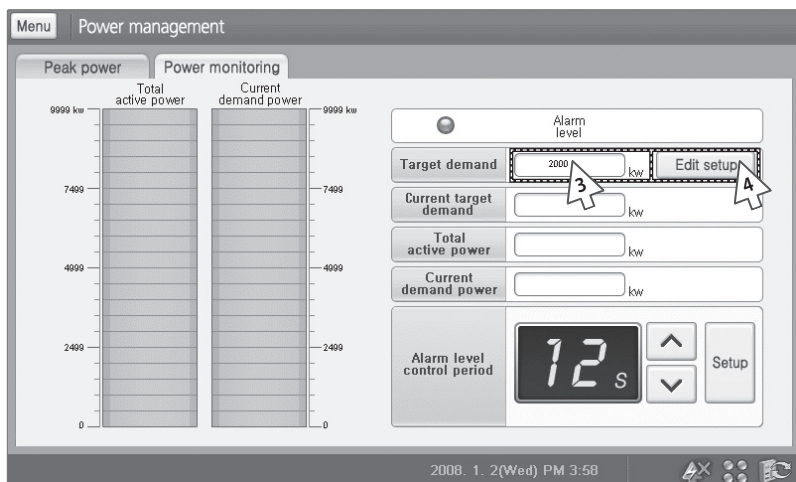
Power Monitoring

! Tap [Power management] on the main menu.



No.	Remarks	
1	Total active power display	
2	Current demand power	
3	Power status window	Alarm level display
4		Target demand setting
5		Current target demand
6		Total active power
7		Current demand power
8	Alarm level control period setting	

- 1 Tap [Power monitoring] from the Power management menu.



2 Check the power on the power status window.

- ◆ You can check the alarm level (0~3), Current target demand, Total active power and Current demand power.

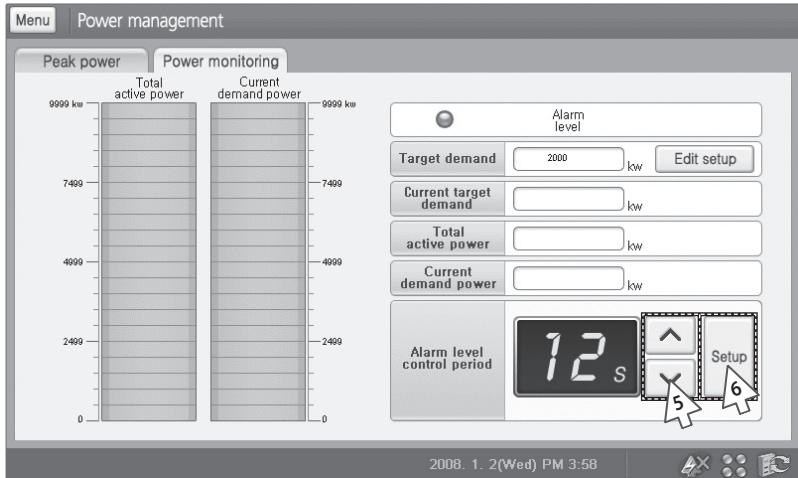
3 Enter current target demand.

- ◆ Tap 'Target demand' entry window.
- ◆ You may use soft keyboard to enter target demand. (See pages 100~101)

4 Tap [Edit setup].

- ◆ You need to tap [Edit setup] to save changed target demand.

Power Management (Continued)



- 5 Tap [A] or [V] to change the Alarm level control period.
 - ◆ Changes in Total active power and Current demand power will be displayed in basis of target demand.
 - ◆ If Total active power or Current demands power is larger than Target demand, Alarm level will turn red.
 - ◆ Alarm level control period is between 12~59 seconds.

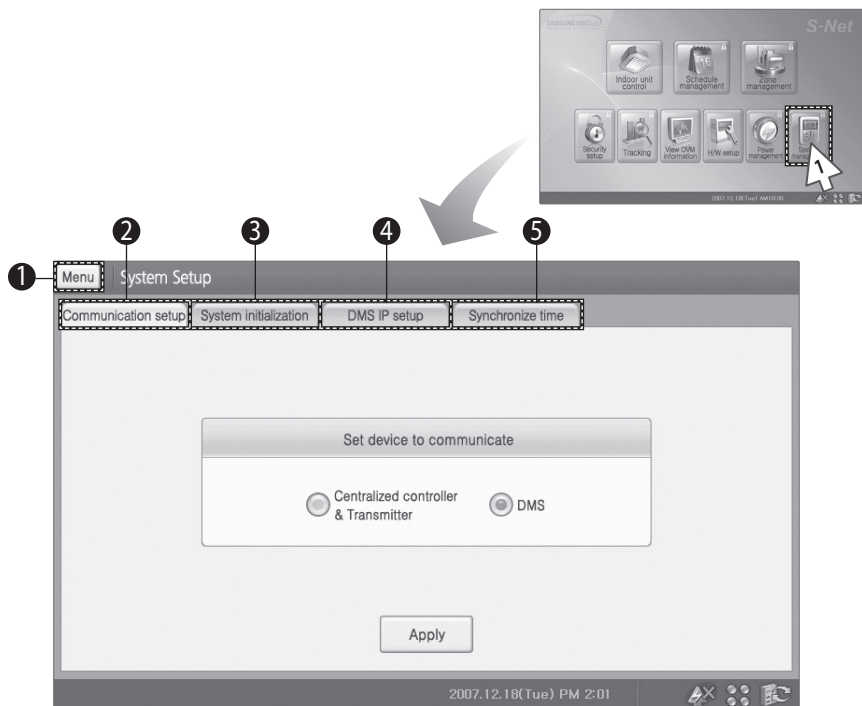
6 Tap [Setup]

Note

- ◆ **Target Demand:** This is the maximum amount of power set by user.
- ◆ **Current Target Power Demand:** This is the amount of power left before reaching the Target Demand.
- ◆ **Total Active Power:** This is current power usage in kW unit.
- ◆ **Current Demand Power:** This is the accumulated demand power from starting period.
- ◆ **Power monitoring:** Function which monitors current power and the maximum power.
- ◆ **To monitor peak power and power,** you need at least one designated DMS connected to a peak control transmitter.

System Management

System Management Menu



1 Tap [System management] on the main menu.

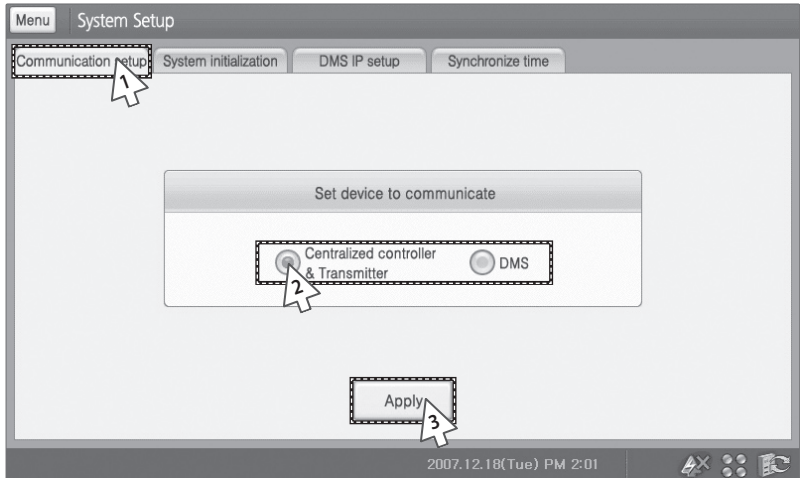
◆ Check the System setup menu.

No.	Remarks
1	Return to main menu
2	Communication setup
3	System initialization
4	DMS IP setup
5	Synchronize time

System Management (Continued)

Communication Setup

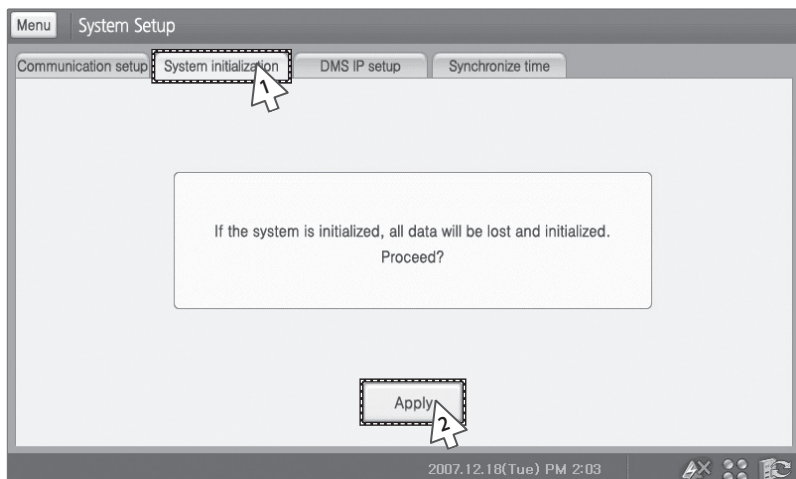
! Tap [System management] on the main menu



- 1 Tap [Communication] setup tab from the System setup menu.
- 2 Select either 'Centralized controller & Transmitter' or 'DMS'.
- 3 Tap [Apply].
 - ◆ Selected device will be applied and S-NET mini will restart.
 - ◆ To cancel communication setup, select other tab or tap [Menu] to return to main menu.

System Initialization

! Tap [System management] on the main menu.



1 Tap [System initialization] tab from the System setup menu.

2 Tap [Apply].

- ◆ System will be initialized and S-NET mini will restart.
- ◆ To cancel system initialization, select other tab or tap [Menu] to return to main menu.

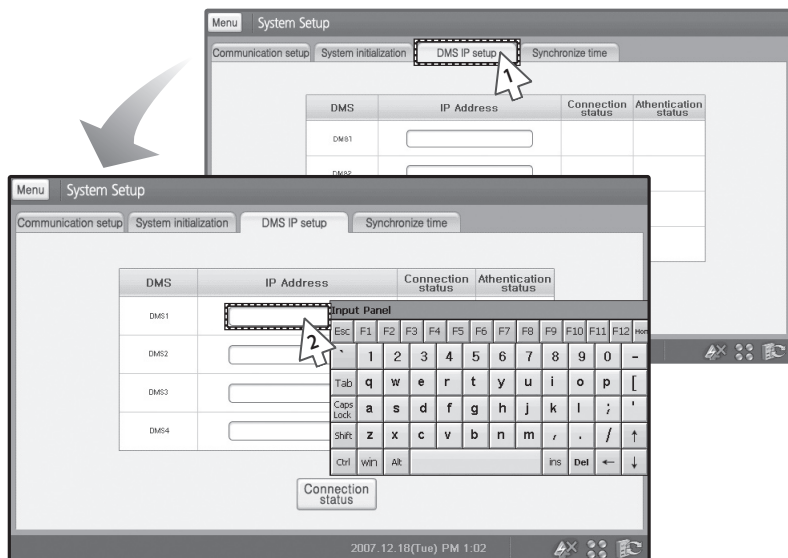
Note

- ◆ You need to select a communication device when system restarts.
- ◆ For more detailed information, refer to 'Getting Started' (See pages 14~17)

System Management (Continued)

DMS IP Setup

! Tap [System management] on the main menu.



1 Tap [DMS IP setup] tab from the System setup menu.

2 Enter DMS IP and tap [Connection status].

- ◆ You can check the detailed information of the error log.
- ◆ To cancel DMS IP setup, select other tab or tap [Menu] to return to main menu.
- ◆ You may use soft keyboard to enter DMS IP.
(See pages 100~101)

Menu
System Setup

Communication setup
System initialization
DMS IP setup
Synchronize time

DMS	IP Address	Connection status	Authentication status
DM81	169.219.197.225	0	X
DM82			
DM83			
DM84			

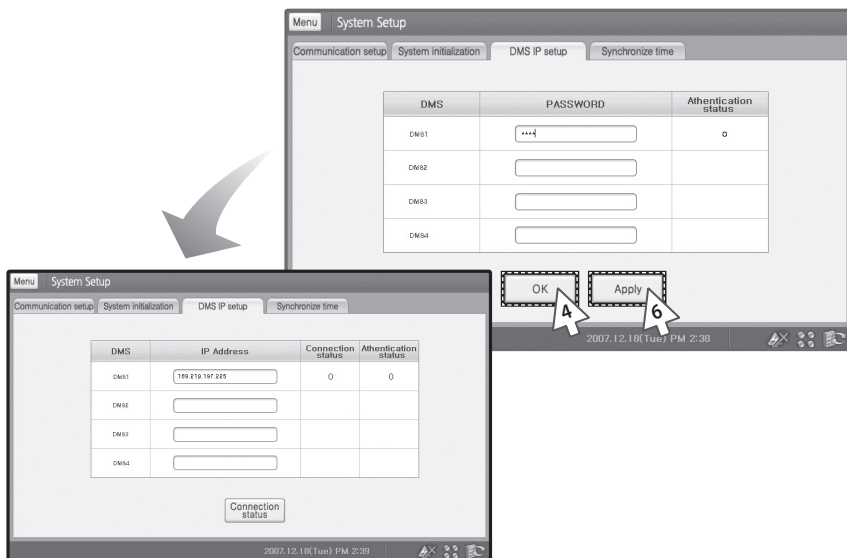
Connection status

14:36 No connected DMS!
2007.12.18(Tue) PM 2:36

3 Check the DMS connection status.

- ◆ If communication status shows 'X' sign;
 - Connection may be abnormal. Check the DMS IP and re-enter it.
 - S-NET mini IP setup may be incorrect. Re-set the S-NET mini IP.
- ◆ If communication with DMS is normal, authentication window will appear automatically.

System Management (Continued)

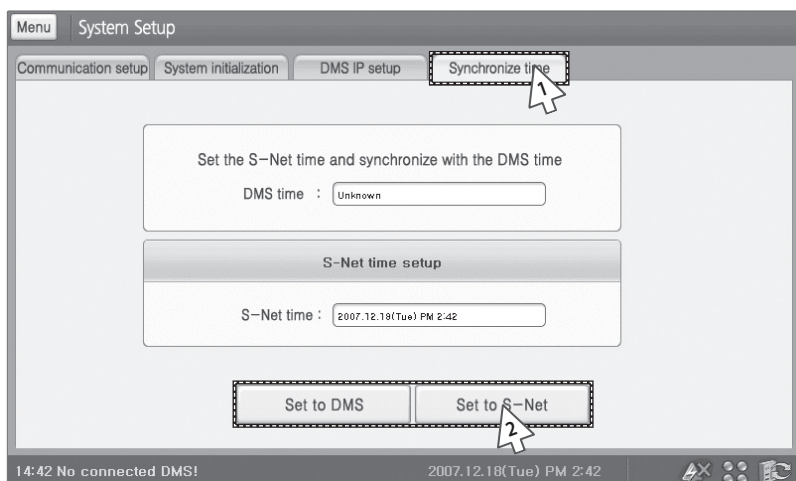


- 4 From the DMS authentication window, enter a password and tap [OK].
 - ◆ To cancel DMS authentication password, tap [Apply] to return to DMS IP setup window.
 - ◆ You may use soft keyboard to enter DMS authentication password. (See pages 100~101)
- 5 Check the authentication status.
 - ◆ If authentication password is incorrect, authentication status will show 'X' sign.
Check the password and re-enter the password.
- 6 Tap [Apply].
 - ◆ DMS IP connection and authentication will be done.

Note Consult DMS manager from DMS authentication password.

Synchronize Time

! Tap [System management] on the main menu.



1 Tap [Synchronize time] tab from the System setup menu.

2 Tap [Set to DMS] or [Set to S-Net].

- ◆ If DMS is not connected, DMS time will not display.
- ◆ To cancel synchronize time, select other tab or tap [Menu] to return to main menu.
- ◆ To synchronize time with DMS, you must set DMS IP first. (See pages 96~98)

Using Soft Keyboard

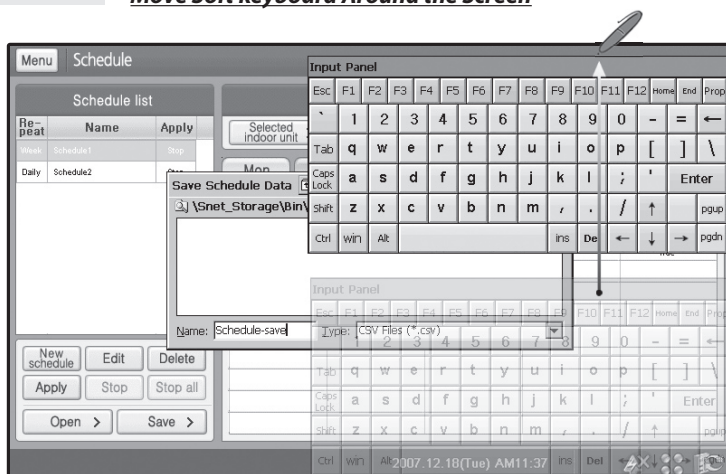
Open Soft Keyboard

- ◆ You will need Soft keyboard to input number or text.
- ◆ Press **Soft keyboard** button located on side of the screen.

Close Soft Keyboard

- ◆ Press **Soft keyboard** button located on side of the screen.

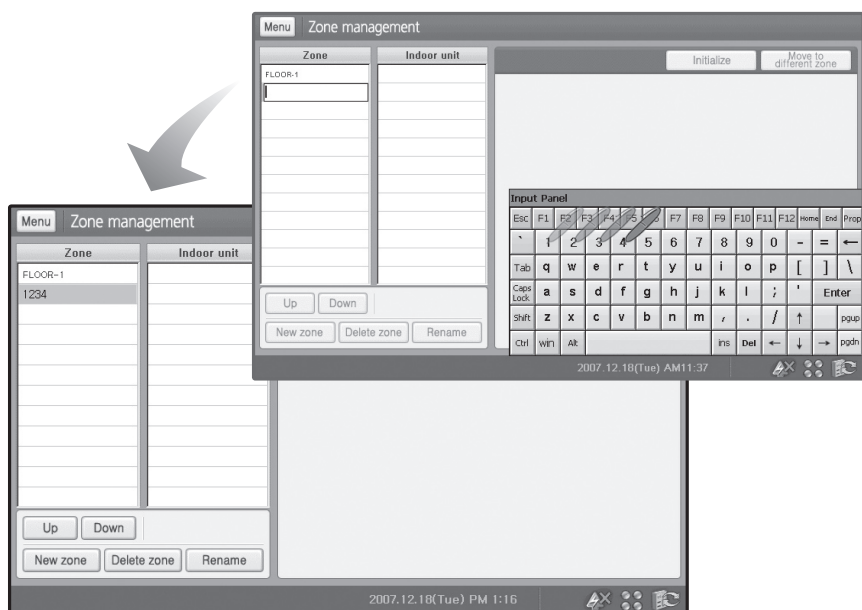
Move Soft keyboard Around the Screen



- 1 Tap and hold the bar and move the soft keyboard.
 - ◆ If soft keyboard blocks the screen, you can move it around the screen, and then enter the text.

Enter Text/Number

- 1 Tap the letter or number by using stylus.
 - ◆ **Caps Lock:** To enter upper case letters or symbols
 - ◆ **Ins:** Insert letters.
 - ◆ **Del:** Delete letters.
 - ◆ Other keys work same as ordinary keyboard.



Trouble Shooting

<u>Problem</u>	<u>Check</u>	<u>Explanation/Solution</u>
DMS is not connected	Is the DMS turned on?	DMS always has to be turned on. Check the DMS is turned on, and connect the DMS again.
	Have you set DMS as your communication device?	Refer to [System setup] → [Communication setup] and make sure you have set correct communication device.
	Did you correctly set the IP for S-NET mini and the DMS?	Refer to [H/W setup] → [IP setup] and check the IP for S-NET mini.
		Refer to [System setup] → [DMS IP setup] and check the IP for DMS
	Is the LAN connected to the DMS correctly?	Check the LAN is connected to the DMS correctly. It is impossible to connect the DMS to S-NET mini without LAN. Consult a person in charge of network for further information.
	Doesn't the DMS have any defect?	Check the status of the DMS.
	Did you set the correct IP for S-NET mini and the DMS?	Refer to [System setup] → [IP Setup] to check the S-NET mini IP. (Make sure IP is correct and not repeated)
		Refer to [H/W setup] → [DMS IP Setup] to check the DMS IP (Make sure IP is correct and not repeated)
	Is your network status normal?	Check if your network status is normal. Consult a person in charge of network for further information.

<u>Problem</u>	<u>Check</u>	<u>Explanation/Solution</u>
The information of indoor units/ERVs is not displayed.	Has the tracking been successfully executed?	Tracking should be executed to get the information of all devices belonging to DMS.
	Is the DMS connected to the centralized controller correctly?	Check the communication cable between the DMS and the centralized controller. Be careful to deal with the communication cable because it has polarity. Check the centralized controller is turned on.
	Is the centralized controller connected to the interface module correctly?	Check the power/communication cable between the centralized controller and the interface module.
Indoor units are out of control.	Is LAN cable properly connected?	Check the LAN cable and the LAN indicator.
	Are the indoor units connected to the DMS correctly?	Check the power/RS 485 communication cable.
	Is PEAK power management mode in operation?	In PEAK power management mode, 'Turning on the indoor unit' or 'Changing operation mode to Cool/Auto/Dry' will be restricted.
Peak power control is out of order.	Does the DMS communication have any problem?	Check the DMS communicates with the interface module. It is impossible to control peak power if the DMS does not function properly.
	Did you assign the indoor unit in a group before PEAK power management alarm level has turned on?	If you have not assigned the indoor unit in a group, indoor unit will not be included in PEAK power management even the alarm level has turned on.

Trouble Shooting (Continued)

<u>Problem</u>	<u>Check</u>	<u>Explanation/Solution</u>
Common exception days are not applied.	Wasn't the schedule made before the common exception days are set?	Any changes to common exception days do not affect previously created schedule. To apply the common exception days, edit the schedule using
Schedules are not edited.	Isn't there any disconnected DMS among all of the connected DMS?	To edit schedules, DMS should be connected to S-NET mini. If it does not, it is possible to view schedule only.
Temperature does not change.	Isn't the temperature set as Lower temperature or Upper temperature in cooling/heating mode?	If lower temperature or upper temperature is set, set temperature is restricted.
S-NET mini display is frozen.	Check if you can control the function.	S-NET mini program is down. Press the Reset button on the side of the product.
S-NET mini display is not working.	Is the screensaver (backlight off) on?	Press any button or tap anywhere on the LCD.
Schedule is not operating at desired time.	Did you synchronize the time for S-NET mini with DMS?	Set the correct time on S-NET mini and synchronize time with DMS.
	Is PEAK power management mode in operation?	In PEAK power management mode, 'Turning on the indoor unit' or 'Changing operation mode to Cool/Auto/Dry' within the schedule and all the other events will be ignored.
Sound is not working.	Did you check the volume control to make sure it is not in 'Low'?	Refer to [H/W Setup] → [Volume control] to check and adjust the volume.
Remote controller is out of control	Did you disable wired/wireless remote control?	Refer to [Indoor Unit Control] to enable wired/wireless remote control.

IP Terminology

S-NET mini needs IP address to contact other computers.



Public IP

Ordinary IP used to connect internet is called public IP.

- Static IP : Static IP is a number that is assigned to a computer by an Internet service provider (ISP) to be its permanent address on the Internet.
- Dynamic IP: Dynamic IP is a number, which changes every time when computer or model has restarted.

Private IP

This is a local IP which can not be used for internet connection. If you share internet connection through router, internet sharing software or, through OS, you may check the Client IP and they will be similar to below number system.

10.X.X.X, 172.X.X.X, 192.168.X.X

- Static IP: Designated IP assigned by user.
- Dynamic IP: User sets up to obtain their IP automatically.

[illegible]

